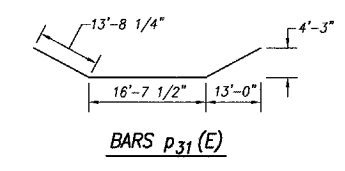
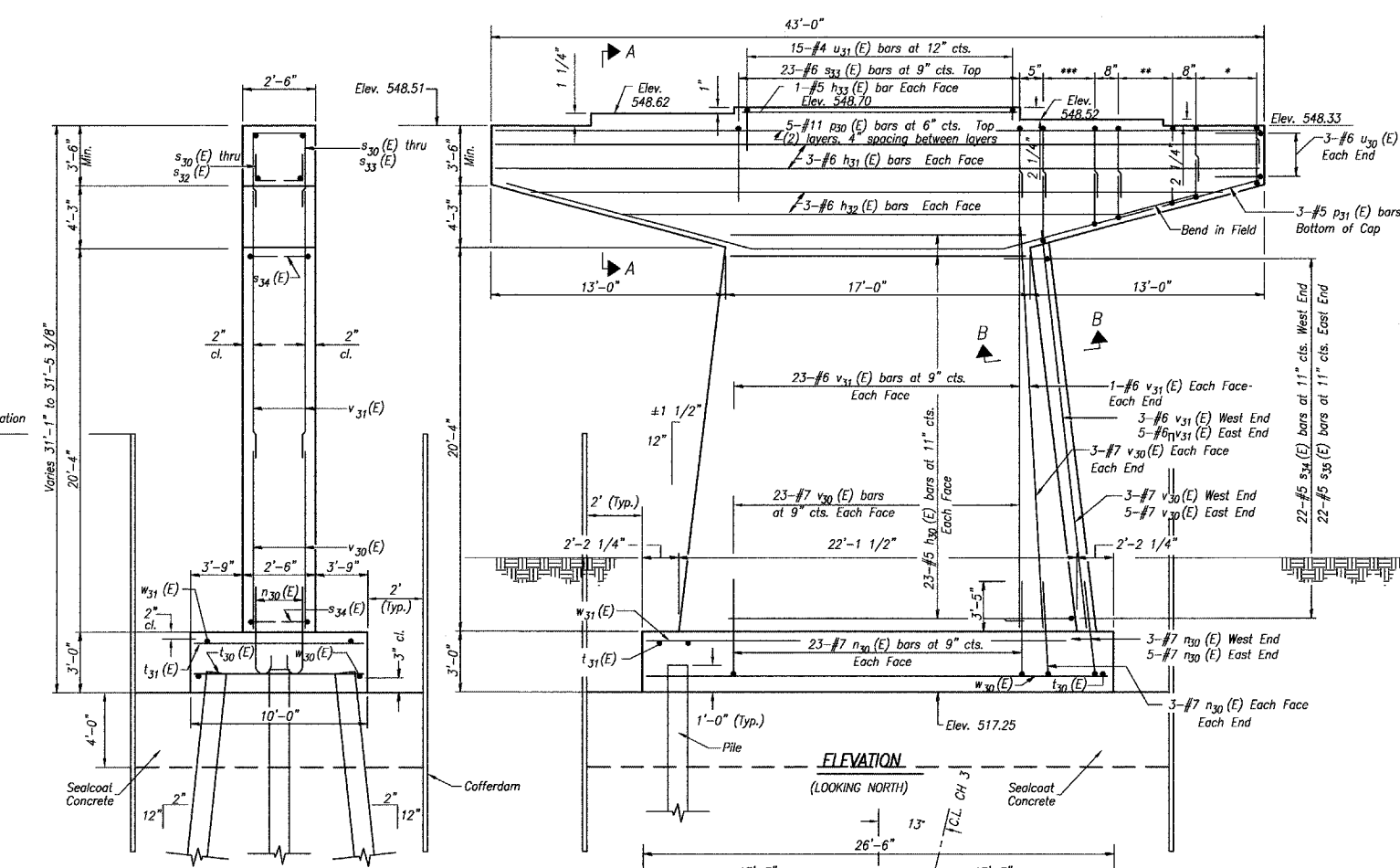
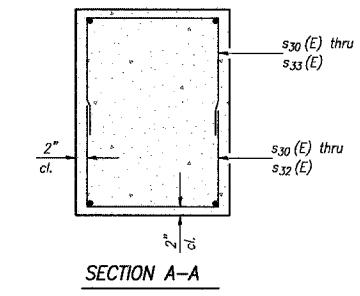
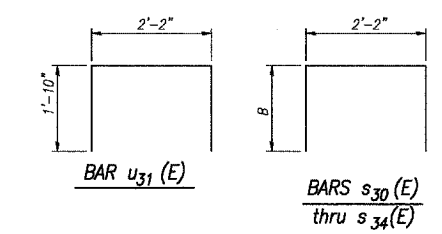


Space reinforcement in cap to miss anchor bolts.  
 Pour steps monolithically with cap.  
 Sealcoat thickness shown is based on water elevation of 538.08.  
 Final design and dimensions of cofferdams are contractor's responsibility.



\* 6-#6 s30 (E) bars at 8" cts. Top and Bottom, Each End  
 \*\* 7-#6 s31 (E) bars at 8" cts. Top and Bottom, Each End  
 \*\*\* 7-#6 s32 (E) bars at 8" cts. Top and Bottom, Each End



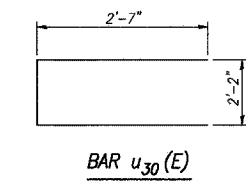
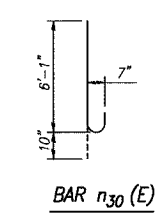
**BILL OF MATERIAL**

Bar	No.	Size	Length	Shape
n30 (E)	46	#5	16'-8"	
n31 (E)	6	#6	42'-8"	
n32 (E)	6	#6	39'-3"	
n33 (E)	2	#5	15'-0"	
n34 (E)	66	#7	6'-11"	
p30 (E)	10	#11	42'-8"	
p31 (E)	3	#6	44'-0"	
s30 (E)	24	#6	8'-6"	
s31 (E)	28	#6	10'-2"	
s32 (E)	28	#6	11'-10"	
s33 (E)	23	#6	17'-8"	
s34 (E)	22	#5	11'-4"	
s35 (E)	22	#5	12'-2"	
t30 (E)	36	#7	9'-8"	
t31 (E)	19	#5	9'-8"	
u30 (E)	6	#6	7'-4"	
u31 (E)	15	#4	5'-10"	
v30 (E)	66	#7	12'-10"	
v31 (E)	58	#6	12'-10"	
w30 (E)	10	#6	26'-2"	
w31 (E)	8	#5	26'-2"	
Cofferdam Excavation		Cu. Yd.	231.1	
Cofferdam (Pier 3)		Each	1	
Concrete Structures		Cu. Yd.	93.4	
Sealcoat Concrete		Cu. Yd.	63.3	
Reinforcement Bars, Epoxy Coated		Pound	11840	
Furnishing Steel Piles HP 12x53		Foot	240	
Driving Steel Piles		Foot	240	
Test Pile HP 12x53		Each	2	
Metal Shoes		Each	16	

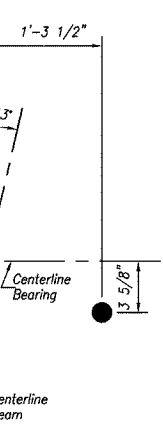
**B DIMENSIONS**

Bar	B
s30 (E)	3'-2"
s31 (E)	4'-0"
s32 (E)	4'-10"
s33 (E)	7'-9"
s34 (E)	4'-7"

**BARS s30 (E) thru s34 (E)**

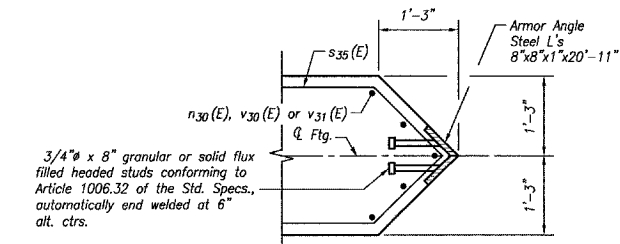
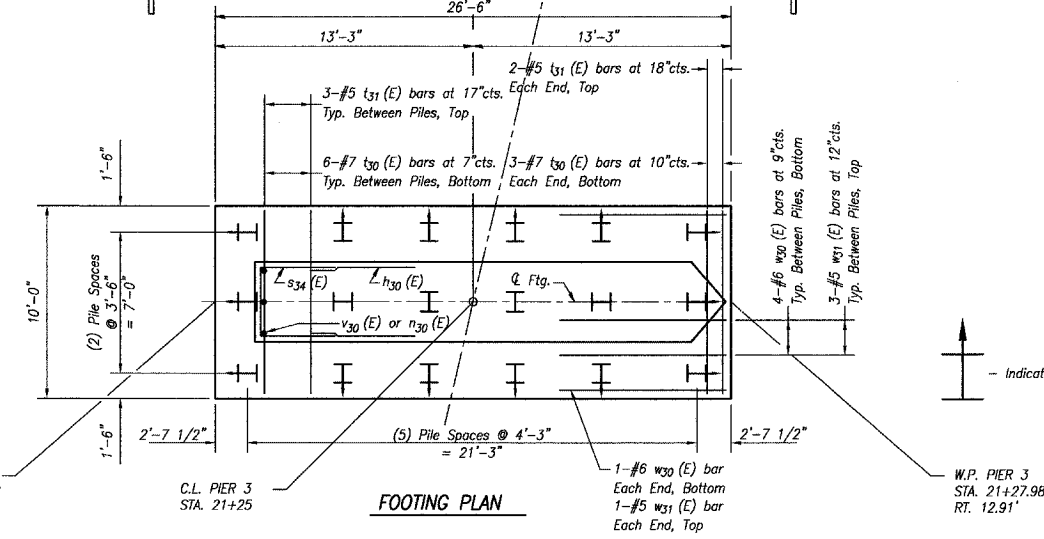


Top of cofferdam design elevation 538.08



**PILE DATA**

Type: Steel HP 12x53  
 Required Bearing: Refusal  
 Est. Length: 15'  
 No. Req'd: 16 plus two test piles



Place Armor Angle on upstream end of pier only.  
 Maintain a minimum 2" clearance between armor angle and reinforcement.  
 The Armor Angle shall be galvanized in accordance with AASHTO M-111 and ASTM A-385.  
 Cost of Armor Angle shall be included in Furnishing and Erecting Structural Steel.

PIER 3 DETAILS  
 FAS 259 C.H. 3  
 OVER FOX RIVER  
 LA SALLE COUNTY  
 STA. 20+15.00  
 STRUCTURE NO. 050-3562

DRAWN BY: CHAMS	CAD: PIER1	REVISIONS		SCALE: AS NOTED	SHEET 51
		DATE	BY		
CHECKED BY: JKC	DATE: 02/03	3/08/04	NET	FILE NO.: 11174.01Y-1	OF 79