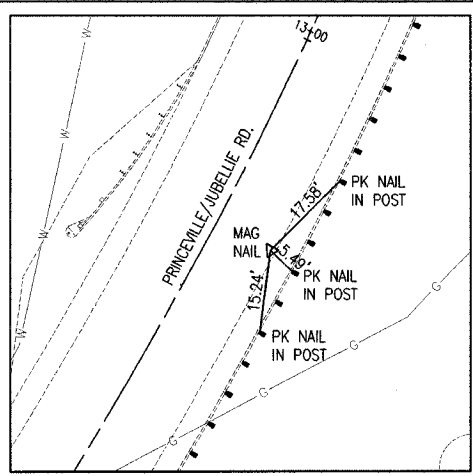
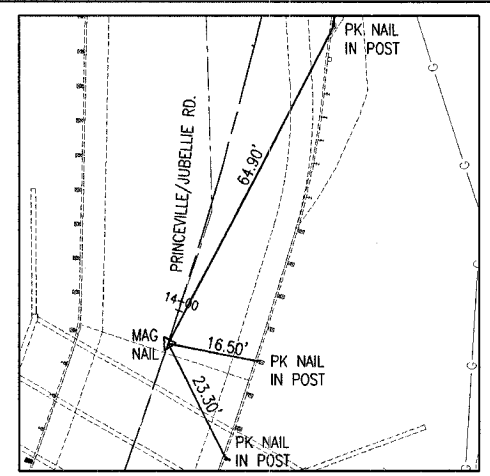


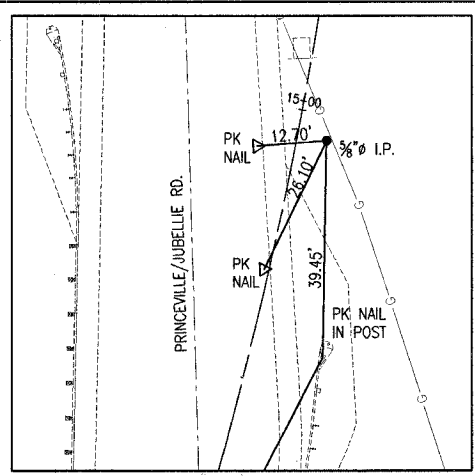
F.A.U. RTE. NO.	SECTION	COUNTY
FAS 383	00-00053-04-FP	PEORIA
STA.	TO STA.	
FED. RD. DIST. NO. 7	ILLINOIS PROJECT	RS-0143(36)
CONTRACT NO. 89360		



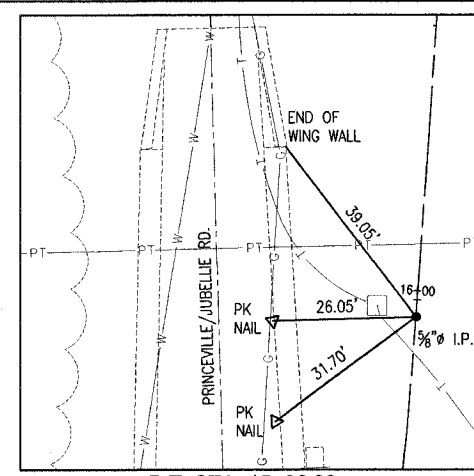
P.I. STA. 12+64.35
MAG NAIL



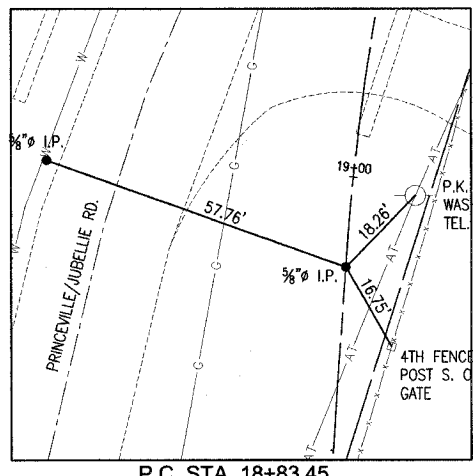
P.C.C. STA. 13+93.74
MAG NAIL



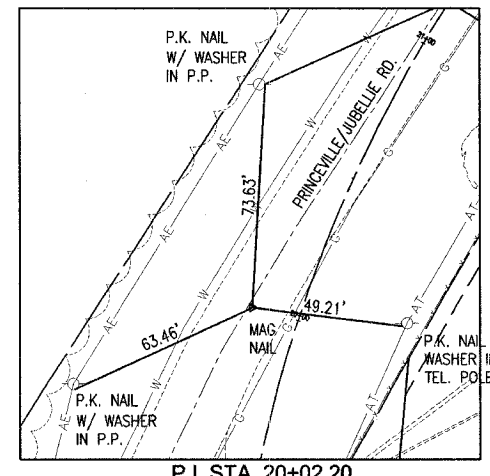
P.I. STA. 14+95.86
% I.P.



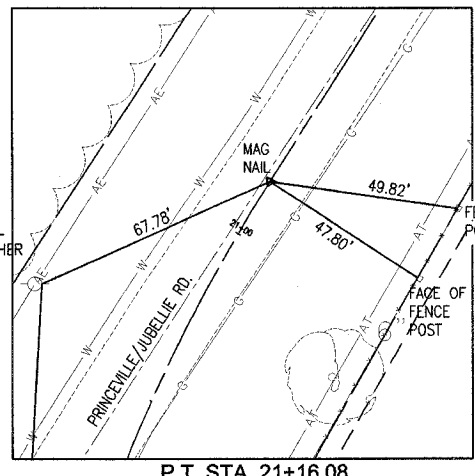
P.T. STA. 15+96.93
% I.P.



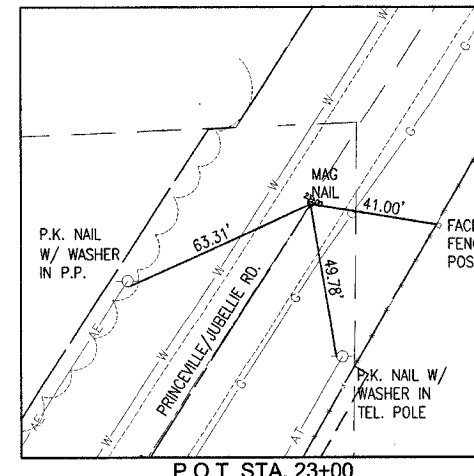
P.C. STA. 18+83.45
% I.P.



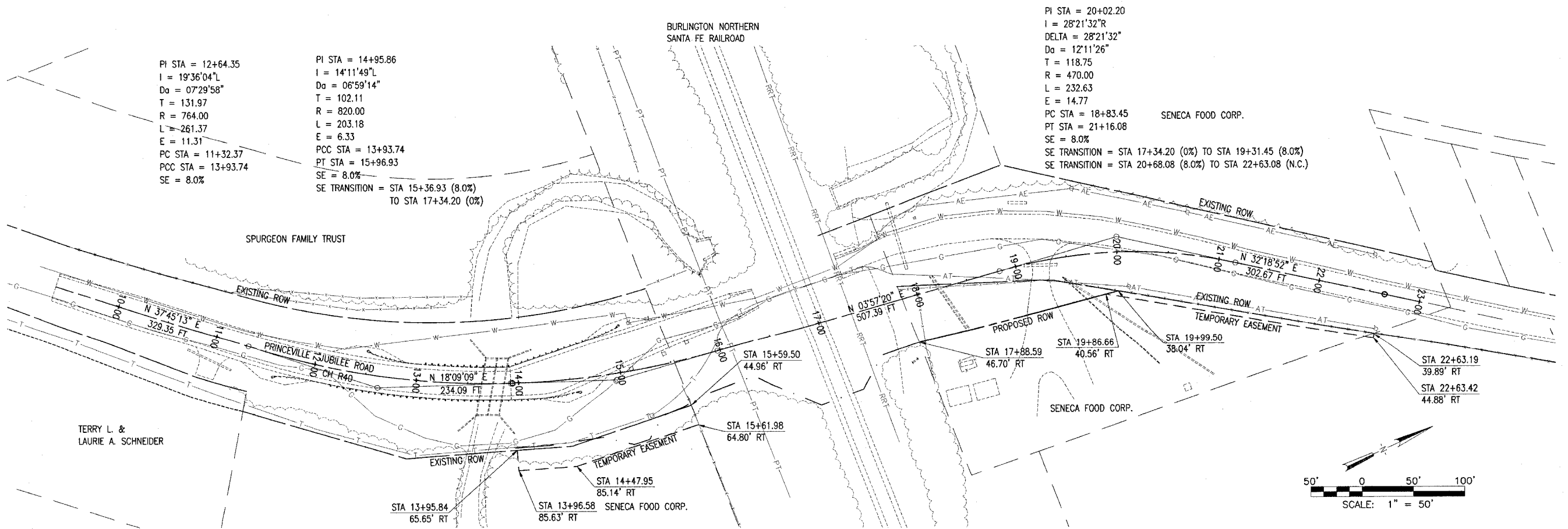
P.I. STA. 20+02.20
MAG NAIL



P.T. STA. 21+16.08
MAG NAIL



P.O.T. STA. 23+00
MAG NAIL

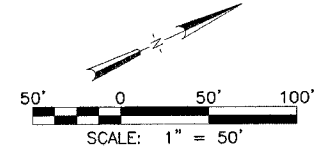


PI STA = 12+64.35
I = 19°36'04" L
Da = 07'29"58"
T = 131.97
R = 764.00
L = 261.37
E = 11.31
PC STA = 11+32.37
PCC STA = 13+93.74
SE = 8.0%

PI STA = 14+95.86
I = 14°11'49" L
Da = 06°59'14"
T = 102.11
R = 820.00
L = 203.18
E = 6.33
PCC STA = 13+93.74
PT STA = 15+96.93
SE = 8.0%
SE TRANSITION = STA 15+36.93 (8.0%)
TO STA 17+34.20 (0%)

PI STA = 20+02.20
I = 28°21'32" R
DELTA = 28°21'32"
Da = 12°11'26"
T = 118.75
R = 470.00
L = 232.63
E = 14.77
PC STA = 18+83.45
PT STA = 21+16.08
SE = 8.0%
SE TRANSITION = STA 17+34.20 (0%) TO STA 19+31.45 (8.0%)
SE TRANSITION = STA 20+68.08 (8.0%) TO STA 22+63.08 (N.C.)

TERRY L. &
LAURIE A. SCHNEIDER



REVISION	DATE



PEORIA COUNTY

Revision No. 98P9008A	Drawn By TWZ	Checked By LAL
Drawn Date 12/16/2004	Drawn Date 11/09/04	Checked Date 12/16/04
Scale 1"=50'	Drawn By TWZ	Checked By LAL

Phone: (309) 691-0902
Fax: (309) 691-1327
www.hanson-inc.com
Offices Nationwide

HANSON
Professional Services Inc.
2800 W. Willow Knolls Road
Peoria, Illinois 61614-1129

HORIZONTAL CONTROL
AND REFERENCE TIES
RELOCATION OF COUNTY HIGHWAY R40
PEORIA COUNTY
COUNTY HIGHWAY R40 UNDER BNSF R.R.

DEC 17, 2004 9:29 AM PIA
L:\98_P083\98P9008A\PHASE2\SHETS\C-102TIES.DWG