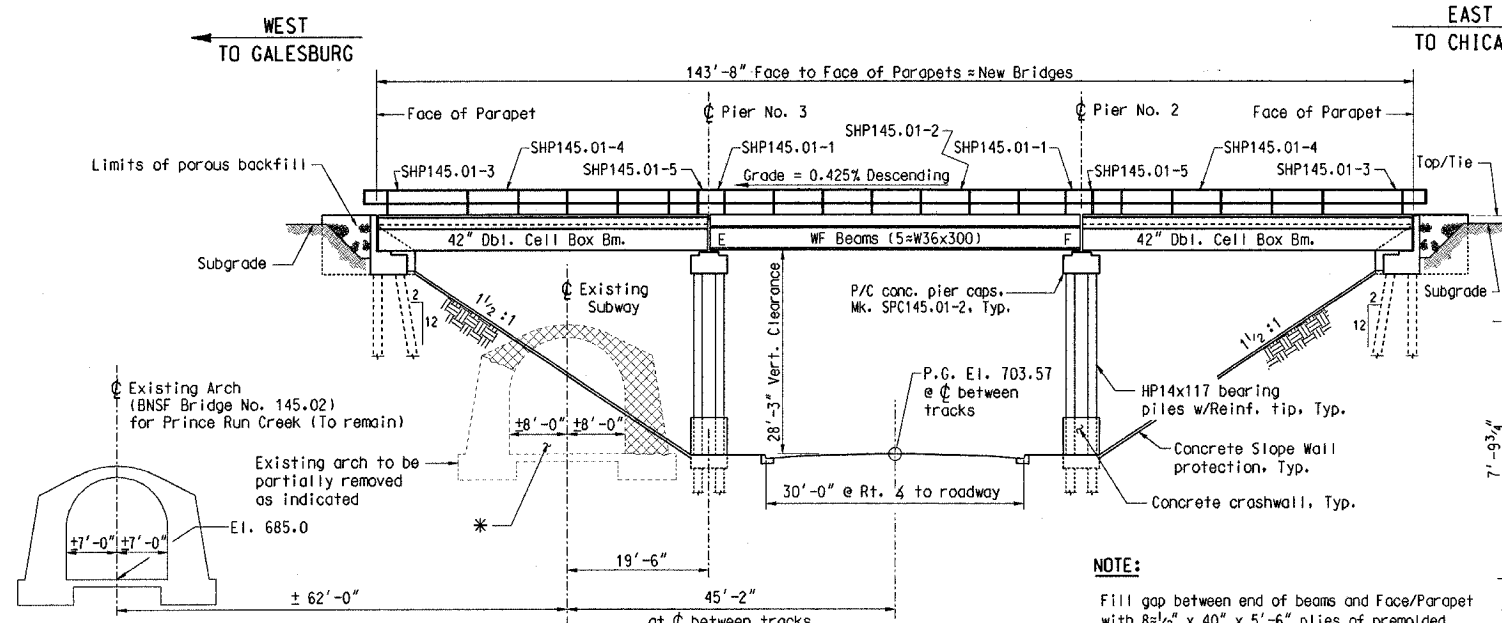
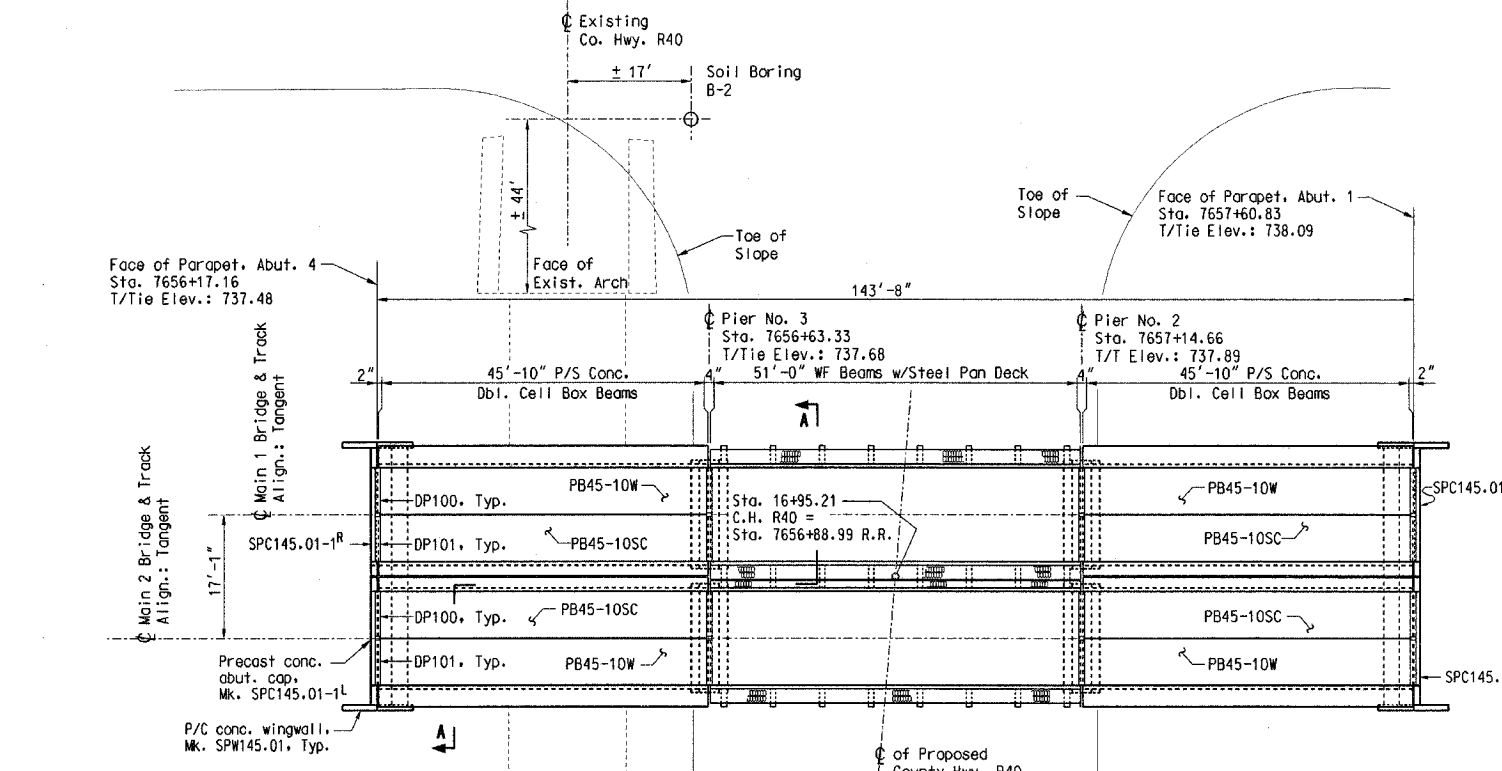


Row



ELEVATION
(Looking North)

NOTE:
Fill gap between end of beams and Face/Parapet with 8-1/2" x 40" x 5'-6" plies of premolded joint filler for each bridge.



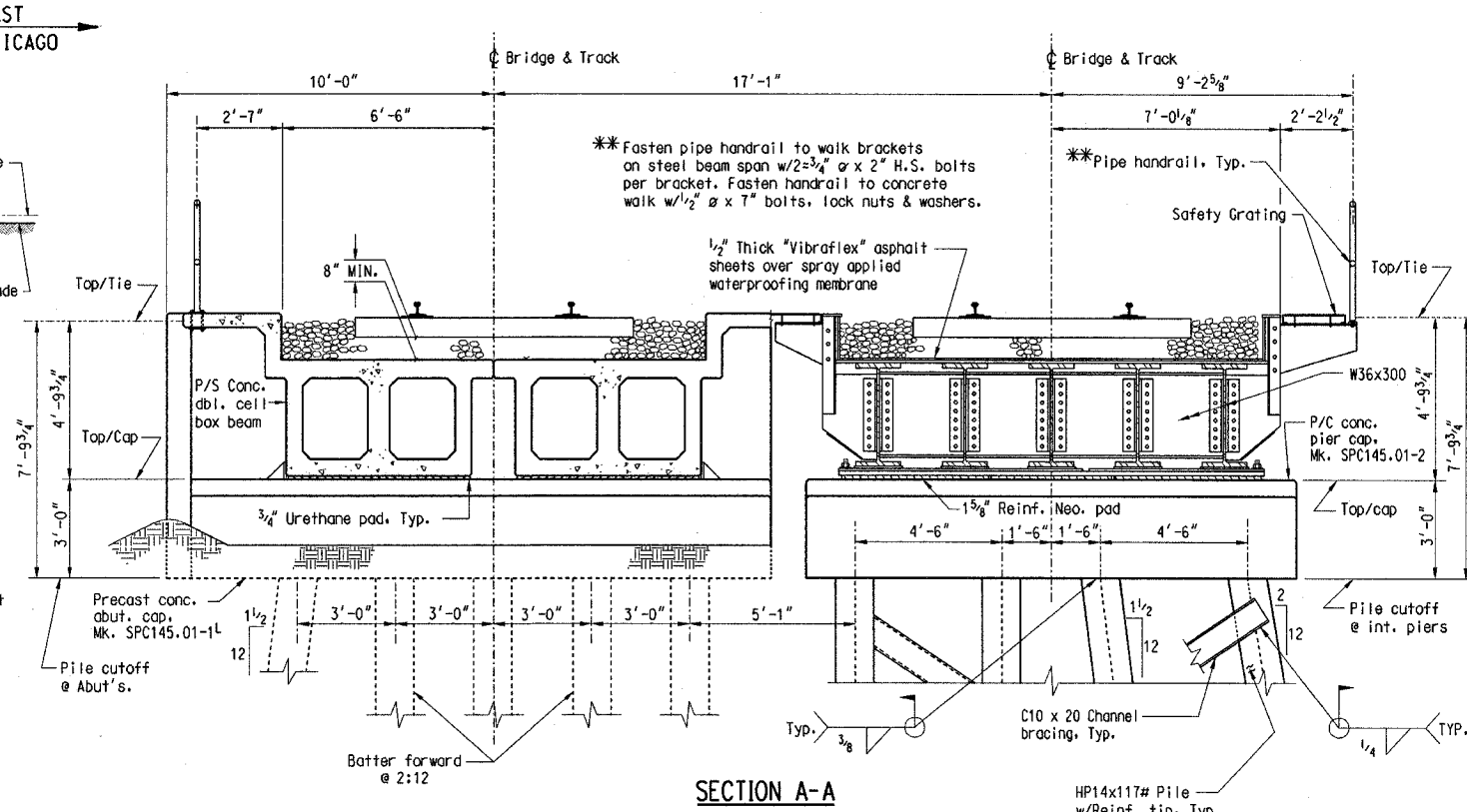
PLAN

TABLE OF ELEVATIONS			
LOCATION	TOP/TIE	TOP/CAP	PILE CUTOFF
Abutment No. 1	738.09	733.28	730.28
Pier No. 2	737.89	733.08	730.08
Pier No. 3	737.68	732.87	729.87
Abutment No. 4	737.48	732.67	729.67
T/T to Pile Cutoff	7'-9 3/4"	7'-9 3/4"	7'-9 3/4"

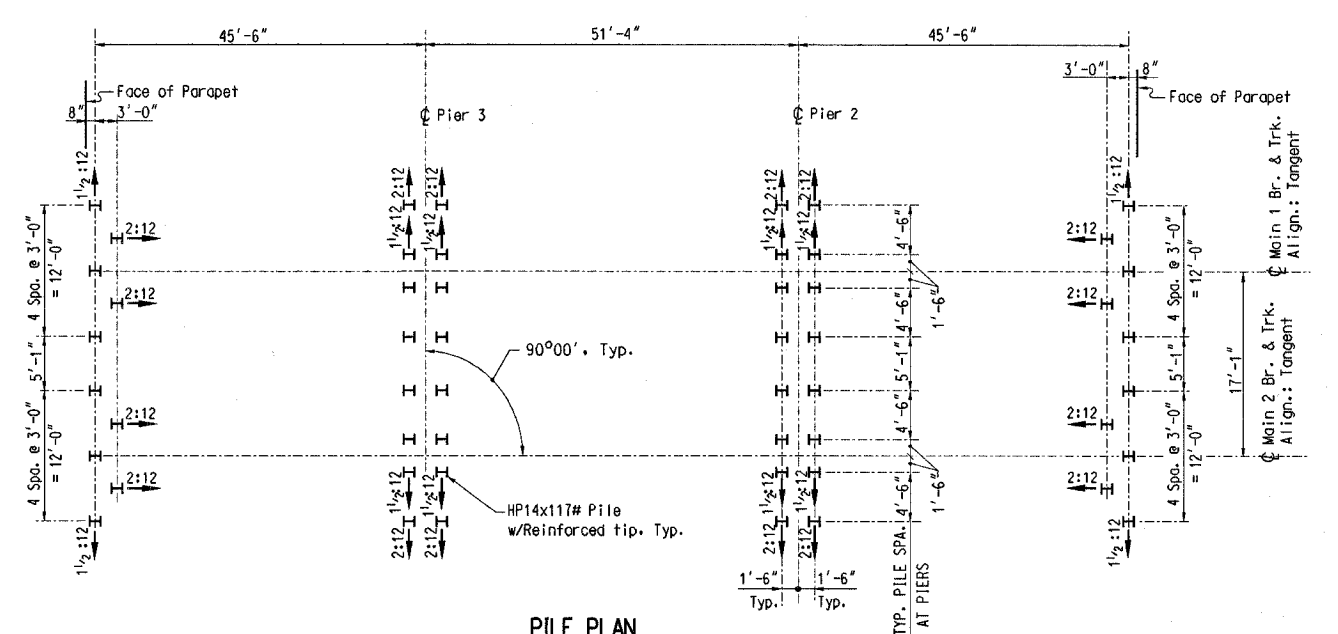
GENERAL NOTES
Design Loading: Cooper's E80 w/Diesel impact.
New construction shown in heavy lines. Existing structure to be removed shown in light, dashed lines.

REFERENCES
Corr. File ≈ Br. 145.01, Line Seg. 7000 Near Princeville, IL
42" x 7'-0" P/S Double Box Beams. . . St'd. Plan No. 0000-18003

PILE NOTES
Piles shall be driven to refusal, if possible, or to a minimum ultimate resistance of 300 tons as determined by the Modified ENR formula.
All piles are to be driven with reinforced tips (Pile points).
Pile spacings shown are at pile cutoff elevation.
Symbol X:12 denotes direction and amount of pile batter.



SECTION A-A



PILE PLAN

TABLE OF LIFTING WEIGHTS		
DESCRIPTION	MARK NO.	Est'd. Wt. (Lbs.)
P/C Concrete Abutment Cap	SPC145.01-1	47,500
P/C Concrete Pier Cap	SPC145.01-2	33,200
45'-10" P/S Conc. Dbl. Cell Box Beam w/Walk	PB45-10W	92,000
45'-10" P/S Conc. Dbl. Cell Box Beam w/Curb	PB45-10SC	87,500
51'-0" O. to O. Steel beam span w/Walk		125,000
P/C Concrete Wingwall	SPW145.01	8,400

LIST OF DRAWINGS	
PLAN NO.	TITLE
7000-145.01-01	General Plan & Elevation = New Bridges
7000-145.01-02	C-I-P Concrete Collision Wall & Erection Details
7000-145.01-03	Precast Concrete Details (1 of 2)
7000-145.01-04	Precast Concrete Details (2 of 2)
7000-145.01-05	51'-0" WF Beam Span
7000-145.01-06	Steel Ballast Pan Details
7000-145.01-07	Misc. Steel Details
7000-145.01-08	Misc. Details and Bill of Material

DES: KHJ DRW: KHJ CHK: MGG
DATE: Nov., 2004 AUTH: 7-7000-05 LINE SEG: 7000
BRIDGE ENGINEERING KANSAS CITY, KS
APPROVED: *K.H. Jennison*
ASSISTANT DIRECTOR STRUCTURES DESIGN

CHICAGO, IL TO FT. MADISON, IA
BRIDGE 145.01
OVER CO. HWY. R40 NEAR PRINCEVILLE, IL
GENERAL PLAN & ELEVATION
NEW BRIDGES
PLAN NO.: 7000-145.01-01 SHEET: 1 of 8

