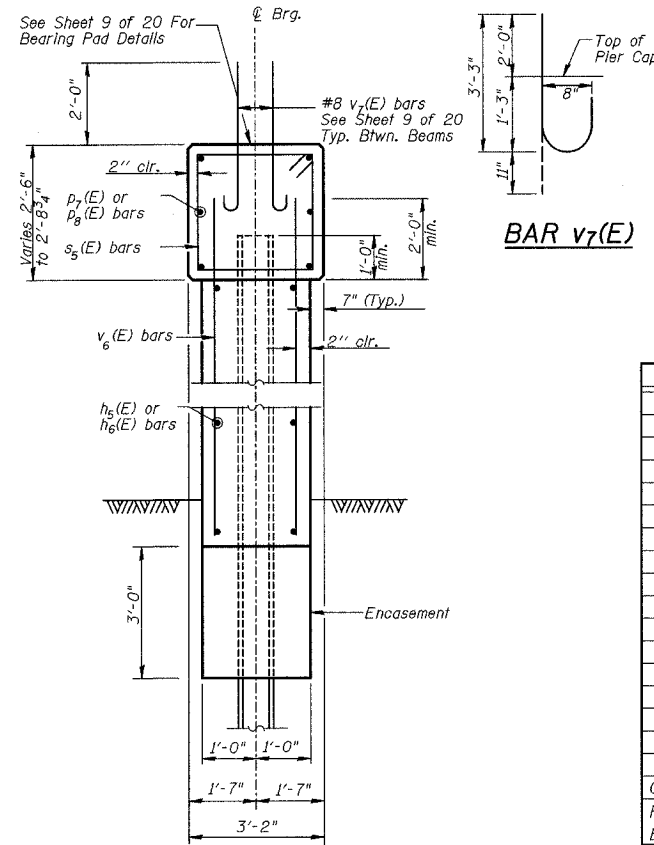
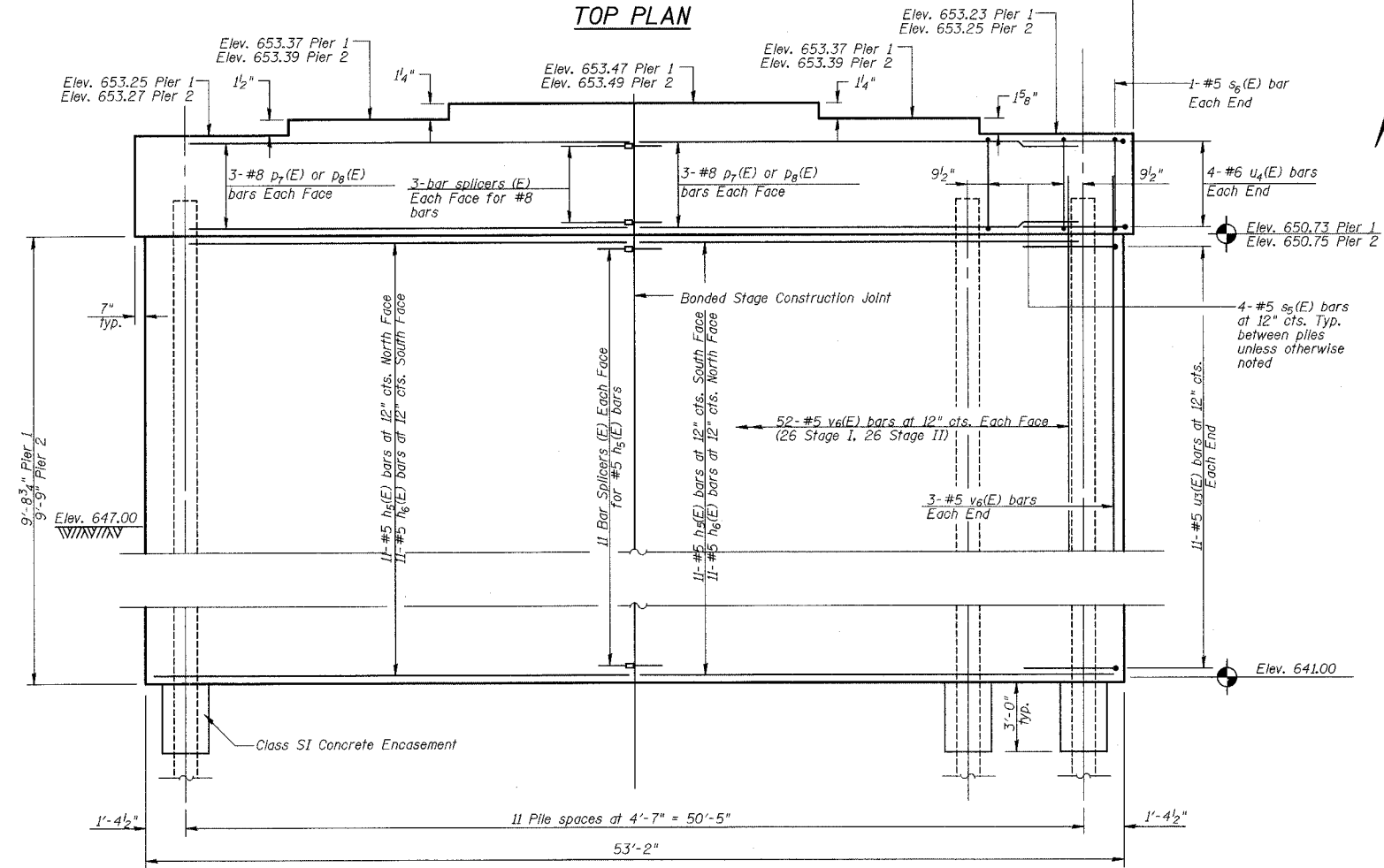
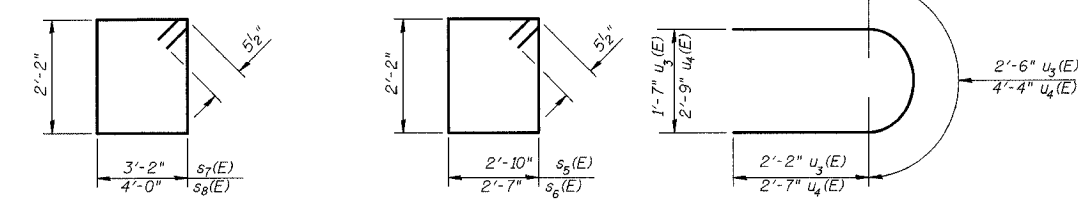
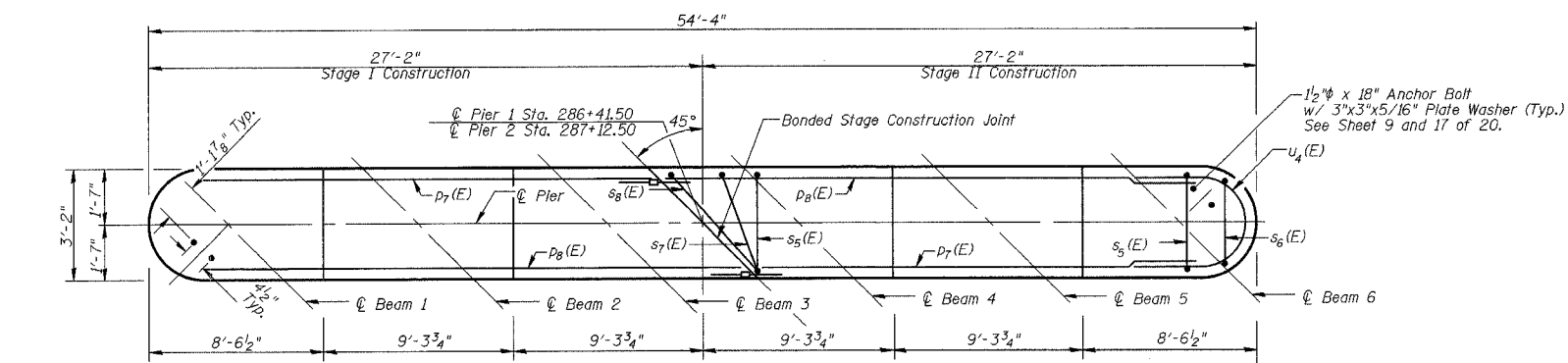


F.A.P. NO.	SECTION	COUNTY	TOTAL SHEETS	SHEET NO.
711	115(BY)-D(BR)	VERMILION	93	62
FED. ROAD DIST. NO.	ILLINOIS	FED. AID PROJECT		

SHEET NO. 15
SHEETS 20

CONTRACT NO. 90843



NOTES

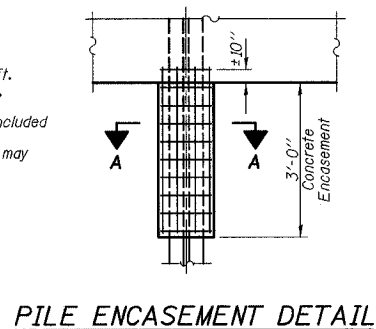
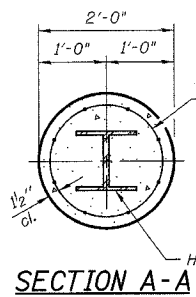
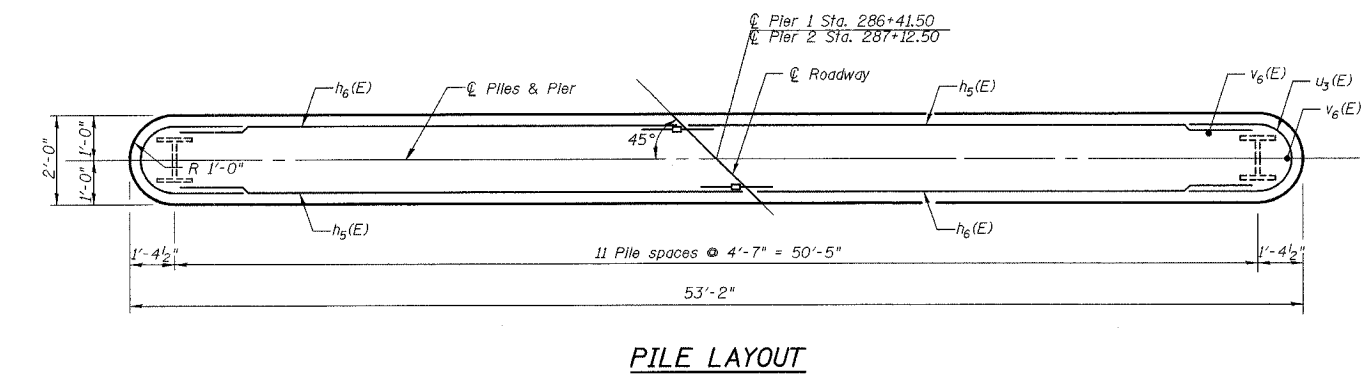
Four steps monolithically with cap. Reinforcement bars designated (E) shall be epoxy coated. For anchor bolt installation see sheet 17 of 20. All edges shall have standard $\frac{1}{4}"$ chamfers except as noted.

PILE DATA

Type: HP 12x63
Capacity: 55 Tons
Driven to: 83 Tons
Est. Length: 66' at Pier 1
Est. Length: 60' at Pier 2
No. Req'd: 23 + 1 Test Pile (Pier 1)

BILL OF MATERIAL (For Both Piers)

Bar	No.	Size	Length	Shape
$h_5(E)$	44	#5	26'-3"	—
$h_6(E)$	44	#5	24'-7"	—
$p_7(E)$	12	#8	24'-0"	—
$p_8(E)$	12	#8	26'-10"	—
$s_5(E)$	80	#5	10'-11"	□
$s_6(E)$	4	#5	10'-5"	□
$s_7(E)$	4	#5	11'-7"	□
$s_8(E)$	4	#5	13'-3"	□
$u_3(E)$	44	#5	6'-10"	U
$u_4(E)$	16	#6	9'-6"	U
$v_6(E)$	220	#5	11'-6"	—
$v_7(E)$	60	#8	4'-2"	—
Concrete Structures		Cu Yd	113.5	
Reinforcement Bars, Epoxy Coated		Pound	8,890	
Structure Excavation		Cu Yd	140.0	
Driving Steel Piles		Foot	1,446	
Underwater Structural Excavation Protection Location 3		Each	1	
Bar Splicers		Each	56	
Furnishing Steel Piles		Foot	1,446	
HP 12x63				
Test Piles Steel		Each	1	
HP 12x63				



ILLINOIS DEPARTMENT OF TRANSPORTATION
PIERS
U.S. ROUTE 136 OVER
BEAN CREEK
F.A.P. ROUTE 711
SECTION 115(BY)-D(BR)
VERMILION COUNTY
STA. 286+77.00
STRUCTURE NUMBER 092-0201