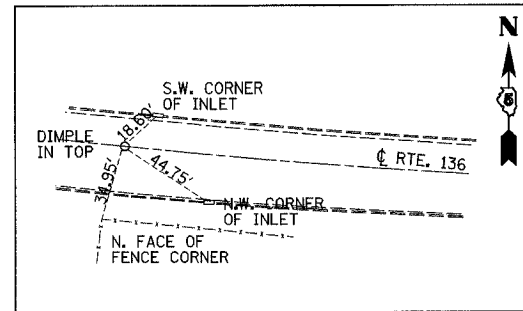
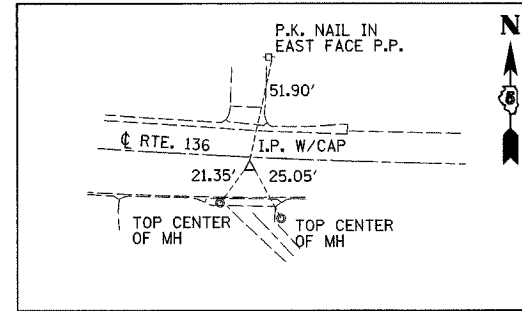


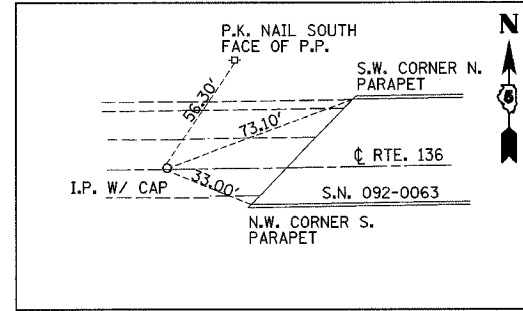
FAP RTE.	SECTION	COUNTY	TOTAL SHEETS	SHEET NO.
711	115(BY,BY-1)BR	VERMILION	93	13
FED. ROAD DIST. NO. 7 ILLINOIS		FED. AID PROJECT		
CONTRACT NO. 90843				



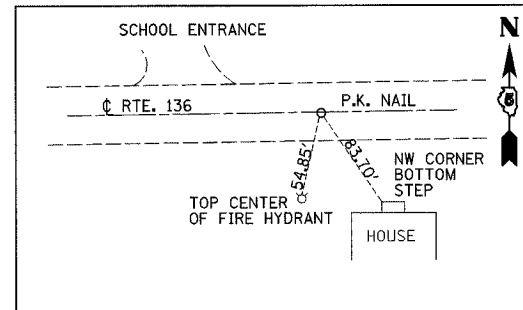
P.C. STA. 230+95.34



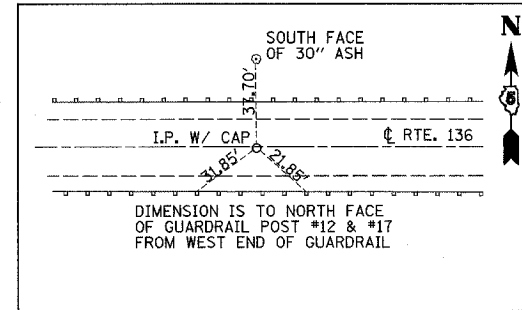
P.I. STA. 232+96.34



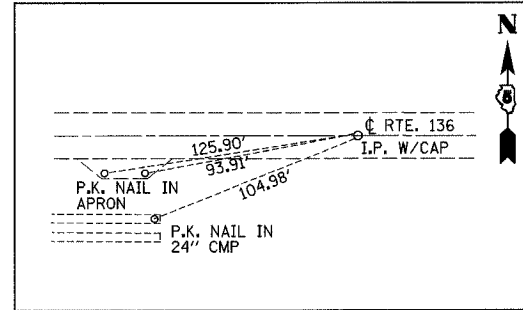
P.T. STA. 234+96.79



P.O.T. STA. 247+52.63



P.O.T. STA. 279+48.95



P.O.T. STA. 294+06.38

BENCHMARKS

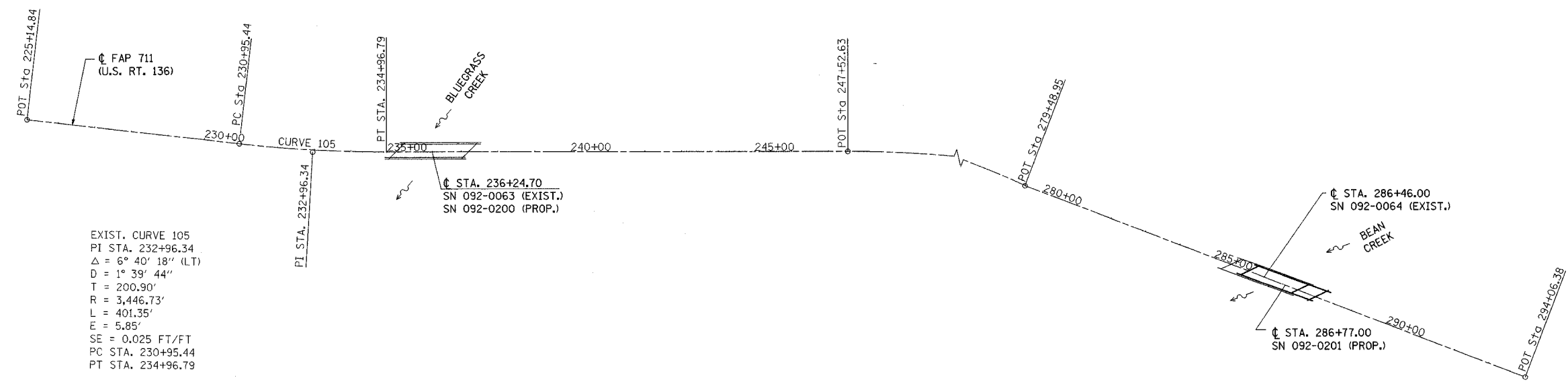
BM 4598-10
22.19' RT, STA. 235+30.95, EL. 662.94
CHISLED SQUARE ON THE TOP OF THE WEST END OF THE SOUTH PARAPET WALL S.N. 092-0063

BM 4598-11
29.62' LT, STA. 237+34.03, EL. 659.76
(DESCRIPTION UNKNOWN)

BM 3
21.00' LT, STA. 274+86.00, EL. 663.22
CHISLED "X" IN HEADWALL (N.E. OF INTERSECTION OF US 136 & T.R. 840E)

BM 4598-01
21.36' RT, STA. 285+44.40, EL. 658.27
(DESCRIPTION UNKNOWN)

BM 4598-02
22.09' LT, STA. 287+48.18, EL. 658.30
TOP OF HUBGARD NORTHWEST CORNER OF S.N. 092-0064



EXIST. CURVE 105
PI STA. 232+96.34
 $\Delta = 6^\circ 40' 18''$ (LT)
D = 1° 39' 44"
T = 200.90'
R = 3,446.73'
L = 401.35'
E = 5.85'
SE = 0.025 FT/FT
PC STA. 230+95.44
PT STA. 234+96.79

REVISIONS	
NAME	DATE

ILLINOIS DEPARTMENT OF TRANSPORTATION

CONTROL TIES, ALIGNMENT AND BENCHMARKS

DATE 5/03
DRAWN BY MLO
CHECKED BY SJK