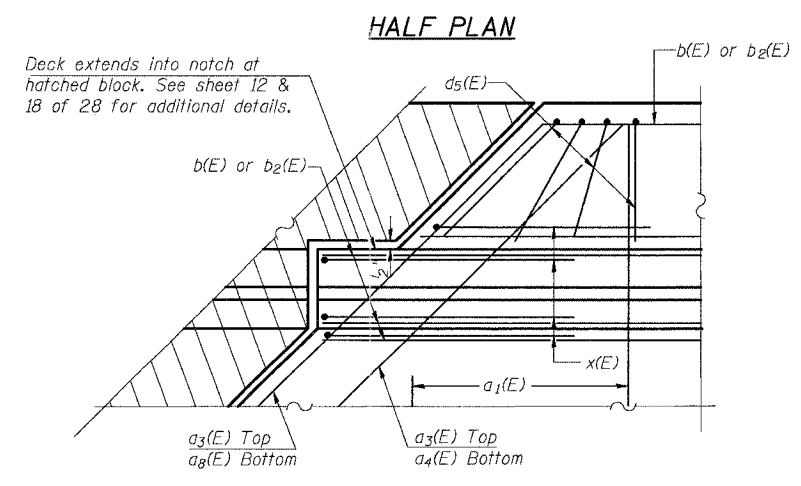
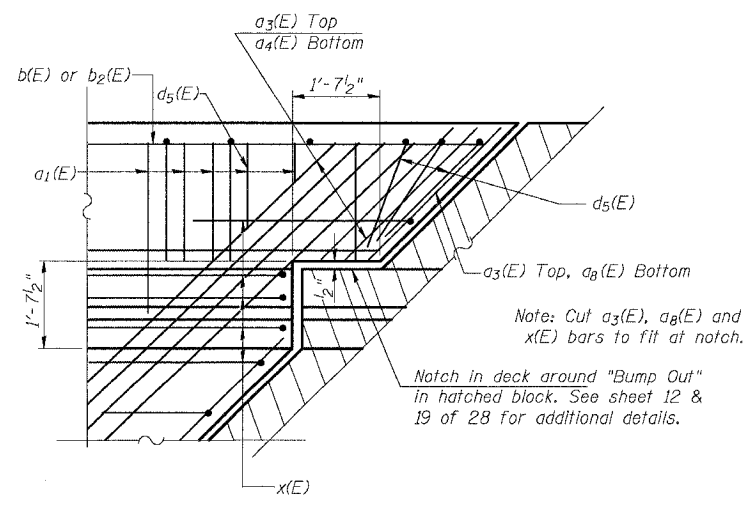
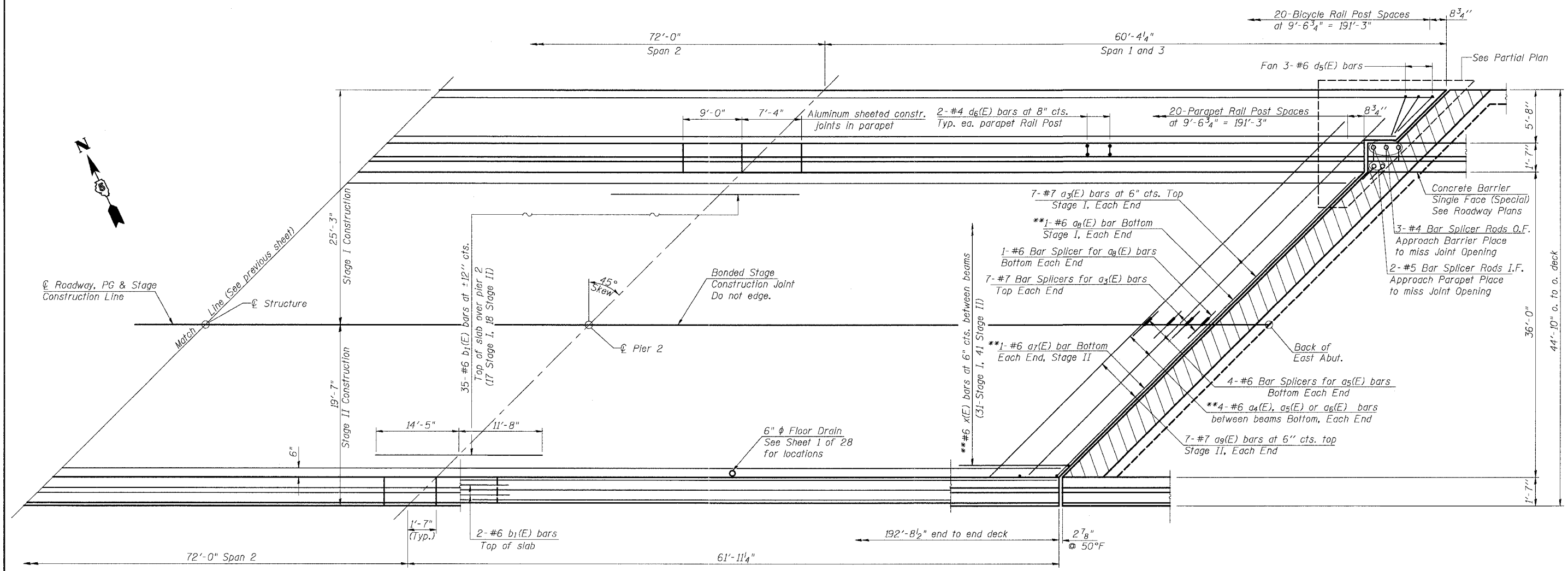


FAP ROUTE	SECTION	COUNTY	TOTAL SHEETS	SHEET NO.	SHEET NO. 8 28 SHEETS
711	115(BY)BR	VERMILION	93	27	
FED. ROAD DIST. NO.	ILLINOIS	FED. AID PROJECT-			
CONTRACT NO. 90843					



\*\*See diaphragm at abutments on Sheet 11 of 28.

**Min. Bar Lap**  
#5 bars = 1'-8"

**NOTES**

See Sheet 9 and 10 of 28 for superstructure details, parapet reinforcement and Bill of Material.  
Reinforcement bars designated (E) shall be epoxy coated.  
Bars indicated thus 20 x 3-#5 etc. indicates 20 lines of bars with 3 lengths per line.  
See Sheet 11 of 28 for abutment diaphragm details.  
See Sheet 24 of 28 for Bar Splicer Details.

Work this Sheet with Sheet 7 of 28.

ILLINOIS DEPARTMENT OF TRANSPORTATION	
SHEET TITLE SUPERSTRUCTURE	
PROJECT US RTE 136 OVER BLUEGRASS CREEK FAP ROUTE 711 SECTION 115(BY)BR VERMILION COUNTY STATION 236+24.70 STRUCTURE NUMBER 092-0200	PROJECT NO. 01054 SCALE DATE 05/18/04 DRAWN BY TFG CHECKED BY KPS/CME/MCB DRAWING NO.
COOMBE-BLOXDORF P.C. Engineers / Land Surveyors Springfield, Illinois	8
Design Firm License No. 184-002703	OF 28 SHTS

06/17/2004  
3:06:50pm

super