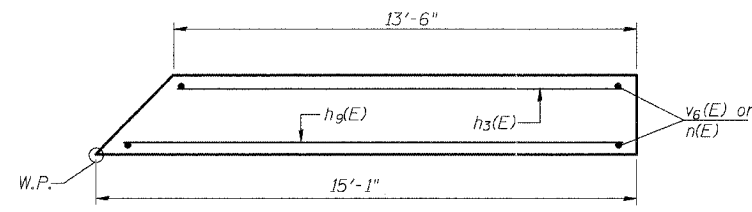
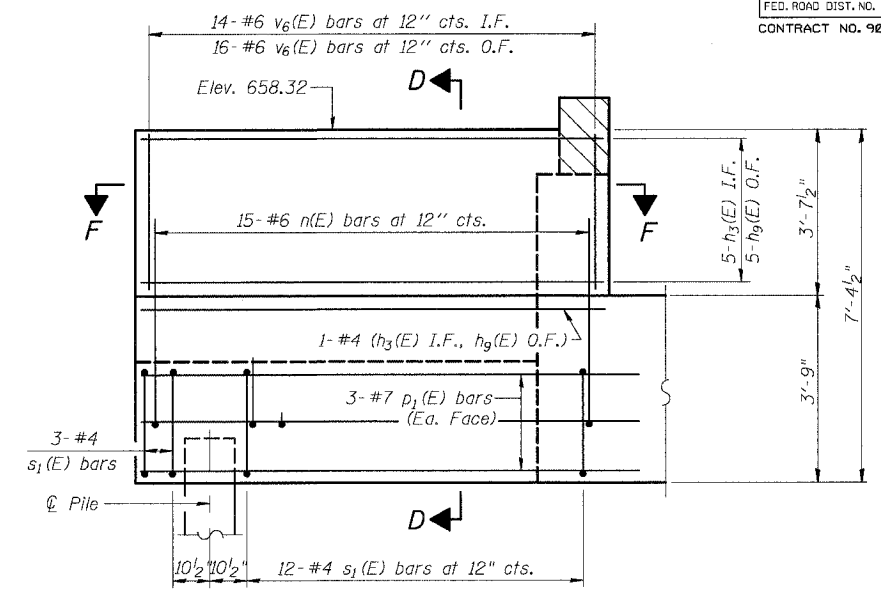


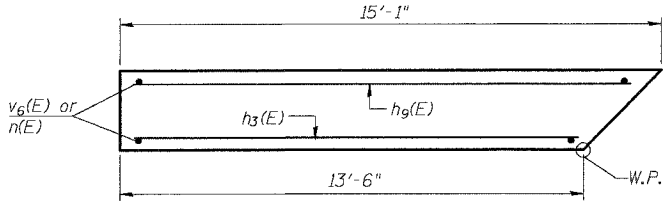
N. WING WALL ELEVATION W. ABUT.
(Looking South)



SECTION E-E



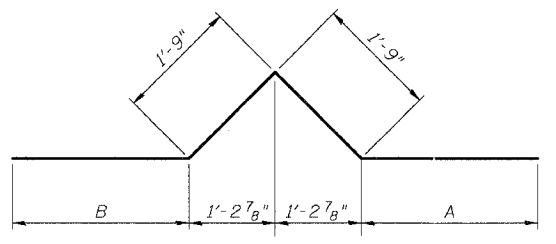
N. WING WALL ELEVATION E. ABUT.
(Looking South)



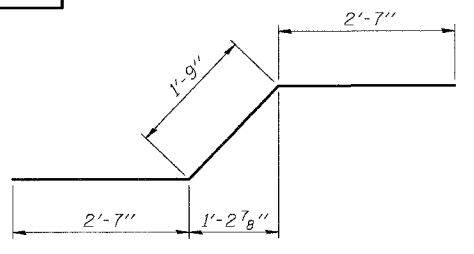
SECTION F-F

DIM. TABLE

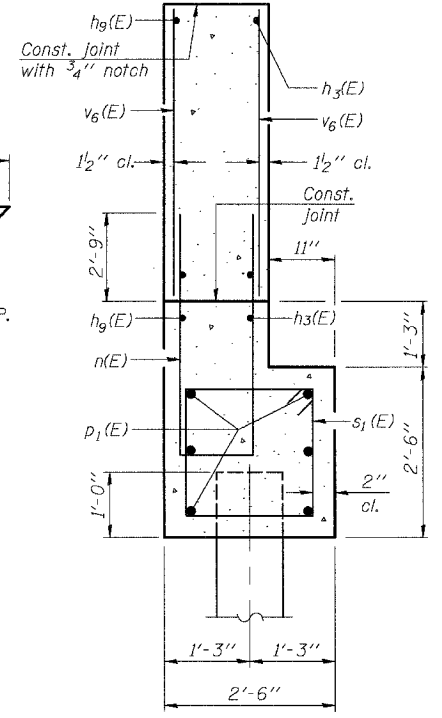
BAR	A	B
s(E)	3'-2"	4'-7"
s1(E)	2'-2"	2'-2"
s2(E)	3'-2"	6'-6"
h10(E)	2'-7"	2'-7"
h11(E)	2'-2"	2'-2"



BAR h10(E) or h11(E)



BAR h7(E)



SECTION D-D

Work this sheet with sheets 18, 19 and 20 of 28.

ILLINOIS DEPARTMENT OF TRANSPORTATION

SHEET TITLE: **ABUTMENT DETAILS**

PROJECT	PROJECT NO.
US RTE 136 OVER BLUEGRASS CREEK	01054
FAP ROUTE 711 SECTION 115(BY)BR	DATE
VERMILION COUNTY	05/18/04
STATION 236+24.70	DRAWN BY
STRUCTURE NUMBER 092-0200	TFG
	CHECKED BY
	KPS/CME/MCB
	DRAWING NO.

COOMBE-BLOXDORF P.C.
Engineers / Land Surveyors
Springfield, Illinois

Design Firm License No. 184-002703

21
OF 28 SHTS.