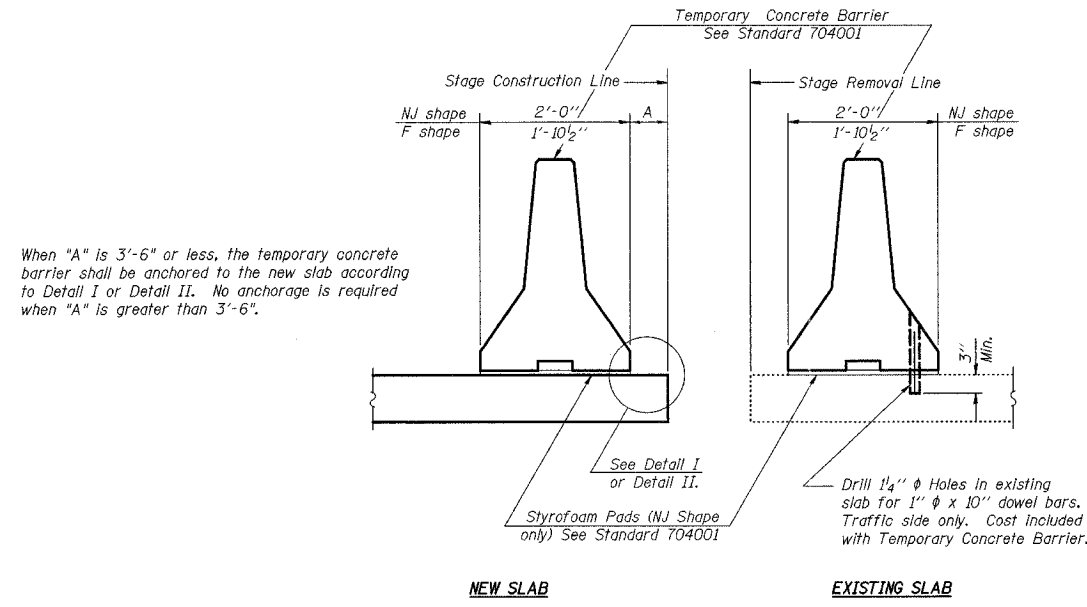


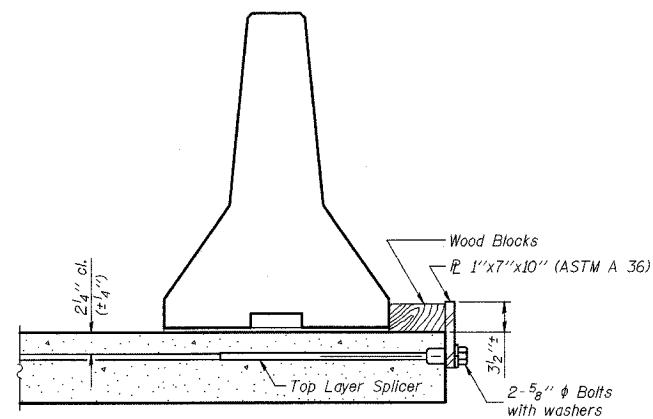
F.A.P. NO.	SECTION	COUNTY	TOTAL SHEETS	SHEET NO.
711	115(BY-1)BR	VERMILION	93	50
FED. ROAD DIST. NO.	ILLINOIS	FED. AID PROJECT		

SHEET NO. 3
SHEETS 20

CONTRACT NO. 90843

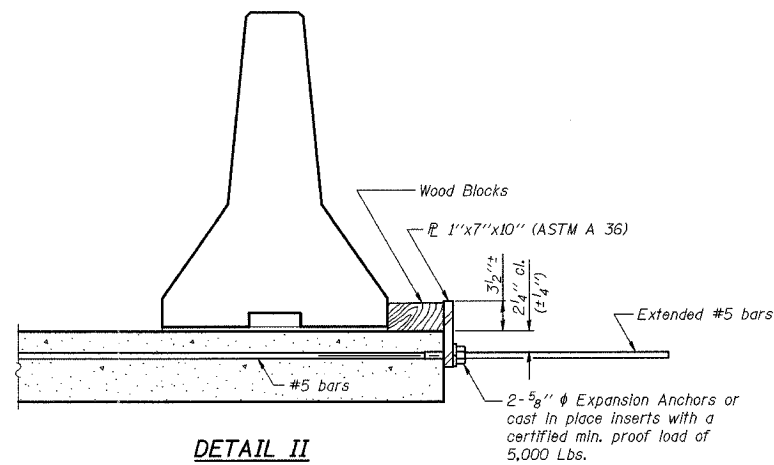


SECTIONS THRU SLAB



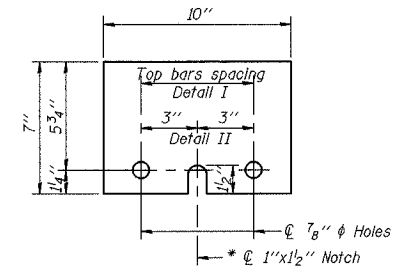
DETAIL I

The 1" x 7" x 10" Plate shall not be removed until Stage II Construction forms and reinforcement bars are in place.



DETAIL II

The 1" x 7" x 10" Plate shall not be removed until Stage II Construction forms and all reinforcement bars are in place and the concrete is ready to be placed.



1" x 7" x 10"

* Required only with Detail II

NOTES

Detail I - With Bar Splicer or Couplers:
Connect one (1) 1" x 7" x 10" steel \bar{P} to the top layer of couplers with 2-5/8" ϕ bolts screwed to coupler at approximate ϕ of each barrier panel.

Detail II - With Extended Reinforcement Bars:
Connect one (1) 1" x 7" x 10" steel \bar{P} to the concrete slab with 2-5/8" ϕ Expansion Anchors or cast in place inserts spaced between the top layer of reinforcement at approximate ϕ of each barrier panel.

Cost of anchorage is included with Temporary Concrete Barrier.

R-27 9-01-03

BLANK, WESSELINK, COOK & ASSOCIATES

ENGINEERS - CONSULTANTS DECATUR, ILLINOIS

ILLINOIS DEPARTMENT OF TRANSPORTATION
TEMPORARY CONCRETE BARRIER
U.S. ROUTE 136 OVER
BEAN CREEK
F.A.P. ROUTE 711
SECTION 115(BY-1)BR
VERMILION COUNTY
STA. 286+77.00
STRUCTURE NUMBER 092-0201

DATE: OCT. 2003

DRAWN BY: MLO/NJV
CHECKED BY: PBB/SJK