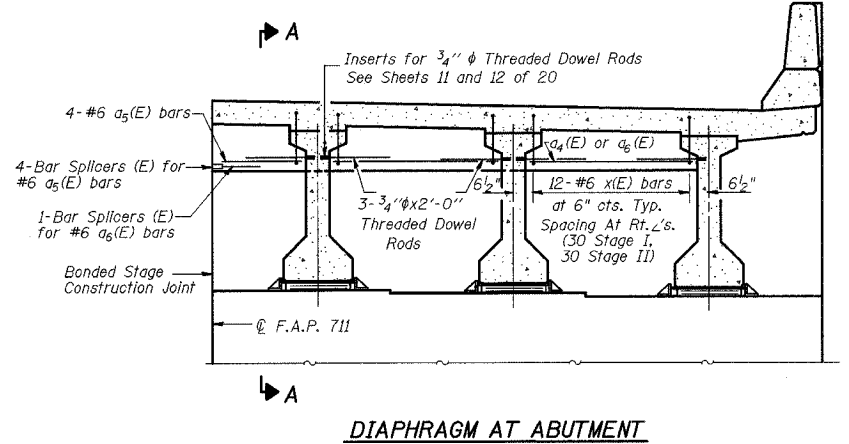


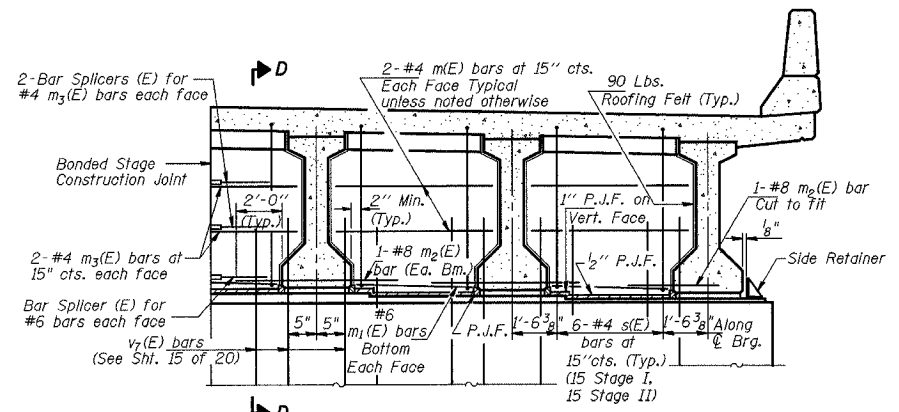
F.A.P. RTE.	SECTION	COUNTY	TOTAL SHEETS	SHEET NO.
711	115(BY)-1DBR	VERMILION	93	55
FED. ROAD DIST. NO.	ILLINOIS	FED. AID PROJECT		

SHEET NO. 8  
SHEETS 20

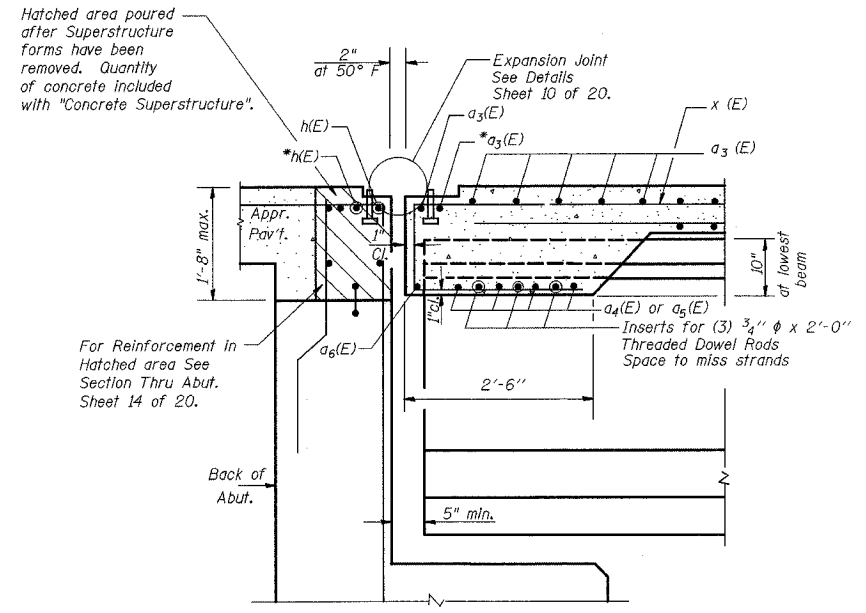
CONTRACT NO. 90843



DIAPHRAGM AT ABUTMENT



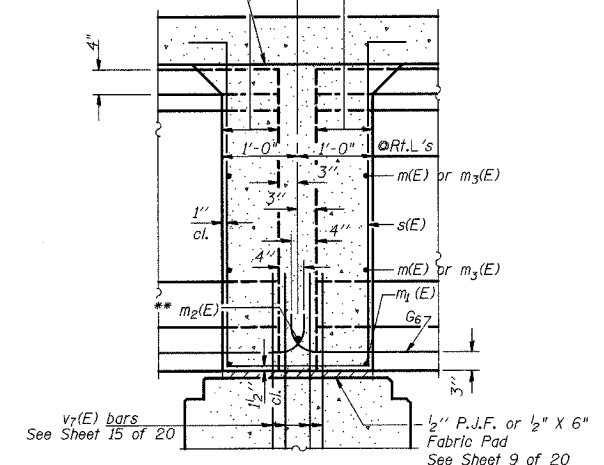
DIAPHRAGM AT PIER



SECTION A-A  
AT ABUTMENT  
(at Rt. L's)

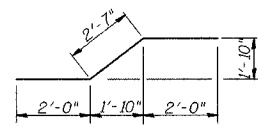
\* Place a<sub>3</sub>(E) and h(E) bars in back of anchor bolt as shown if required to maintain 1" cl. (+0-1/8"). Anchor bolts should be tied to a<sub>3</sub>(E) and h(E) bars.  
X(e) bars are placed parallel to beams.

Pour diaphragm flush with bott. of slab. Concrete in slab above this line shall be placed not less than 45 min. nor more than 90 min. after diaphragm has been poured.

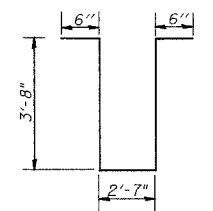


SECTION D-D  
AT PIER  
(along C of beams unless otherwise noted)

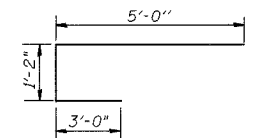
\*\* Tightly fasten the #8 bars together with No. 9 wire ties.  
Cost of 90 lb. roofing felt is included with Concrete Superstructure.  
s(e) bars are placed parallel to beams.



BAR m<sub>2</sub>(E)



BARS s(E)



BAR x(E)

NOTES:

Reinforcement bars shown on this sheet are included in Bill of Material on Sheet 7 of 20.  
Reinforcement bars designated (E) shall be epoxy coated.  
Work this Sheet with Sheets 6 and 7 of 20.

ILLINOIS DEPARTMENT OF TRANSPORTATION  
DIAPHRAGM DETAILS  
U.S. ROUTE 136 OVER  
BEAN CREEK  
F.A.P. ROUTE 711  
SECTION 115(BY)-1DBR  
VERMILION COUNTY  
STA. 286+77.00  
STRUCTURE NUMBER 092-0201

DATE: OCT. 2003

DRAWN BY: MLO/NJV  
CHECKED BY: PBB/SJK