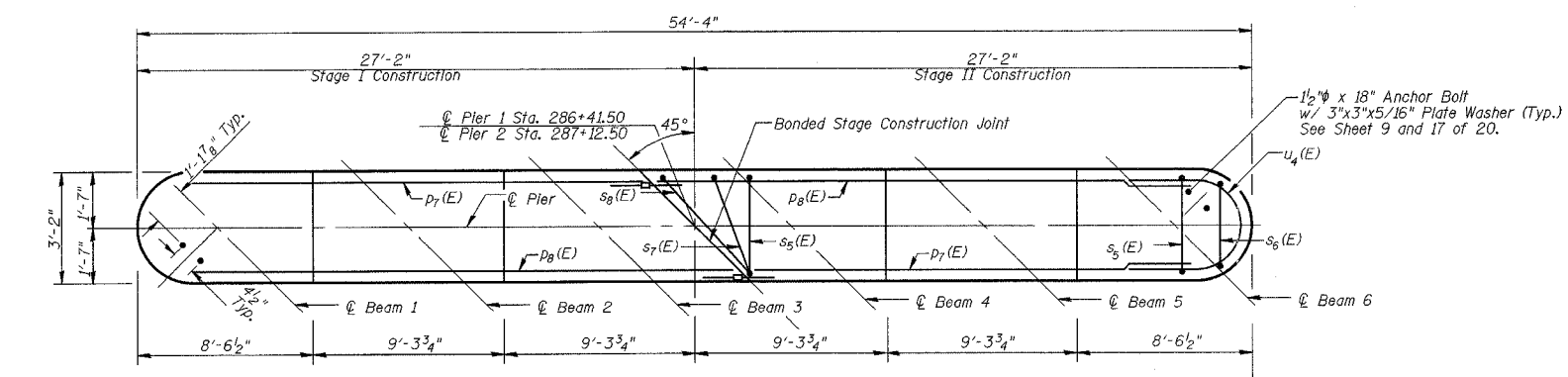


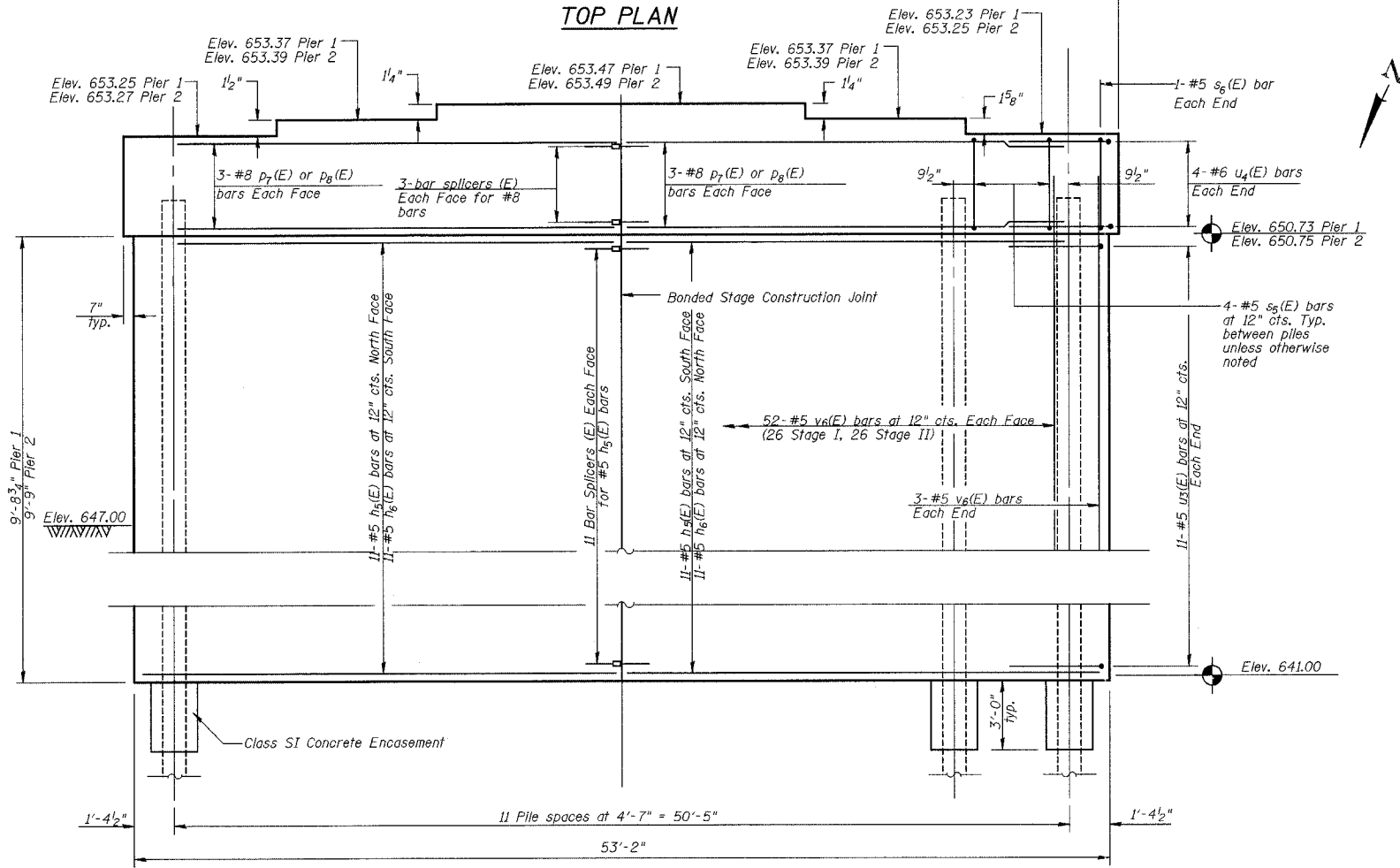
F.A.P. DIST.	SECTION	COUNTY	TOTAL SHEETS	SHEET NO.
711	115(BY)-118R	VERMILION	93	62
FED. ROAD DIST. NO.	ILLINOIS	FED. AID PROJECT		

SHEET NO. 15
SHEETS 20

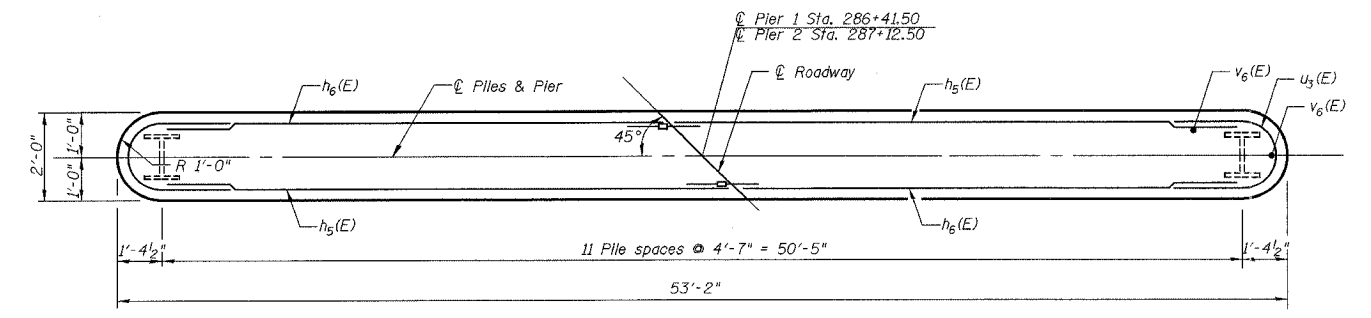
CONTRACT NO. 90843



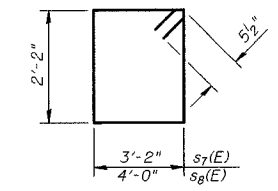
TOP PLAN



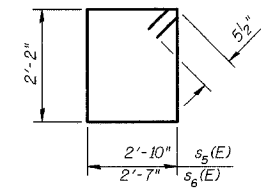
ELEVATION
(Looking East)



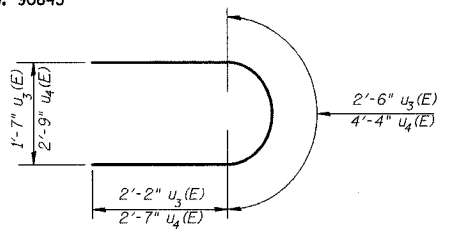
PILE LAYOUT



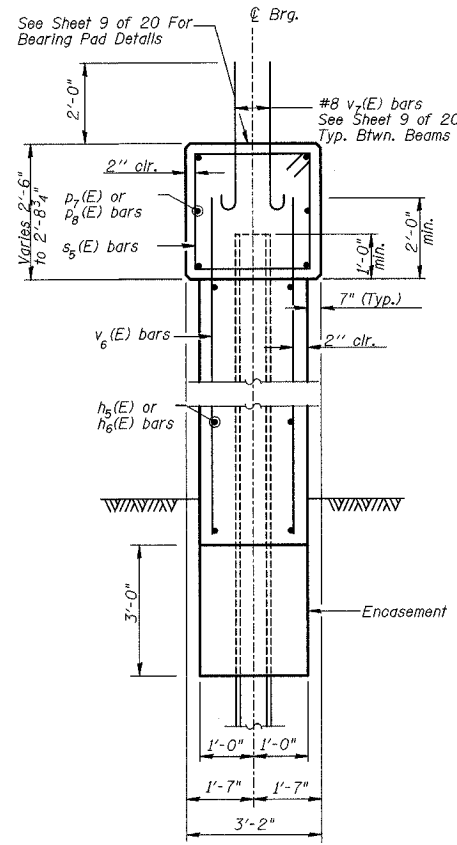
BAR s7(E) & s8(E)



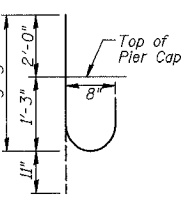
BAR s5(E) & s6(E)



BARS u3(E) & u4(E)



PIER SECTION



BAR v7(E)

NOTES

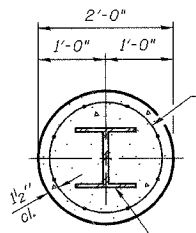
Four steps monolithically with cap. Reinforcement bars designated (E) shall be epoxy coated. For anchor bolt installation see sheet 17 of 20. All edges shall have standard 1/4" chamfers except as noted.

PILE DATA

Type: HP 12x63
Capacity: 55 Tons
Driven to: 83 Tons
Est. Length: 66' at Pier 1
Est. Length: 60' at Pier 2
No. Req'd: 23 + 1 Test Pile (Pier 1)

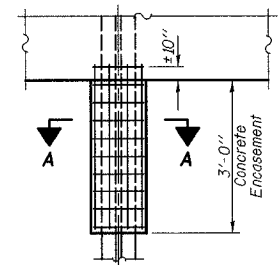
BILL OF MATERIAL
(For Both Piers)

Bar	No.	Size	Length	Shape
h5(E)	44	#5	26'-3"	—
h6(E)	44	#5	24'-7"	—
p7(E)	12	#8	24'-0"	—
p8(E)	12	#8	26'-10"	—
s5(E)	80	#5	10'-11"	□
s6(E)	4	#5	10'-5"	□
s7(E)	4	#5	11'-7"	□
s8(E)	4	#5	13'-3"	□
u3(E)	44	#5	6'-10"	U
u4(E)	16	#6	9'-6"	U
v6(E)	220	#5	11'-6"	—
v7(E)	60	#8	4'-2"	—
Concrete Structures		Cu Yd	293.0	
Reinforcement Bars, Epoxy Coated		Pound	8,890	
Structure Excavation		Cu Yd	140.0	
Driving Steel Piles		Foot	1,446	
Underwater Structural Excavation Protection Location 3		Each	1	
Bar Splicers		Each	56	
Furnishing Steel Piles HP 12x63		Foot	1,446	
Test Piles Steel HP 12x63		Each	1	



SECTION A-A

Welded wire fabric 6 x 6-W4.0 x W4.0 weighing 58#/100 sq. ft. The cost of Excavation, Concrete Encasement and Reinforcement is included with Furnishing Piles. Forms for Encasement may be omitted when soil conditions permit.



PILE ENCASEMENT DETAIL

ILLINOIS DEPARTMENT OF TRANSPORTATION
PIERS
U.S. ROUTE 136 OVER
BEAN CREEK
F.A.P. ROUTE 711
SECTION 115(BY)-118R
VERMILION COUNTY
STA. 286+77.00
STRUCTURE NUMBER 092-0201

DATE: OCT. 2003

DRAWN BY: MLO/NJV
CHECKED BY: PBB/SJK