

STEEL PLATE BEAM GUARDRAIL, TYPE A - 63000000

STATION	STATION	LENGTH
RT OUT 424+14.50	TO 425+89.50	175.0
RT MED 423+54.50	TO 425+79.50	225.0
		TOTAL = 400.0 FEET

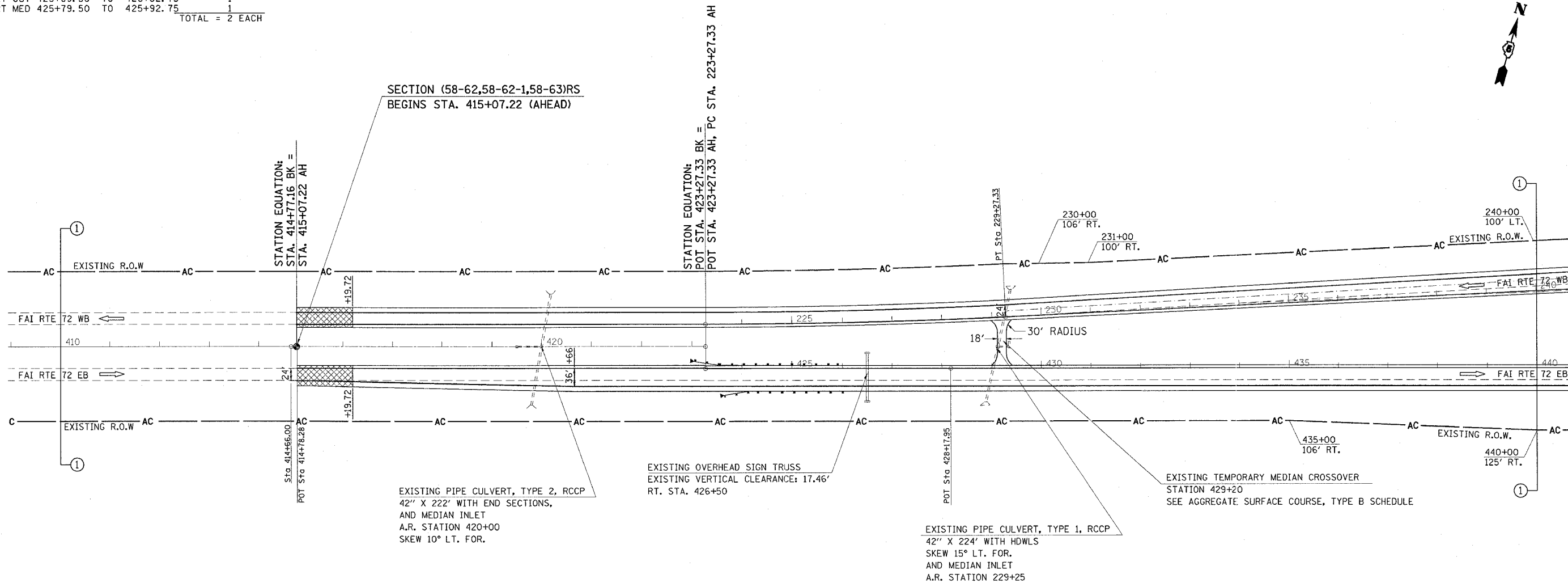
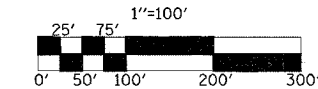
TRAFFIC BARRIER TERMINAL TYPE 1, SPECIAL (FLARED) - 63100169

STATION	STATION	EACH
RT OUT 423+64.50	TO 424+14.50	1
RT MED 423+04.50	TO 423+54.50	1
		TOTAL = 2 EACH

TRAFFIC BARRIER TERMINAL, TYPE 2 - 63100045

STATION	STATION	EACH
RT OUT 425+89.50	TO 426+02.75	1
RT MED 425+79.50	TO 425+92.75	1
		TOTAL = 2 EACH

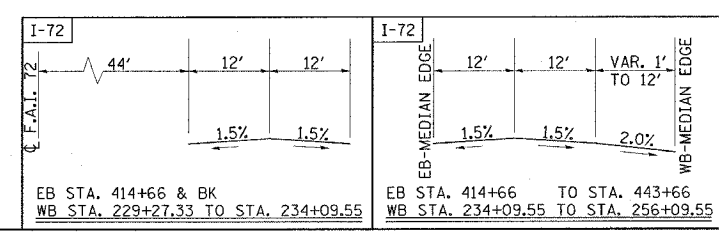
F.A.I. RTE.	SECTION	COUNTY	TOTAL SHEETS	SHEET NO.
72		MACON	136	27
STA. 409+00		TO STA. **		
FED. ROAD DIST. NO.		ILLINOIS FED. AID PROJECT		
(58-62,58-62-1,58-63)RS CONTRACT NO. 90879 ** STA. 240+00 (F.A.I. 72 WB) STA. 440+00 (F.A.I. 72 EB)				



LEGEND

	BITUMINOUS SURFACE REMOVAL-BUTT JOINT
	P.C.C. SURFACE REMOVAL-BUTT JOINT

TYPICAL CROSS-SECTIONS



REVISIONS

NAME	DATE

ILLINOIS DEPARTMENT OF TRANSPORTATION

SCALE:	DRAWN BY
DATE	CHECKED BY

SEC. 15, T. 16 N., R. 1 E., 8RD P.M.

STA. 409+00 TO 440+00