

SEC. 14, T. 16 N., R. 1 E., 3RD P.M.

TRAFFIC BARRIER TERMINAL, TYPE 2 - 63100045

STATION	STATION	EACH
RT 298+56.23	298+70.50	1
LT 298+51.23	298+65.50	1
TOTAL = 2 EACH		

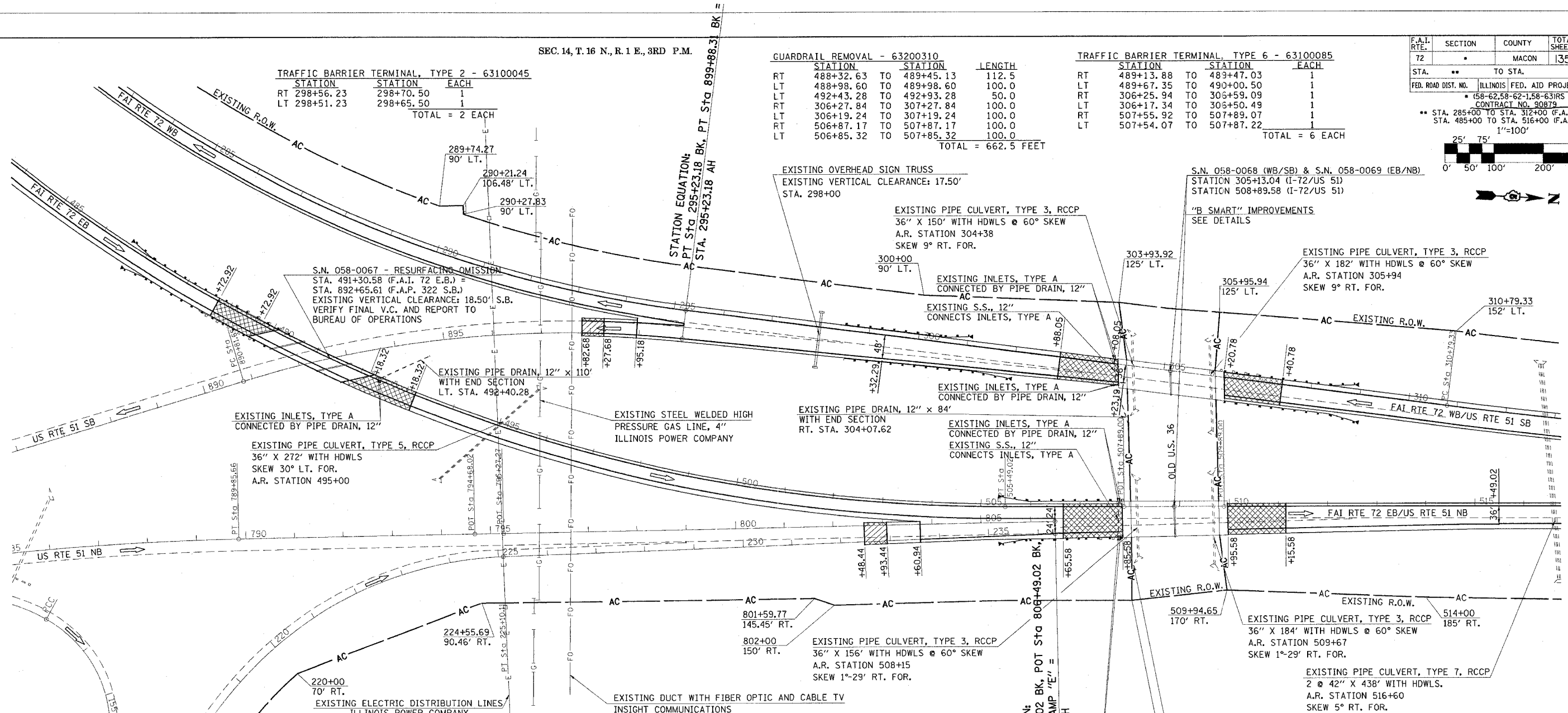
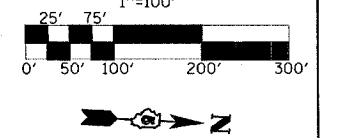
GUARDRAIL REMOVAL - 63200310

STATION	STATION	LENGTH
RT 488+32.63	TO 489+45.13	112.5
LT 488+98.60	TO 489+98.60	100.0
LT 492+43.28	TO 492+93.28	50.0
RT 306+27.84	TO 307+27.84	100.0
LT 306+19.24	TO 307+19.24	100.0
RT 506+87.17	TO 507+87.17	100.0
LT 506+85.32	TO 507+85.32	100.0
TOTAL = 662.5 FEET		

TRAFFIC BARRIER TERMINAL, TYPE 6 - 63100085

STATION	STATION	EACH
RT 489+13.88	TO 489+47.03	1
LT 489+67.35	TO 490+00.50	1
RT 306+25.94	TO 306+59.09	1
LT 306+17.34	TO 306+50.49	1
RT 507+55.92	TO 507+89.07	1
LT 507+54.07	TO 507+87.22	1
TOTAL = 6 EACH		

F.A.I. RTE.	SECTION	COUNTY	TOTAL SHEETS	SHEET NO.
72		MACON	135	30
STA. TO STA.				
FED. ROAD DIST. NO. ILLINOIS FED. AID PROJECT				
CONTRACT NO. 30879				
* (58-62-58-62-1-58-63)RS				
** STA. 285+00 TO STA. 312+00 (F.A.I. 72 WB)				
STA. 485+00 TO STA. 516+00 (F.A.I. 72 EB)				



S.N. 058-0067 - RESURFACING OMISSION
 STA. 491+30.58 (F.A.I. 72 E.B.) =
 STA. 892+65.61 (F.A.P. 322 S.B.)
 EXISTING VERTICAL CLEARANCE: 18.50' S.B.
 VERIFY FINAL V.C. AND REPORT TO
 BUREAU OF OPERATIONS

EXISTING PIPE CULVERT, TYPE S, RCCP
 36" X 272' WITH HDWLS
 SKEW 30° LT. FOR.
 A.R. STATION 495+00

EXISTING OVERHEAD SIGN TRUSS
 EXISTING VERTICAL CLEARANCE: 17.50'
 STA. 298+00

EXISTING PIPE CULVERT, TYPE 3, RCCP
 36" X 150' WITH HDWLS @ 60° SKEW
 A.R. STATION 304+38
 SKEW 9° RT. FOR.

S.N. 058-0068 (WB/SB) & S.N. 058-0069 (EB/NB)
 STATION 305+13.04 (I-72/US 51)
 STATION 508+89.58 (I-72/US 51)

"B SMART" IMPROVEMENTS
 SEE DETAILS

EXISTING PIPE CULVERT, TYPE 3, RCCP
 36" X 182' WITH HDWLS @ 60° SKEW
 A.R. STATION 305+94
 SKEW 9° RT. FOR.

EXISTING PIPE DRAIN, 12" X 110'
 WITH END SECTION
 LT. STA. 492+40.28

EXISTING STEEL WELDED HIGH
 PRESSURE GAS LINE, 4"
 ILLINOIS POWER COMPANY

EXISTING PIPE DRAIN, 12" X 84'
 WITH END SECTION
 RT. STA. 304+07.62

EXISTING INLETS, TYPE A
 CONNECTED BY PIPE DRAIN, 12"

EXISTING INLETS, TYPE A
 CONNECTED BY PIPE DRAIN, 12"
 EXISTING S.S., 12"
 CONNECTS INLETS, TYPE A

305+95.94
 125' LT.

310+79.33
 152' LT.

224+55.69
 90.46' RT.

EXISTING ELECTRIC DISTRIBUTION LINES
 ILLINOIS POWER COMPANY

EXISTING DUCT WITH FIBER OPTIC AND CABLE TV
 INSIGHT COMMUNICATIONS

EXISTING PIPE CULVERT, TYPE 3, RCCP
 36" X 156' WITH HDWLS @ 60° SKEW
 A.R. STATION 508+15
 SKEW 1°-29' RT. FOR.

EXISTING PIPE CULVERT, TYPE 3, RCCP
 36" X 184' WITH HDWLS @ 60° SKEW
 A.R. STATION 509+67
 SKEW 1°-29' RT. FOR.

EXISTING PIPE CULVERT, TYPE 7, RCCP
 2 @ 42" X 438' WITH HDWLS.
 A.R. STATION 516+60
 SKEW 5° RT. FOR.

EXISTING PIPE DRAIN, 12" X 76'
 WITH END SECTION
 RT. STA. 507+79.67

EXISTING INLETS, TYPE A
 CONNECTED BY PIPE DRAIN, 12"

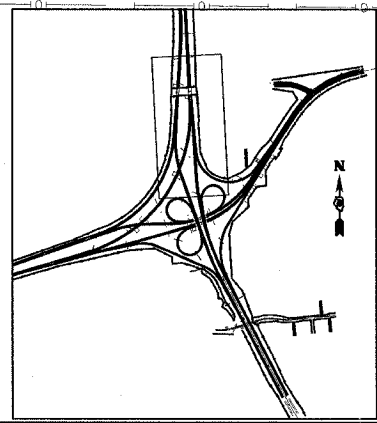
SEC. 13, T. 16 N., R. 1 E., 3RD P.M.

STEEL PLATE BEAM GUARDRAIL, TYPE A - 63000000

STATION	STATION	LENGTH
RT 487+26.38	TO 489+13.88	187.5
LT 487+17.35	TO 489+67.35	250.0
RT 298+70.50	TO 301+20.50	250.0
LT 298+65.50	TO 300+53.00	187.5
RT 306+59.09	TO 308+46.59	187.5
LT 306+50.49	TO 308+37.99	187.5
RT 505+93.42	TO 507+55.92	162.5
LT 505+91.57	TO 507+54.07	162.5
TOTAL = 1575.0 FEET		

TRAFFIC BARRIER TERMINAL TYPE 1,
 SPECIAL (FLARED) - 63100169

STATION	STATION	EACH
RT 486+76.38	TO 487+26.38	1
LT 486+67.35	TO 487+17.35	1
RT 301+20.50	TO 301+70.50	1
LT 300+53.00	TO 301+03.00	1
RT 308+46.59	TO 308+96.59	1
LT 308+37.99	TO 308+87.99	1
RT 505+43.42	TO 505+93.42	1
LT 505+41.57	TO 505+91.57	1
TOTAL = 8 EACH		



TYPICAL CROSS-SECTIONS

EB STA. 506+82.02 TO STA. 515+49.02	WB STA. 295+23.19 TO STA. 296+56.19	WB STA. 296+56.19 TO STA. 299+32.29	WB STA. 299+32.29 TO STA. 304+23.19	WB STA. 304+23.19 TO STA. 325+29.33
12' 12' VAR. 6' TO 0' 12' VAR. 12' TO 1'	12' 12' VAR. 10' TO 6'-9" 12' 12'	12' 12' VAR. 6'-9" TO 2' 12' 12'	12' 12' VAR. 12' TO 0' 12' 12'	12' 12' 12'
0.5% 1.5% 2.0% 2.0% 2.0%	S.E. TRANS. S.E. TRANS. 0% S.E. TRANS. S.E. TRANS.	2.0% 1.5% 0% 1.5% 2.0%	2.0% 1.5% 1.5% 2.0%	2.0% 1.5% 2.0%

LEGEND

	BITUMINOUS SURFACE REMOVAL-BUTT JOINT
	P.C.C. SURFACE REMOVAL-BUTT JOINT

PLAN NOTE
 UPON COMPLETION OF THE PROJECT, THE VERTICAL CLEARANCE OF ALL AFFECTED OVERHEAD SIGN TRUSSES SHALL BE VERIFIED AND REPORTED TO THE BUREAU OF OPERATIONS

ILLINOIS DEPARTMENT OF TRANSPORTATION

REVISIONS	NAME	DATE

SCALE: DATE DRAWN BY CHECKED BY

STA. 486+00 TO 516+00