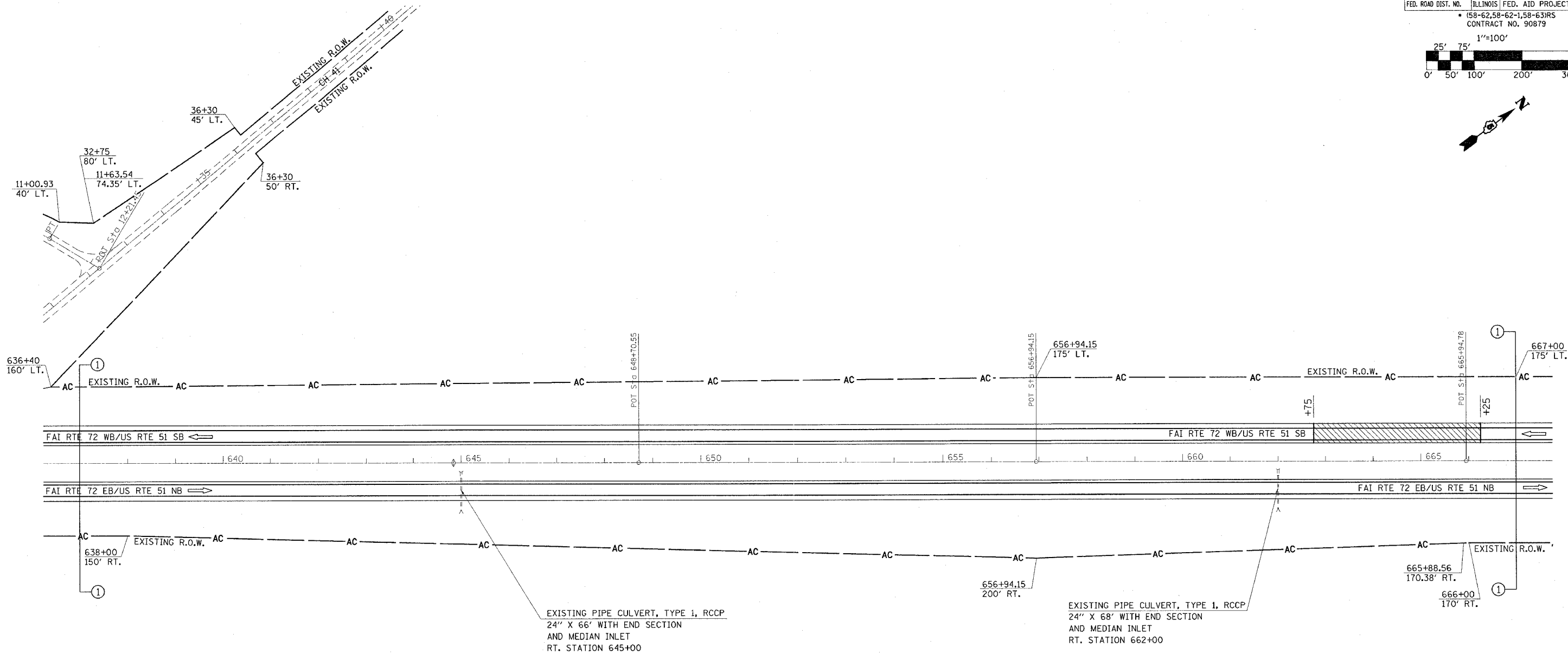
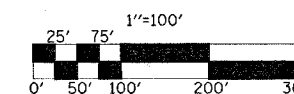


F.A.I. RTE.	SECTION	COUNTY	TOTAL SHEETS	SHEET NO.
72		MACON	135	35
STA. 637+00		TO STA. 667+00		
FED. ROAD DIST. NO. ILLINOIS FED. AID PROJECT				
• (58-62.58-62-1.58-63)RS				
CONTRACT NO. 90879				



EXISTING PIPE CULVERT, TYPE 1, RCCP
24" X 66' WITH END SECTION
AND MEDIAN INLET
RT. STATION 645+00

EXISTING PIPE CULVERT, TYPE 1, RCCP
24" X 68' WITH END SECTION
AND MEDIAN INLET
RT. STATION 662+00

LEGEND	
	BITUMINOUS SURFACE REMOVAL-BUTT JOINT
	P.C.C. SURFACE REMOVAL-BUTT JOINT
	BITUMINOUS SURFACE REMOVAL, 1/2"

REVISIONS	
NAME	DATE

ILLINOIS DEPARTMENT OF TRANSPORTATION

SCALE: _____
DATE _____

DRAWN BY _____
CHECKED BY _____

SEC. 31, T. 17 N., R. 2 E., 3RD P.M.

STA. 637+00 TO 667+00