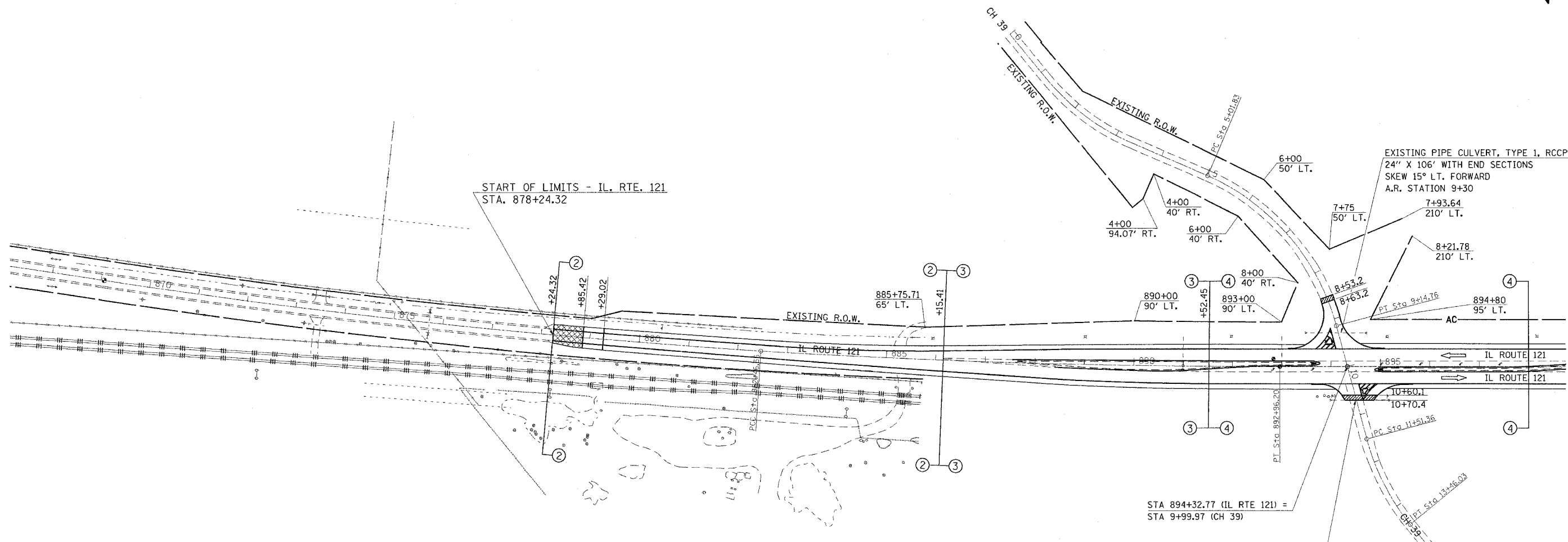
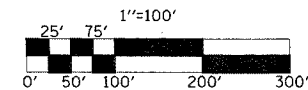


F.A.I. RTE.	SECTION	COUNTY	TOTAL SHEETS	SHEET NO.
72		MACON	135	43
STA. 878+24.32		TO STA. 898+00		
FED. ROAD DIST. NO. ILLINOIS FED. AID PROJECT				
• (58-62,58-62-1,58-63)RS				
CONTRACT NO. 90879				



EXISTING PIPE CULVERT, TYPE 1, RCCP
24" X 100' WITH END SECTIONS
SKEW 15° LT. FORWARD
A.R. STATION 10+70

LEGEND	
	BITUMINOUS SURFACE REMOVAL-BUTT JOINT
	P.C.C. SURFACE REMOVAL-BUTT JOINT

REVISIONS	
NAME	DATE

ILLINOIS DEPARTMENT OF TRANSPORTATION

SCALE: _____ DATE _____

DRAWN BY _____ CHECKED BY _____

STA. 878+24.32 TO 913+00
IL 121