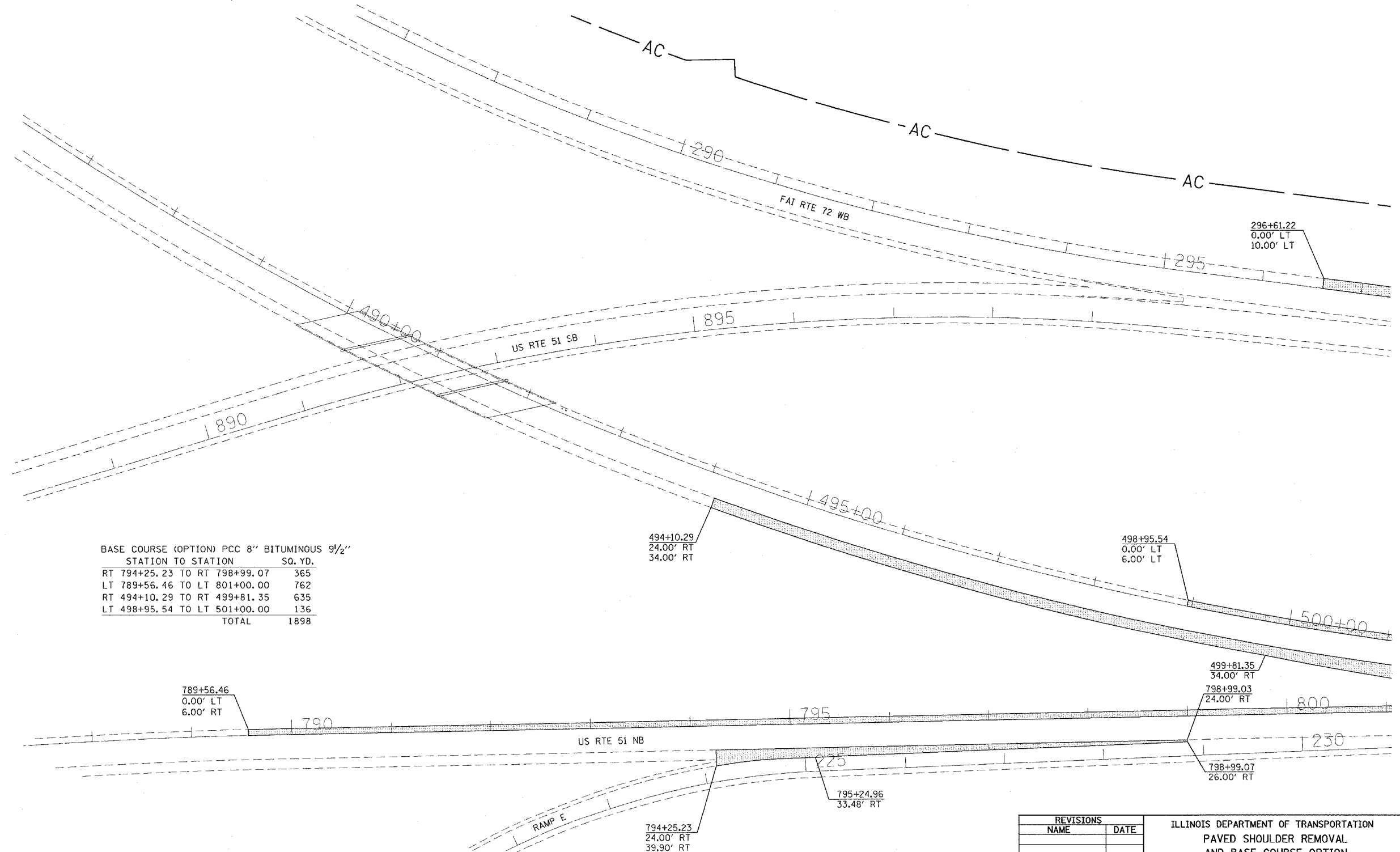


F.A.I. RTE.	SECTION	COUNTY	TOTAL SHEETS	SHEET NO.
72		MACON	135	48
STA. 483+00		TO STA. 501+00		
FED. ROAD DIST. NO.		ILLINOIS FED. AID PROJECT		

• (58-62,58-62-1,58-63)RS
CONTRACT NO. 90879

PAVED SHOULDER REMOVAL AND BASE COURSE OPTION

STRUCTURE NUMBER 058-0068 W.B. & 058-0069 E.B.
STRUCTURE NUMBER 058-0070 W.B. & 058-0071 E.B.



PAVED SHOULDER REMOVAL		
STATION TO STATION	SQ. YD.	
RT 794+25.23 TO RT 798+99.07	365	
LT 789+56.46 TO LT 801+00.00	762	
RT 494+10.29 TO RT 499+81.35	635	
LT 498+95.54 TO LT 501+00.00	136	
TOTAL	1898	

BASE COURSE (OPTION) PCC 8" BITUMINOUS 9/2"		
STATION TO STATION	SQ. YD.	
RT 794+25.23 TO RT 798+99.07	365	
LT 789+56.46 TO LT 801+00.00	762	
RT 494+10.29 TO RT 499+81.35	635	
LT 498+95.54 TO LT 501+00.00	136	
TOTAL	1898	

REVISIONS	
NAME	DATE

ILLINOIS DEPARTMENT OF TRANSPORTATION
PAVED SHOULDER REMOVAL
AND BASE COURSE OPTION
F.A.I. ROUTE 72
SECTION (58-62,58-62-1,58-63)RS
MACON COUNTY

SCALE: VERT. 1" = 50'
HORIZ. DATE 10/22/03

DRAWN BY CADD
CHECKED BY