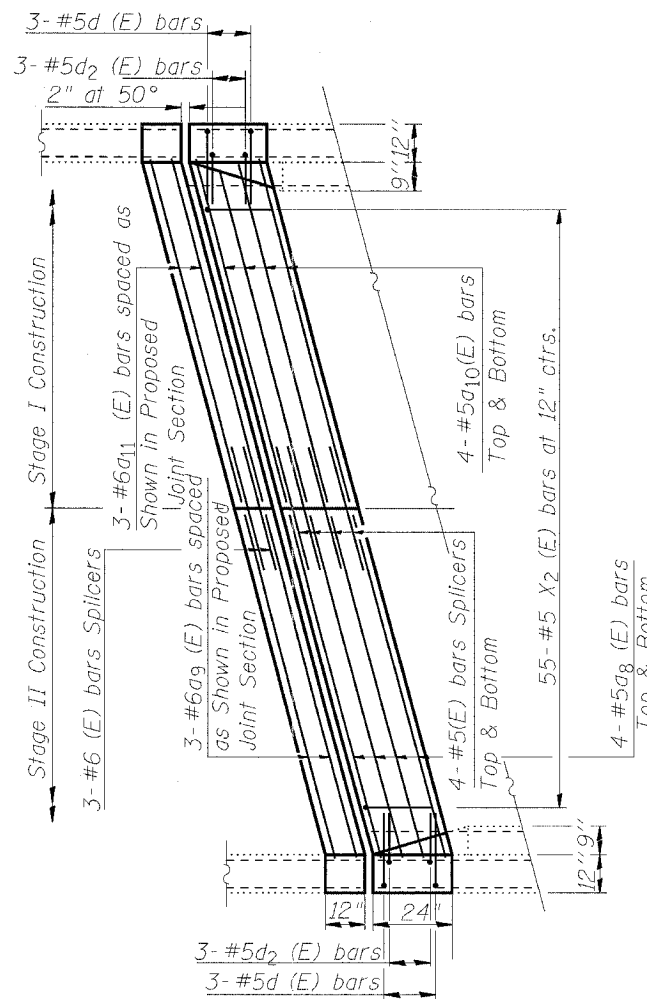


EXISTING PARTIAL PLAN
 JOINT AT SOUTH ABUTMENT



PROPOSED PARTIAL PLAN
 JOINT AT SOUTH ABUTMENT

BILL OF MATERIAL

Bar	No.	Size	Length	Shape
a ₈ (E)	8	#5	33'-0"	—
a ₉ (E)	3	#6	33'-0"	—
a ₁₀ (E)	8	#5	32'-3"	—
a ₁₁ (E)	3	#6	32'-3"	—
d(E)	6	#5	4'-7"	┌
d ₂ (E)	6	#5	4'-2"	└
x ₂ (E)	63	#5	2'-2"	└
Reinforcement Bars, Epoxy Coated			Pound	1040
Concrete Superstructure			Cu. Yd.	10.0

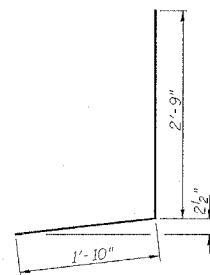
Reinforcement bars designated (E) shall be epoxy coated.

Hatched area indicates Concrete Removal.

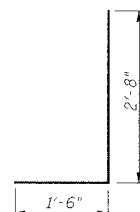
I.F. = Inside Face

O.F. = Outside Face

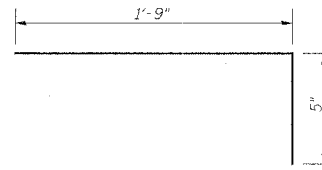
See Sheet 10 of 16 for Section Thru Parapet and Proposed Joint Section



BAR d(E)



BAR d₂(E)



BARS x₂(E)

JOINT REPAIR AT SOUTH ABUTMENT
 F.A.I. ROUTE 72 SEC. 58-63HVB
 MACON COUNTY
 S.N. 058-0075