

STATE OF ILLINOIS
DEPARTMENT OF TRANSPORTATION

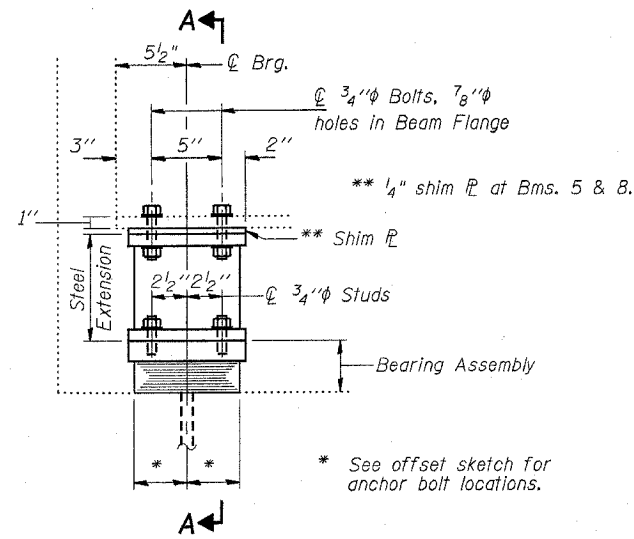
GIRDER REACTIONS

R2	(K)	25.1
R3	(K)	27.1
Imo.	(K)	10.5
R (Total)	(K)	72.6

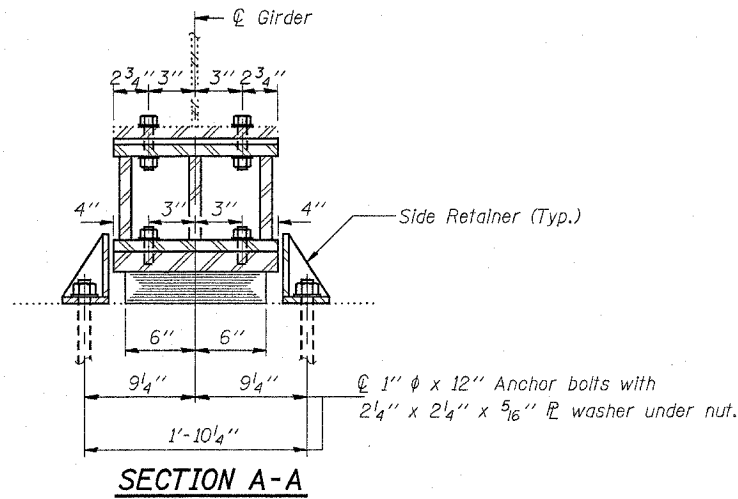
ROUTE NO.	SECTION	COUNTY	TOTAL SHEETS	SHEET NO.
FAP 320		MACON	51	44
FED. ROAD DIST. NO. 7	ILLINOIS	FED. AID PROJECT		

(126X)RS-1&135[(R)RS&(BR-1)BR]
CONTRACT NO. 90926

SHEET 7 OF 10

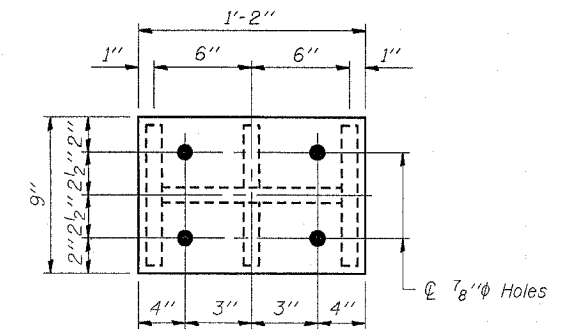


ELEVATION AT EAST ABUTMENT



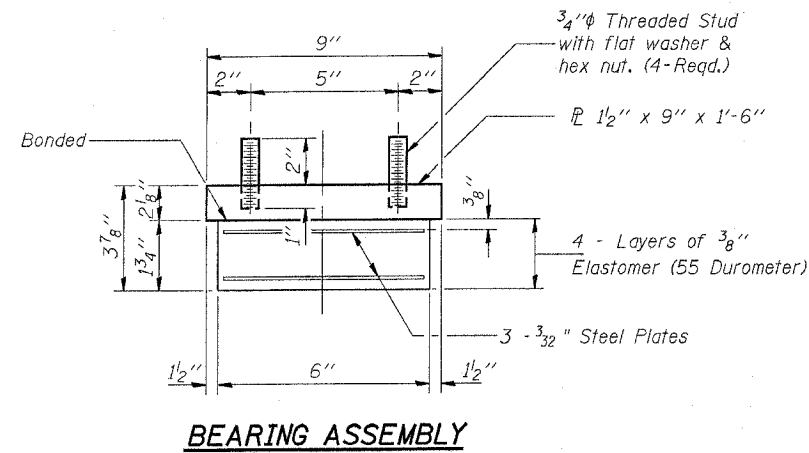
SECTION A-A

Notes: Diaphragm removal and reinstallation may be required to facilitate drilling holes. Cost shall be included in the cost of Furnishing and Erecting Structural Steel.
New steel extensions, side retainers, shim PL's, connection bolts, and anchor bolts are included in Furnishing and Erecting Structural Steel.
See Sheet 9 of 10 for Anchor Bolt Installation.
Prior to ordering any material, the Contractor shall verify in the field all bearing height and shim thickness dimensions.
Min. Jack capacity = 40 Tons.



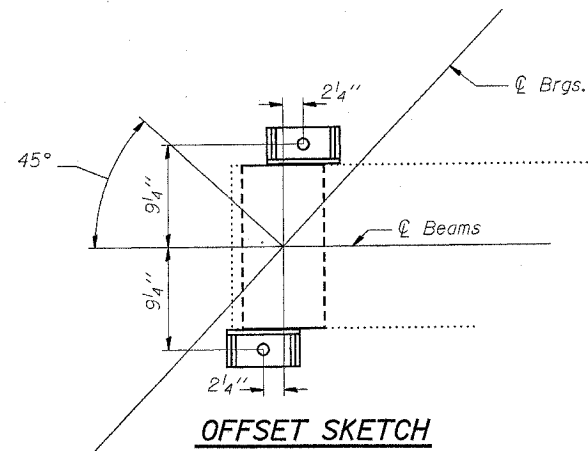
PLAN TOP AND BOTTOM PLATE

TYPE I ELASTOMERIC EXP. BRG.

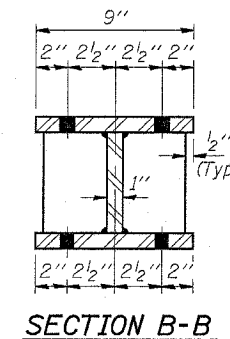


BEARING ASSEMBLY

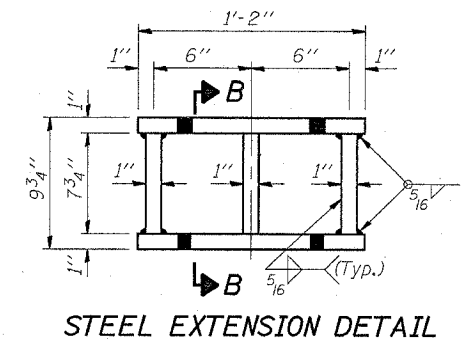
Note: Shim plates shall not be placed under Bearing Assembly.



OFFSET SKETCH



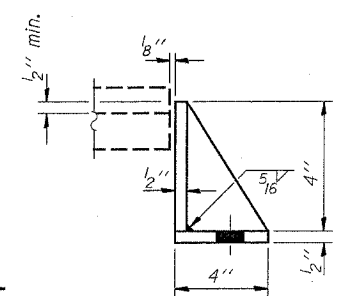
SECTION B-B



STEEL EXTENSION DETAIL

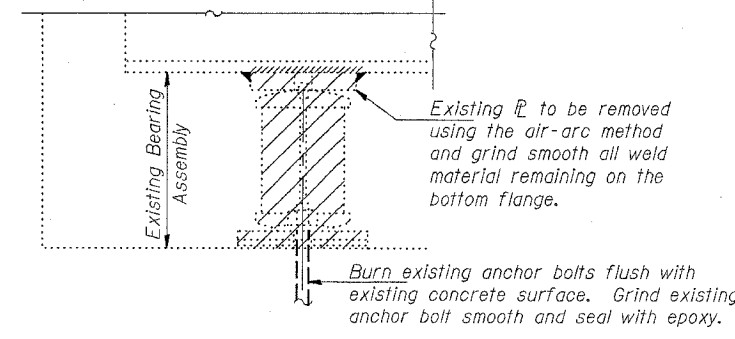
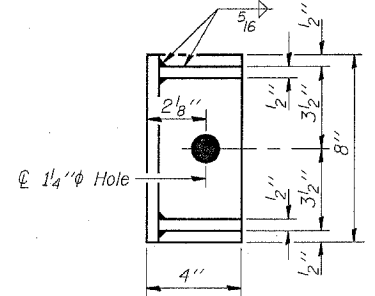
BILL OF MATERIAL

Item	Unit	Total
Elastomeric Bearing Assembly Type I	Each	12
Jack and Remove Existing Bearing	Each	12
Furnishing and Erecting Structural Steel	Pounds	2080



SIDE RETAINER

Equivalent rolled angle with stiffeners will be allowed in lieu of welded plates.



EXISTING BEARING REMOVAL DETAIL

Cost shall be included with Jack and Remove Existing Bearings

DESIGNED	Victor H. Veliz
CHECKED	
DRAWN	VHV
CHECKED	

EXAMINED	20
PASSED	ENGINEER OF STRUCTURAL SERVICES
	ENGINEER OF BRIDGES AND STRUCTURES

EAST ABUTMENT
SN. 058-0050