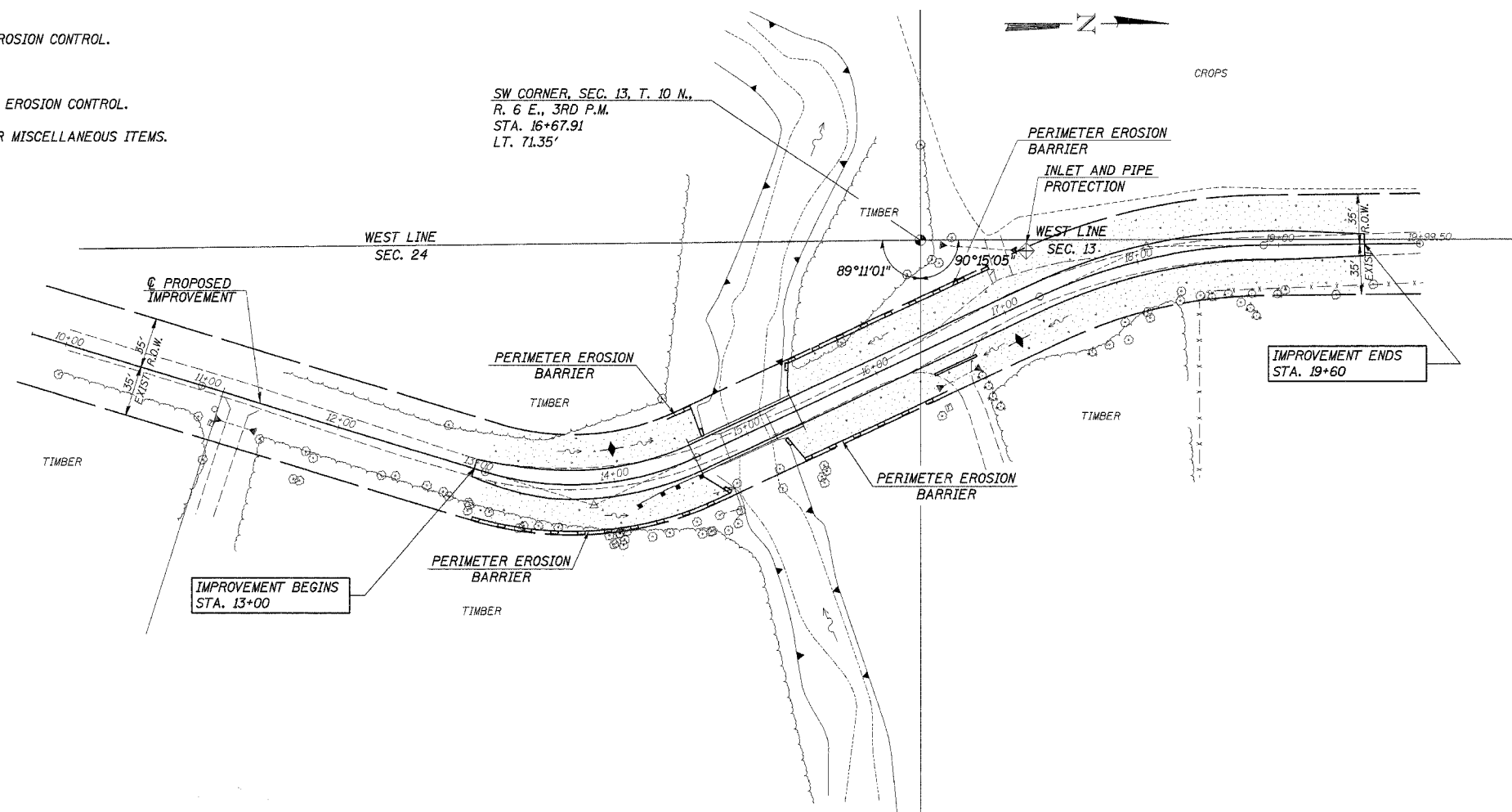


DESCRIPTION OF INTENDED SEQUENCE OF MAJOR CONSTRUCTION ACTIVITIES WHICH WILL DISTURB EARTH AND LEAD TO POSSIBLE EROSION FOR MAJOR PORTIONS OF THE CONSTRUCTION SITE:

1. PLACEMENT OF PERIMETER EROSION CONTROL FENCE PRIOR TO THE COMMENCEMENT OF ANY ROAD OR BRIDGE WORK. SEE STD. 28000L.
2. REMOVAL OF EXISTING STRUCTURE.
3. CONSTRUCTION OF THE REPLACEMENT STRUCTURE.
4. PLACEMENT OF ROADWAY EMBANKMENT TO RAISE THE ROADWAY TO THE PROPOSED GRADE.
5. DRAINAGE STRUCTURES, INCLUDING DITCHES, WILL BE INSTALLED BEFORE AND/OR DURING THE COMPLETION OF THE EMBANKMENT.
6. PLACEMENT AND MAINTENANCE OF TEMPORARY EROSION CONTROL.
7. PLACEMENT OF PERMANENT EROSION CONTROL.
8. REMOVAL AND PROPER CLEAN UP OF TEMPORARY EROSION CONTROL.
9. FINAL GRADING, PLACING AGGREGATE AND OTHER MISCELLANEOUS ITEMS.



TEMPORARY DITCH CHECKS

LT. STA. 14+00	=	1 EACH
RT. STA. 17+00	=	1
TOTAL	=	2 EACH

PERIMETER EROSION BARRIER

LT. STA. 14+50 TO STA. 17+10	=	260 FOOT
RT. STA. 13+00 TO STA. 16+36	=	336
TOTAL	=	596 FOOT

INLET AND PIPE PROTECTION

35' LT. STA. 17+30	=	1 EACH
--------------------	---	--------

TEMPORARY EROSION CONTROL:	
	PERIMETER EROSION BARRIER
	INLET & PIPE PROTECTION
	TEMPORARY DITCH CHECK
PERMANENT EROSION CONTROL:	
	SEEDING CLASS 2, FERTILIZERS, & MULCH, METHOD 2

BILL OF MATERIAL

ITEM	UNIT	QUANTITY
TEMPORARY DITCH CHECKS	EACH	2
PERIMETER EROSION BARRIER	FOOT	596
TEMPORARY EROSION CONTROL SEEDINGS	POUND	60
INLET AND PIPE PROTECTION	EACH	1

SEE SPECIAL PROVISIONS Page 29-39

EROSION CONTROL PLAN
 SECTION 98-02117-00-BR
 BIG SPRING ROAD DISTRICT
 SHELBY COUNTY
 STATION 14+99

4440 ASH GROVE
 SPRINGFIELD, IL 62707
 (217) 793-8600
 oasinc@famvid.com

OZY AND STONE, INC.
 CONSULTING ENGINEERS

JOB NO.: 9834
 FILE: Erosionpln.dgn
 DATE: 12-01-03