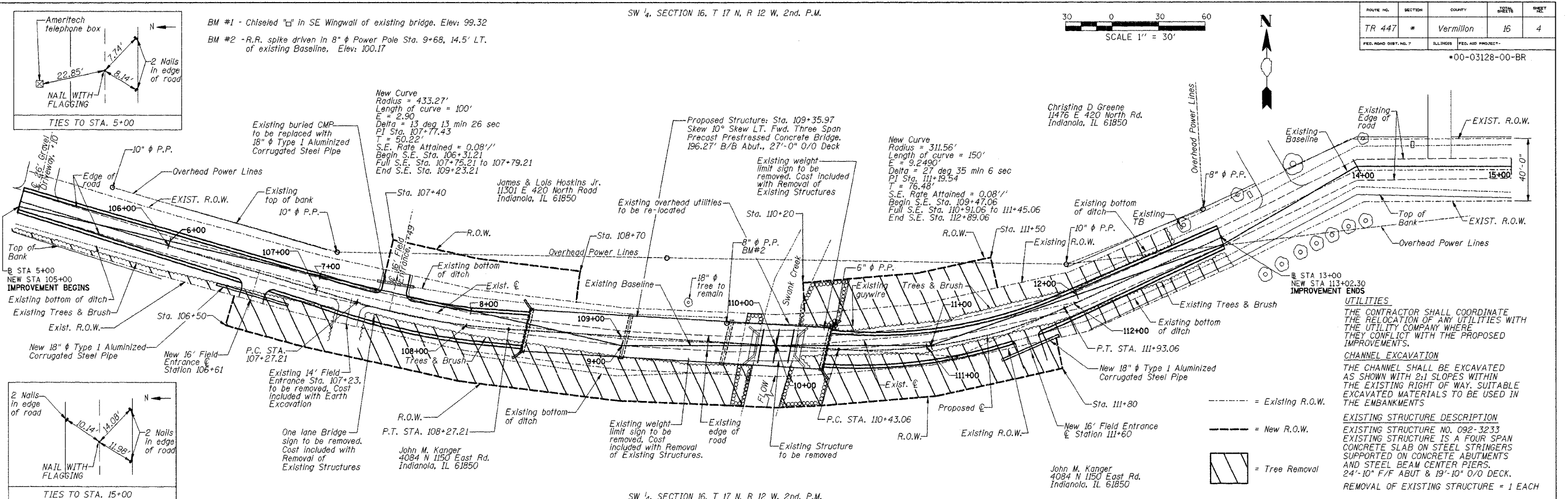
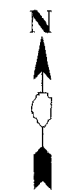
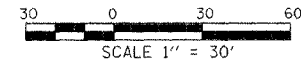


ROUTE NO.	SECTION	COUNTY	TOTAL SHEETS	SHEET NO.
TR 447	*	Vermillion	16	4

FED. ROAD DIST. NO. 7 ILLINOIS FED. AID PROJECT - \*00-03128-00-BR

SW 1/4, SECTION 16, T 17 N, R 12 W, 2nd. P.M.

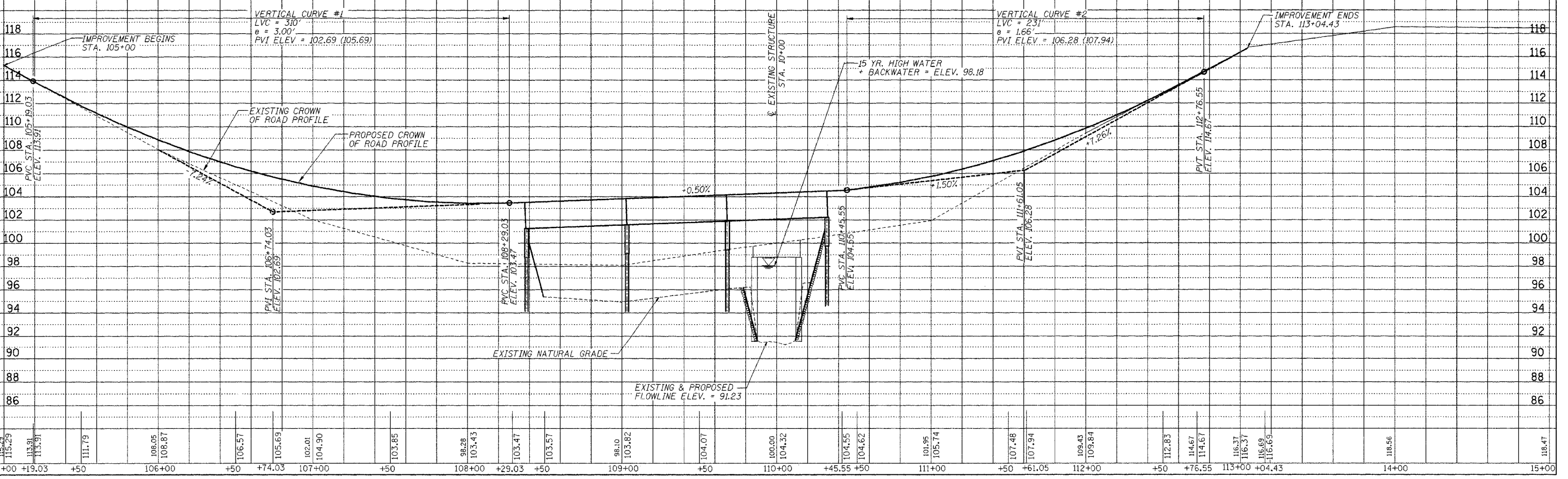


**UTILITIES**  
THE CONTRACTOR SHALL COORDINATE THE RELOCATION OF ANY UTILITIES WITH THE UTILITY COMPANY WHERE THEY CONFLICT WITH THE PROPOSED IMPROVEMENTS.

**CHANNEL EXCAVATION**  
THE CHANNEL SHALL BE EXCAVATED AS SHOWN WITH 2:1 SLOPES WITHIN THE EXISTING RIGHT OF WAY. SUITABLE EXCAVATED MATERIALS TO BE USED IN THE EMBANKMENTS

**EXISTING STRUCTURE DESCRIPTION**  
EXISTING STRUCTURE NO. 092-3233  
EXISTING STRUCTURE IS A FOUR SPAN CONCRETE SLAB ON STEEL STRINGERS SUPPORTED ON CONCRETE ABUTMENTS AND STEEL BEAM CENTER PIERS.  
24'-10" F/F ABUT & 19'-10" O/O DECK.  
REMOVAL OF EXISTING STRUCTURE = 1 EACH

SW 1/4, SECTION 16, T 17 N, R 12 W, 2nd. P.M.



PLAN & PROFILE STA. 5+00 TO STA. 15+00