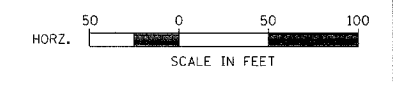
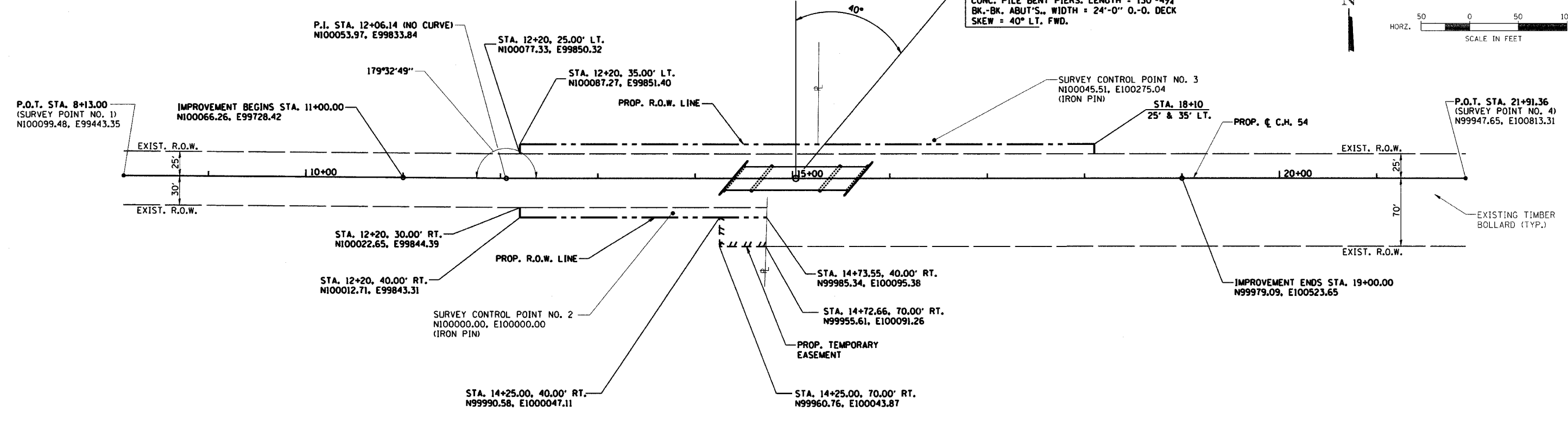


RTE.	SECTION	COUNTY	TOTAL SHEETS	SHEET NO.
C.H. 54	03-00177-00-BR	MACON	16	4
STA. 8+13.00		TO STA. 21+91.36		
FED. ROAD DIST. NO.	ILLINOIS	PROJECT		

CONTRACT NO. 91317



STA. 15+03.44, SPECIAL BRIDGE DESIGN, THREE SPAN PPC DECK BEAM BRIDGE, SPANS OF 27'-5 3/4", 68'-5 3/4" & 27'-5 3/4" ON CONC. PILE BENT ABUT'S. AND CONC. PILE BENT PIERS. LENGTH = 130'-4 3/4" BK.-BK. ABUT'S., WIDTH = 24'-0" O.-O. DECK SKEW = 40° LT. FWD.



PROPOSED STRUCTURE LAYOUT

<p>WEST ABUTMENT BK. OF W. ABUT. STA. 14+38.24 N100028.92, E100064.59 C. W. ABUT. STA. 14+39.88 N100028.74, E100066.21 FACE OF W. ABUT. STA. 14+41.52 N100028.57, E100067.84</p>	<p>PIER 1 C. PIER 1 STA. 14+68.38 N100025.67, E100094.56</p>	<p>PIER 2 C. PIER 2 STA. 15+38.50 N100018.10, E100164.27</p>	<p>EAST ABUTMENT BK. OF E. ABUT. STA. 15+68.64 N100014.85, E100194.23 C. E. ABUT. STA. 15+67.00 N100015.02, E100192.61 FACE OF E. ABUT. STA. 15+65.36 N100015.20, E100190.99</p>
---	---	---	---

NOTE:
 FOR TIE POINTS AND BENCHMARK LOCATION,
 SEE SHEET 3 OF 16.