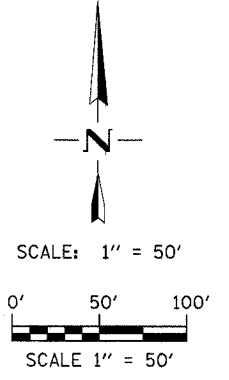
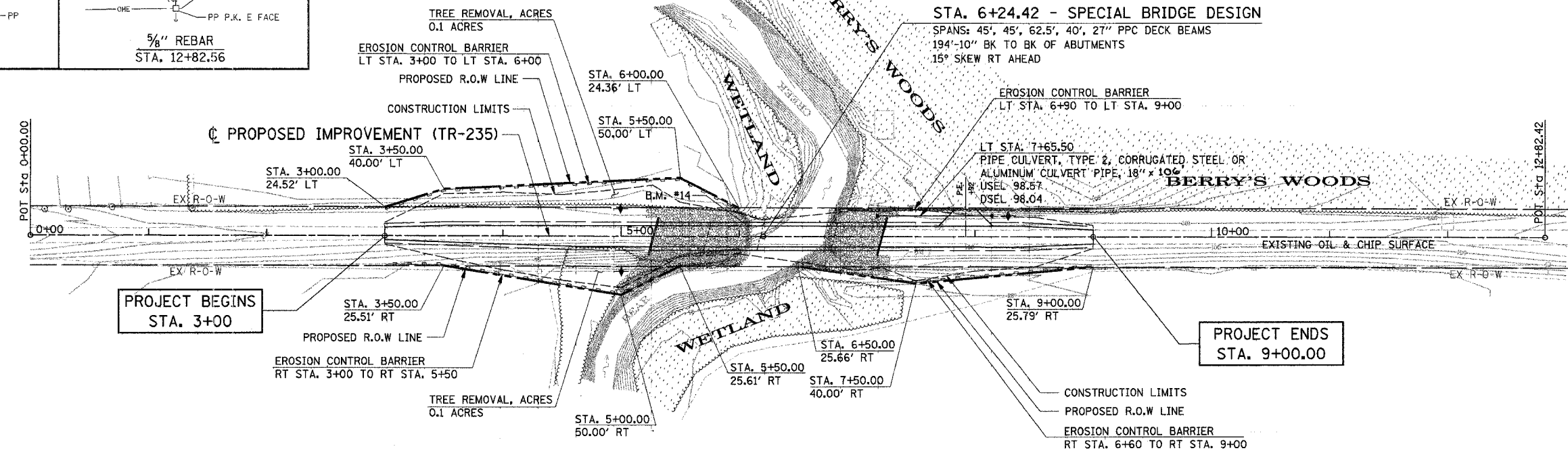
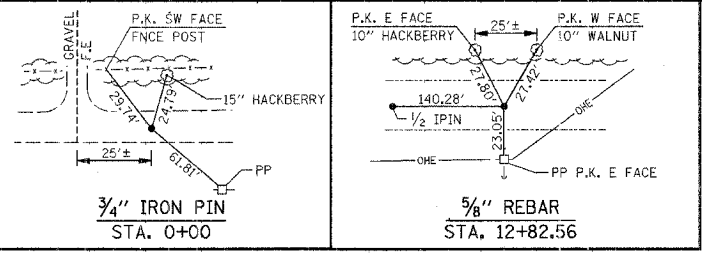


| | | | | |
|---------------------|----------------|-----------|------------------|-----------|
| T.R. | SECTION | COUNTY | TOTAL SHEETS | SHEET NO. |
| 235 | 93-02109-00-BR | CHRISTIAN | 18 | 5 |
| STA. | | TO STA. | | |
| FED. ROAD DIST. NO. | | ILLINOIS | FED. AID PROJECT | |

SE 1/4, SE 1/4, SEC 16, T 12 N, R 3 W, 3rd PM

BETTE L. BERRY

BETTE L. BERRY



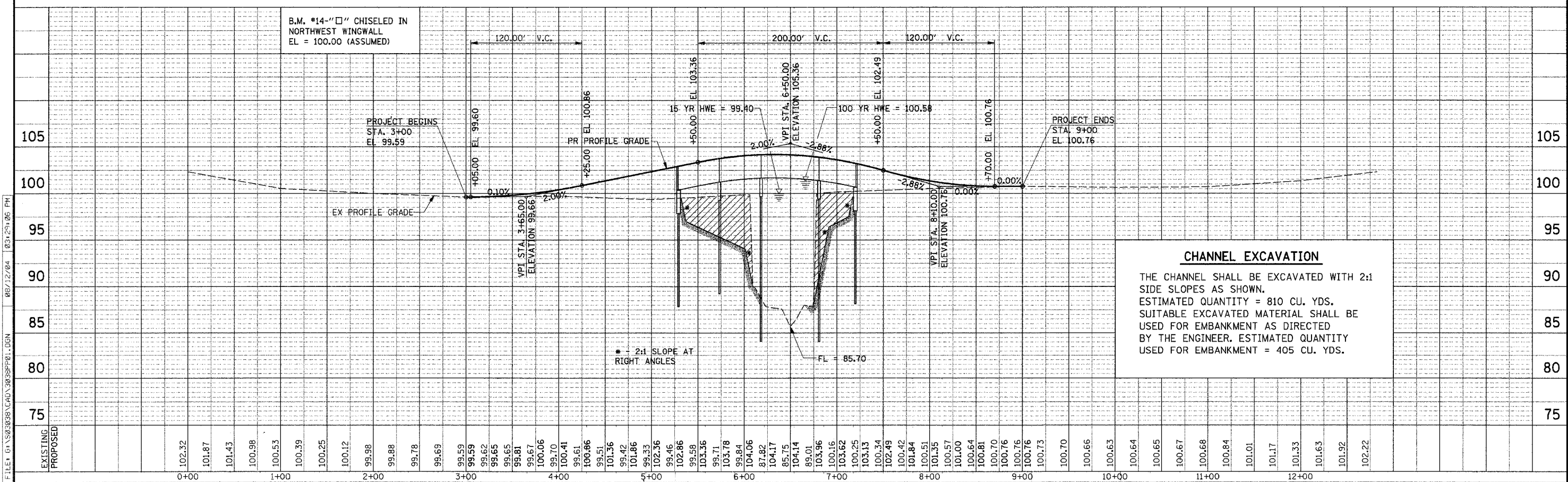
- LEGEND**
- PROTECTED AREA (DO NOT DISTURB)
 - RIPRAP
 - CHANNEL EXCAVATION
 - EROSION BARRIER
 - TEMPORARY DITCH CHECK

TRANSITION FROM EX RDWY SEC AT STA 3+00 RT TO PR RDWY SEC AT STA 4+65 RT AND FROM EX RDWY SEC STA 3+00 TO PR RDWY SEC AT STA 3+55 LT

TRANSITION FROM PR RDWY SEC AT STA 8+40 TO EX RDWY SEC AT STA 9+00

DORIS H. WILCOX, TRUSTEE

NE 1/4, NE 1/4, SEC 21, T 12 N, R 3 W, 3rd PM



PLAN & PROFILE - T.R. 235 STA. 3+00 TO STA. 9+00