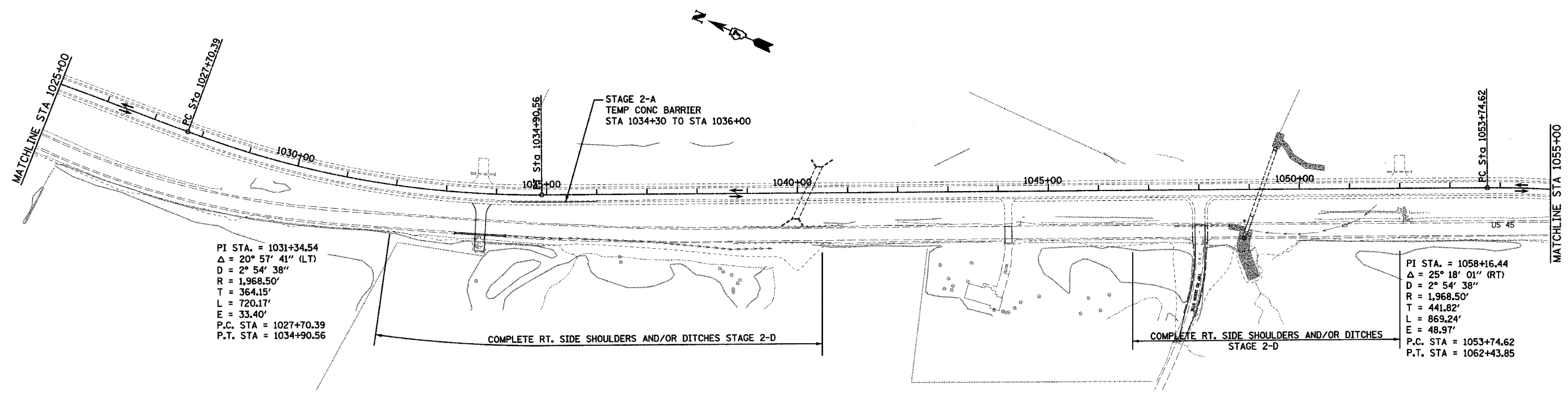
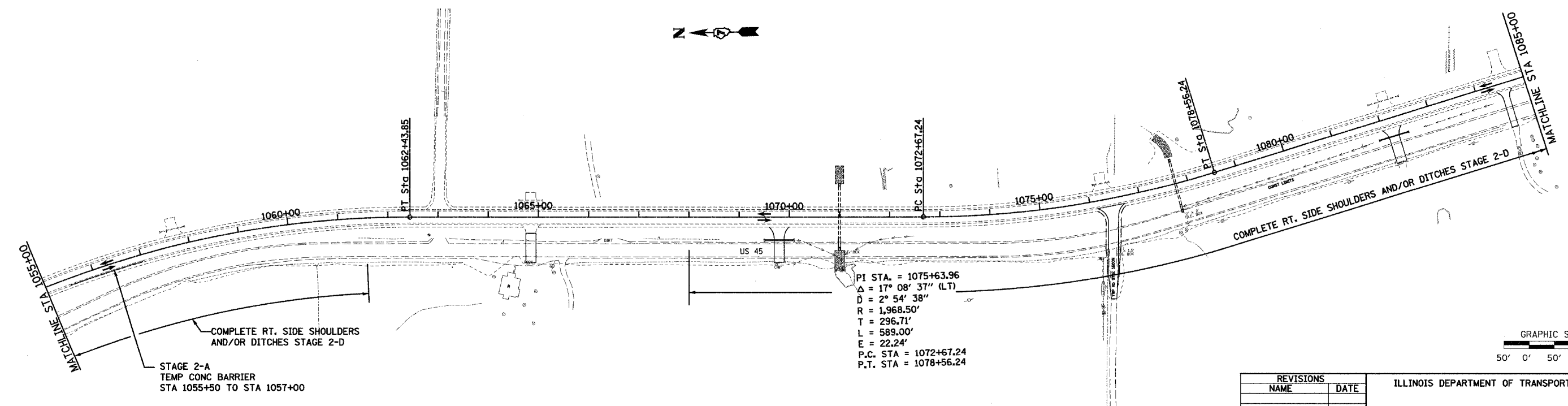


F.A.P. RTE.	SECTION	COUNTY	TOTAL SHEETS	SHEET NO.
328	5R, Y, RS-1	CLAY	376	25
STA.		TO STA.		
FED. ROAD DIST. NO. 7		ILLINOIS FED. AID PROJECT		
CONTRACT No 94367				



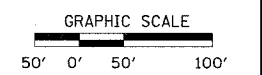
PI STA. = 1031+34.54
 $\Delta = 20^\circ 57' 41''$ (LT)
 $D = 2^\circ 54' 38''$
 $R = 1,968.50'$
 $T = 364.15'$
 $L = 720.17'$
 $E = 33.40'$
 P.C. STA = 1027+70.39
 P.T. STA = 1034+90.56

PI STA. = 1058+16.44
 $\Delta = 25^\circ 18' 01''$ (RT)
 $D = 2^\circ 54' 38''$
 $R = 1,968.50'$
 $T = 441.82'$
 $L = 869.24'$
 $E = 48.97'$
 P.C. STA = 1053+74.62
 P.T. STA = 1062+43.85



STAGE 2-A
 TEMP CONC BARRIER
 STA 1055+50 TO STA 1057+00

PI STA. = 1075+63.96
 $\Delta = 17^\circ 08' 37''$ (LT)
 $D = 2^\circ 54' 38''$
 $R = 1,968.50'$
 $T = 296.71'$
 $L = 589.00'$
 $E = 22.24'$
 P.C. STA = 1072+67.24
 P.T. STA = 1078+56.24



REVISIONS	
NAME	DATE

ILLINOIS DEPARTMENT OF TRANSPORTATION

STAGE 2 CONSTRUCTION

SCALE: VERT.
HORIZ.
DATE: 12/14/04

DRAWN BY: JJC
CHECKED BY: MAR