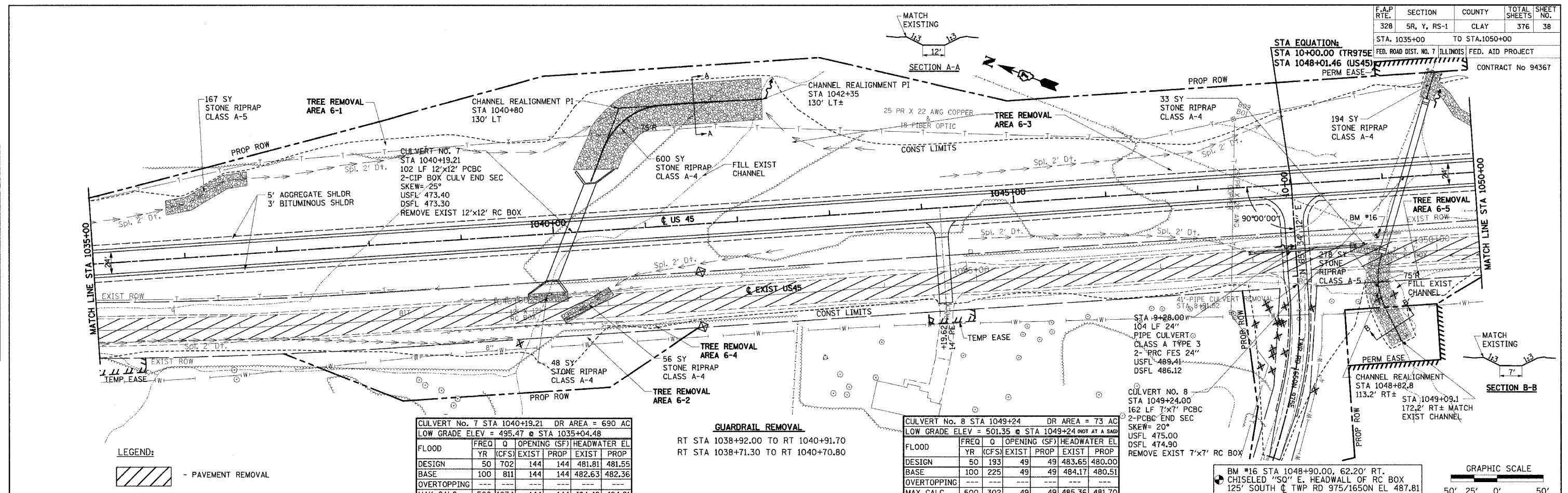


F.A.P. RTE.	SECTION	COUNTY	TOTAL SHEETS	SHEET NO.
328	5R, Y, RS-1	CLAY	376	38

STA. 1035+00 TO STA. 1050+00
 FED. ROAD DIST. NO. 7 ILLINOIS
 CONTRACT No 94367

DATE	BY	REVISION
06/09		

PLAN	DATE	BY	REVISION



CULVERT No. 7 STA 1040+19.21 DR AREA = 690 AC
 LOW GRADE ELEV = 495.47 @ STA 1035+04.48

FLOOD	FREQ	Q	OPENING (SF)	HEADWATER EL		
	YR	(CFS)	EXIST	PROP	EXIST	PROP
DESIGN	50	702	144	144	481.81	481.55
BASE	100	811	144	144	482.63	482.36
OVERTOPPING	---	---	---	---	---	---
MAX CALC	500	1074	144	144	484.49	484.21

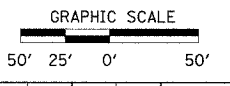
GUARDRAIL REMOVAL
 RT STA 1038+92.00 TO RT 1040+91.70
 RT STA 1038+71.30 TO RT 1040+70.80

CULVERT No. 8 STA 1049+24 DR AREA = 73 AC
 LOW GRADE ELEV = 501.35 @ STA 1049+24 (NOT AT A SAG)

FLOOD	FREQ	Q	OPENING (SF)	HEADWATER EL		
	YR	(CFS)	EXIST	PROP	EXIST	PROP
DESIGN	50	193	49	49	483.65	480.00
BASE	100	225	49	49	484.17	480.51
OVERTOPPING	---	---	---	---	---	---
MAX CALC	500	302	49	49	485.36	481.70

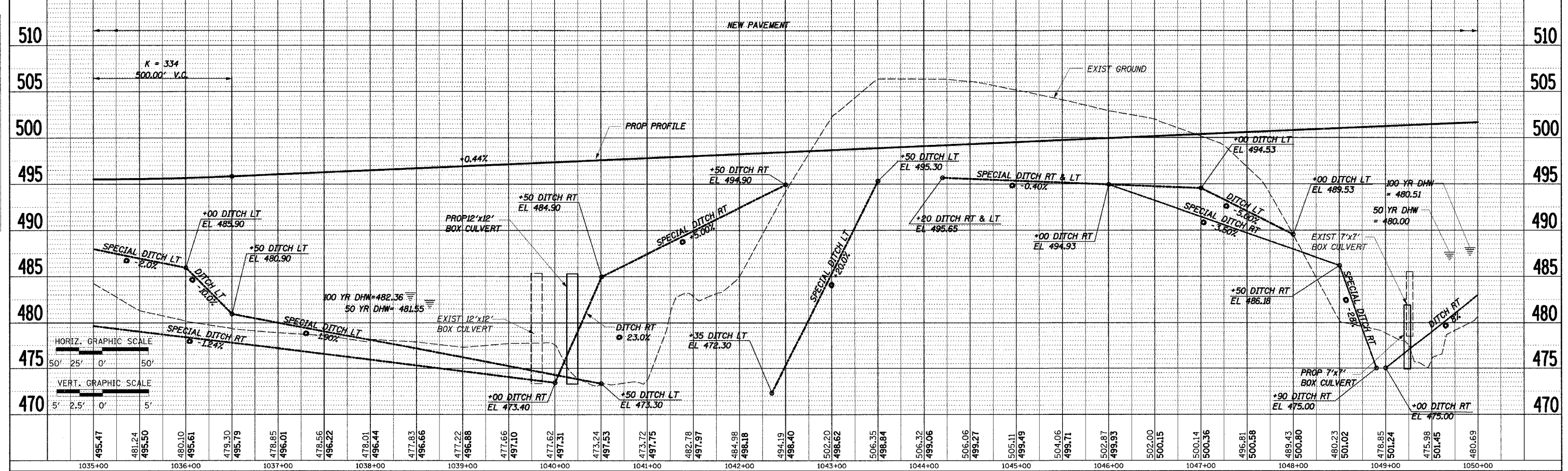
LEGEND:
 - PAVEMENT REMOVAL

BM #16 STA 1048+90.00, 62.20' RT.
 CHISELED "SO" E. HEADWALL OF RC BOX
 125' SOUTH @ TWP RD 975/1650N EL 487.81



DATE	BY	REVISION

PROFILE	DATE	BY	REVISION



STA 1035+00 TO STA 1050+00