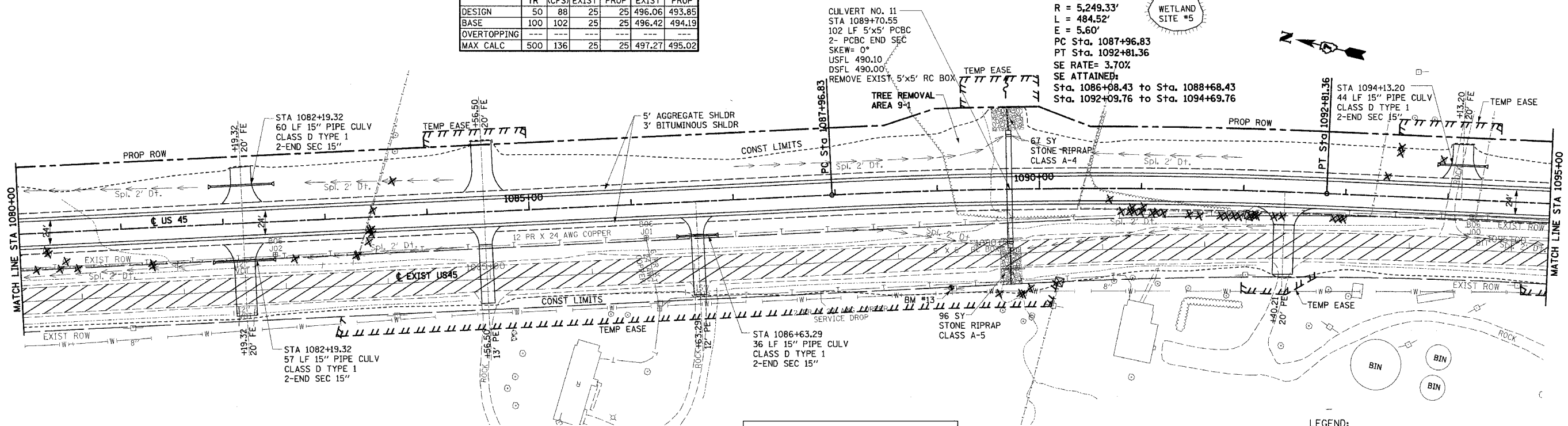


F.A.P. RTE.	SECTION	COUNTY	TOTAL SHEETS	SHEET NO.
328	5R, Y, RS-1	CLAY	376	41
STA. 1080+00 TO STA. 1095+00				
FED. ROAD DIST. NO. 7 ILLINOIS		FED. AID PROJECT		
CONTRACT No 94367				

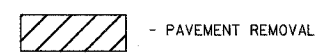
CULVERT No. 11 STA 1089+70.55 DR AREA = 33 AC						
LOW GRADE ELEV = 503.85 @ STA 1089+70 (NOT AT A SAG)						
FLOOD	FREQ	Q	OPENING (SF)	HEADWATER EL		
	YR	(CFS)	EXIST	PROP	EXIST	PROP
DESIGN	50	88	25	25	496.06	493.85
BASE	100	102	25	25	496.42	494.19
OVERTOPPING	---	---	---	---	---	---
MAX CALC	500	136	25	25	497.27	495.02

FAP RTE 328 (US45)
 PI Sta. 1090+39.27
 $\Delta = 5^\circ 17' 19''$ (RT)
 $D = 1^\circ 05' 29''$
 $T = 242.43'$
 $R = 5,249.33'$
 $L = 484.52'$
 $E = 5.60'$
 PC Sta. 1087+96.83
 PT Sta. 1092+81.36
 SE RATE = 3.70%
 SE ATTAINED:
 Sta. 1086+08.43 to Sta. 1088+68.43
 Sta. 1092+09.76 to Sta. 1094+69.76

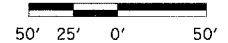


BM #13 STA 1089+11.00, 95.00' RT.
 RR SPIKE IN POWER POLE W.
 RTE 45 EL 500.06

LEGEND:

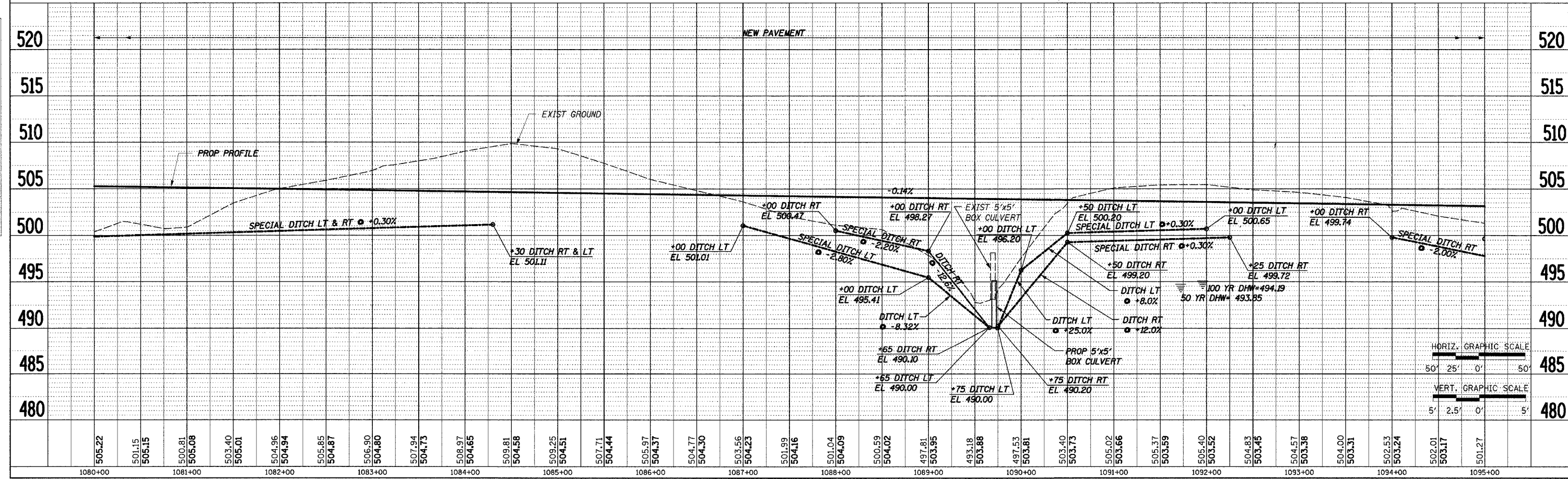


GRAPHIC SCALE

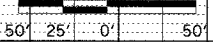


PLAN	DATE	BY
SURVEYED		
NOTED		
CHECKED		
DESIGNED		
IN CHARGE		

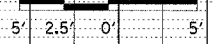
PROFILE	DATE	BY
SURVEYED		
NOTED		
CHECKED		
DESIGNED		
IN CHARGE		



HORIZ. GRAPHIC SCALE



VERT. GRAPHIC SCALE



STA 1080+00 TO STA 1095+00

\\s024-jrcad\out\081010\081010.dwg 12/14/2004 7:34:51 AM