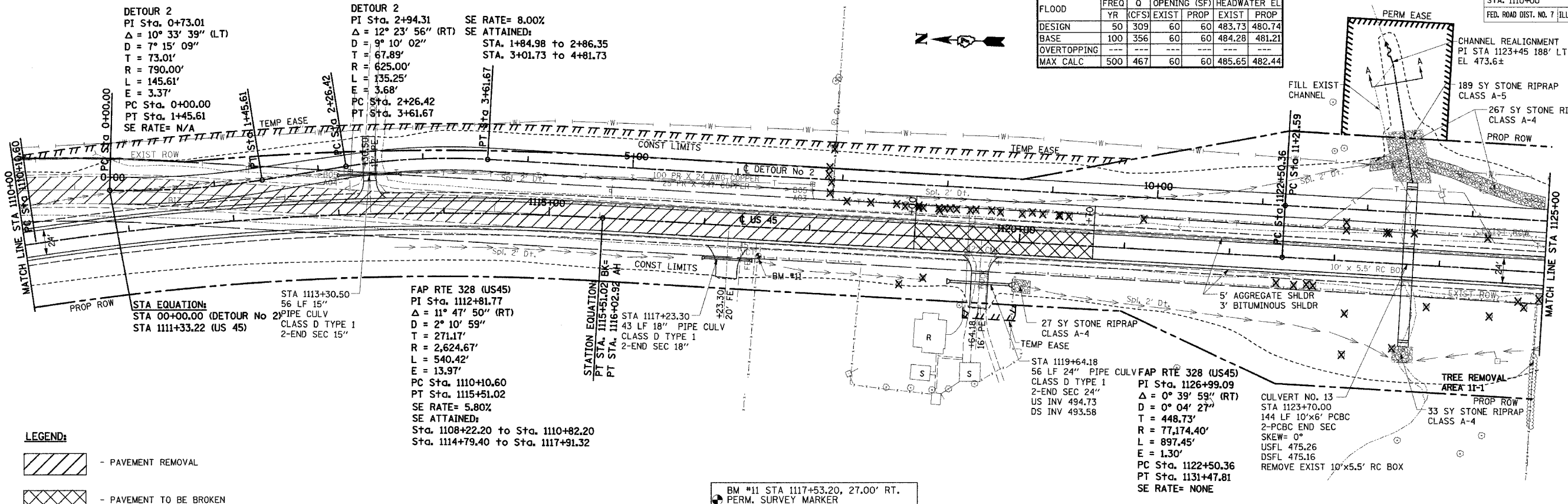


DATE	BY	CHECKED

DATE	BY	CHECKED

CULVERT No. 13 STA 1123+70		DR AREA = 300 AC	
LOW GRADE ELEV = 499.64 @ STA 1123+70 (NOT AT A SAG)			
FLOOD	FREQ	O	OPENING (SF)
DESIGN	50	309	60
BASE	100	356	60
OVERTOPPING	---	---	---
MAX CALC	500	467	60

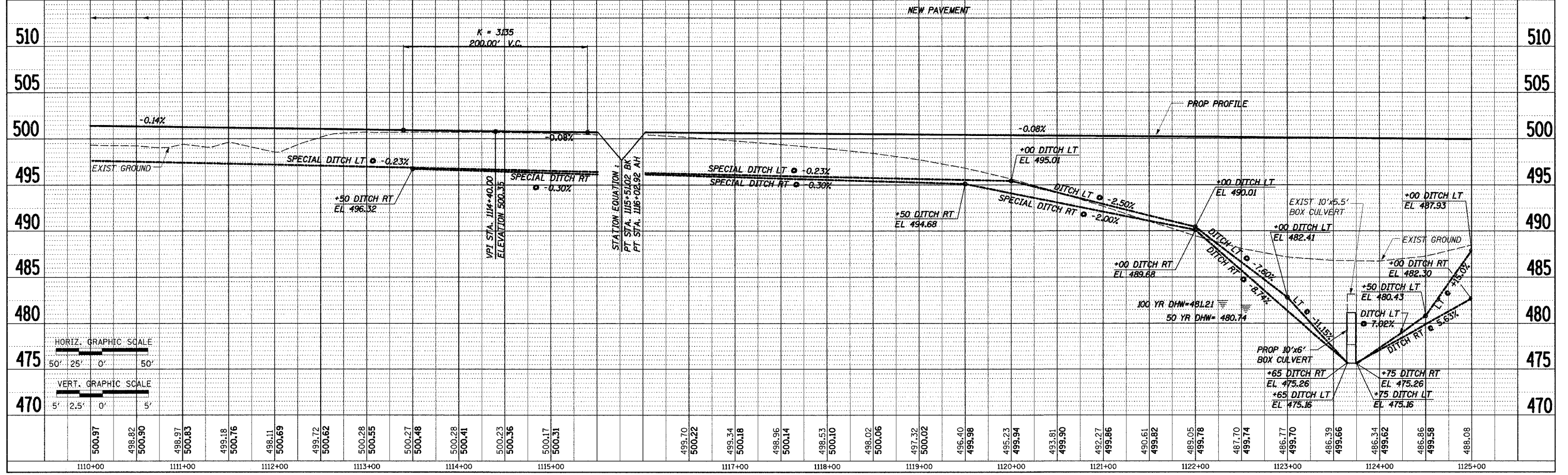
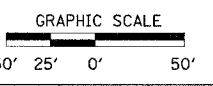
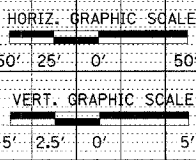
F.A.P. RTE.	SECTION	COUNTY	TOTAL SHEETS	SHEET NO.
328	SR, Y, RS-1	CLAY	376	43
STA. 1110+00 TO STA. 1125+00				
FED. ROAD DIST. NO. 7 ILLINOIS FED. AID PROJECT				
CONTRACT No 94367				



LEGEND:

- PAVEMENT REMOVAL
- PAVEMENT TO BE BROKEN

BM #11 STA 1117+53.20, 27.00' RT.
 PERM. SURVEY MARKER
 EL 499.34



STA 1100+00 TO STA 1125+00

I:\PROJECTS\2004\07\06\94367\94367.dwg 12/14/2004 7:06:35 AM