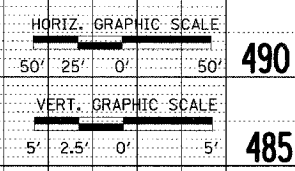
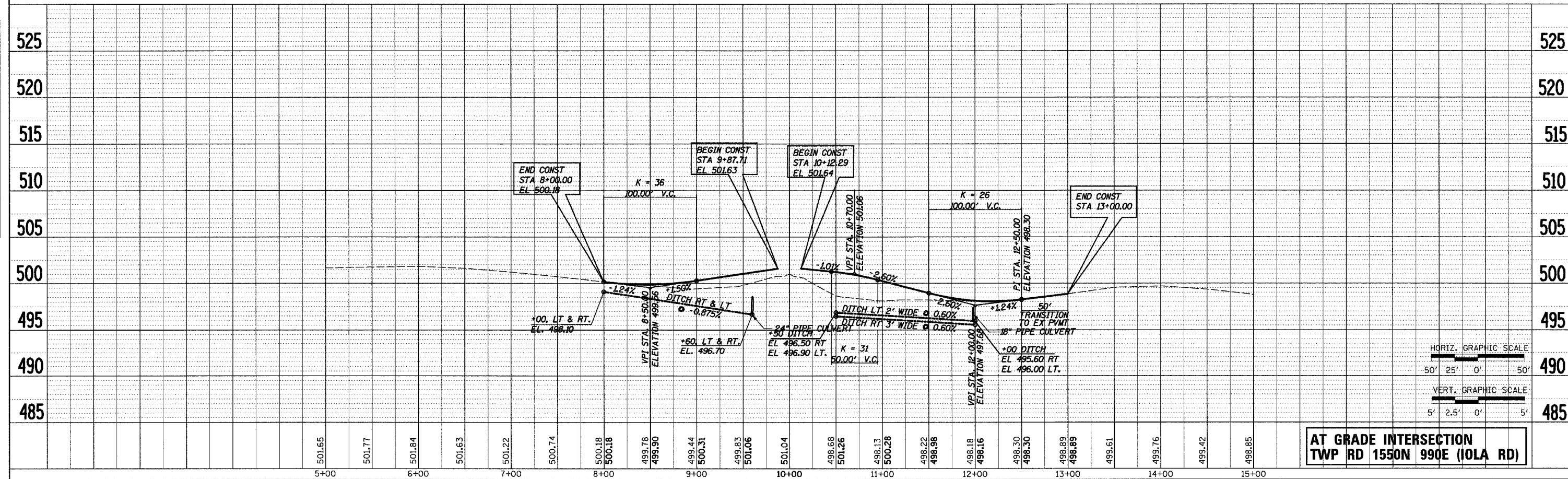
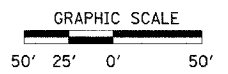
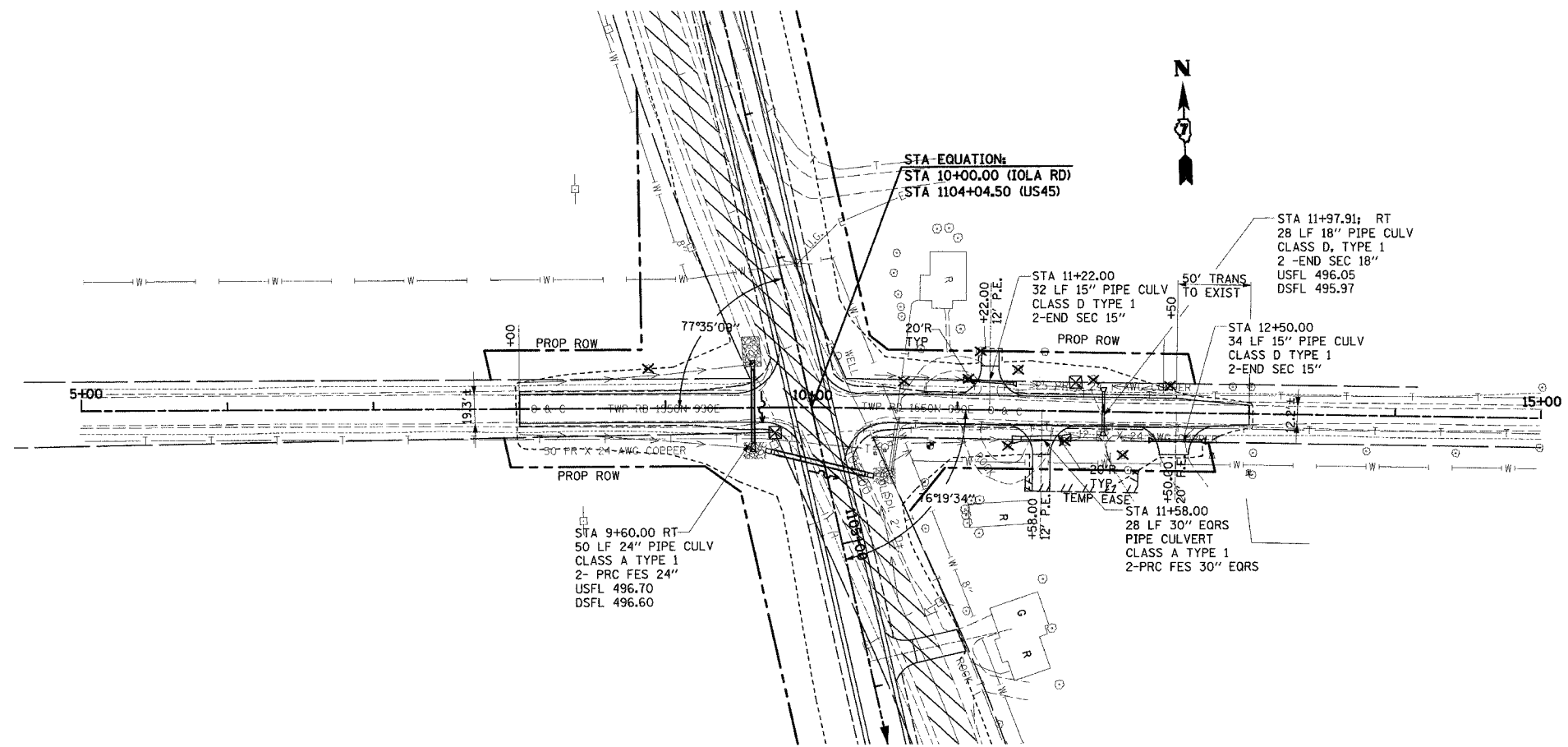


F.A.P. RTE.	SECTION	COUNTY	TOTAL SHEETS	SHEET NO.
328	5R, Y, RS-1	CLAY	376	49
STA. TO STA.		FED. ROAD DIST. NO. 7 ILLINOIS FED. AID PROJECT		
CONTRACT No 94367				

DATE	BY	BY
PLAN	SURVEYED	CHECKED
	NOTE BOOK	ALIGNMENT
		FILE NAME
		NO.

DATE	BY	BY
PROFILE	SURVEYED	CHECKED
	NOTE BOOK	GRADES
		NOTED
		STATUS
		NO.



**AT GRADE INTERSECTION
TWP RD 1550N 990E (IOLA RD)**

T.R. 990E 1550N (IOLA ROAD)

12/14/2004 7:08:51 AM