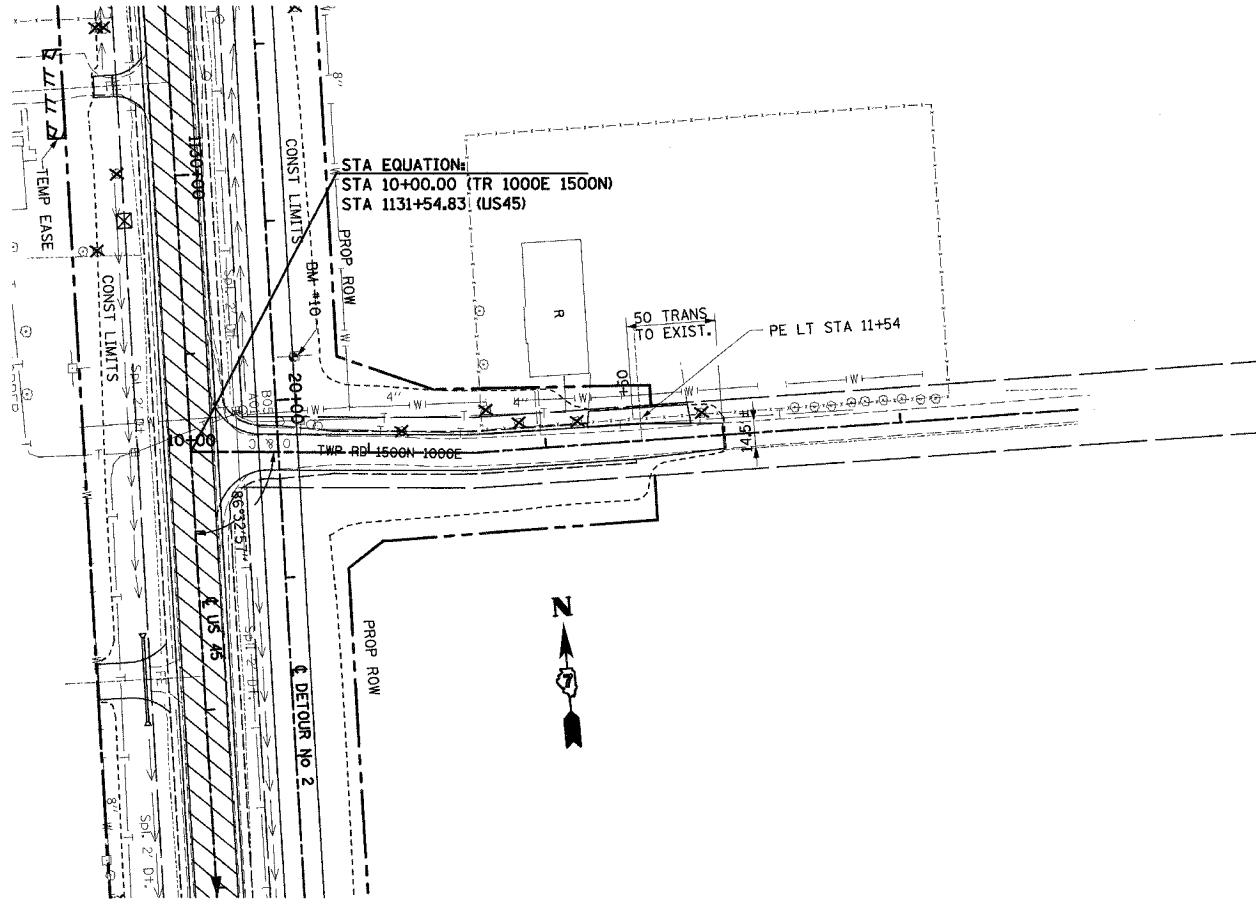
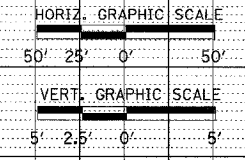
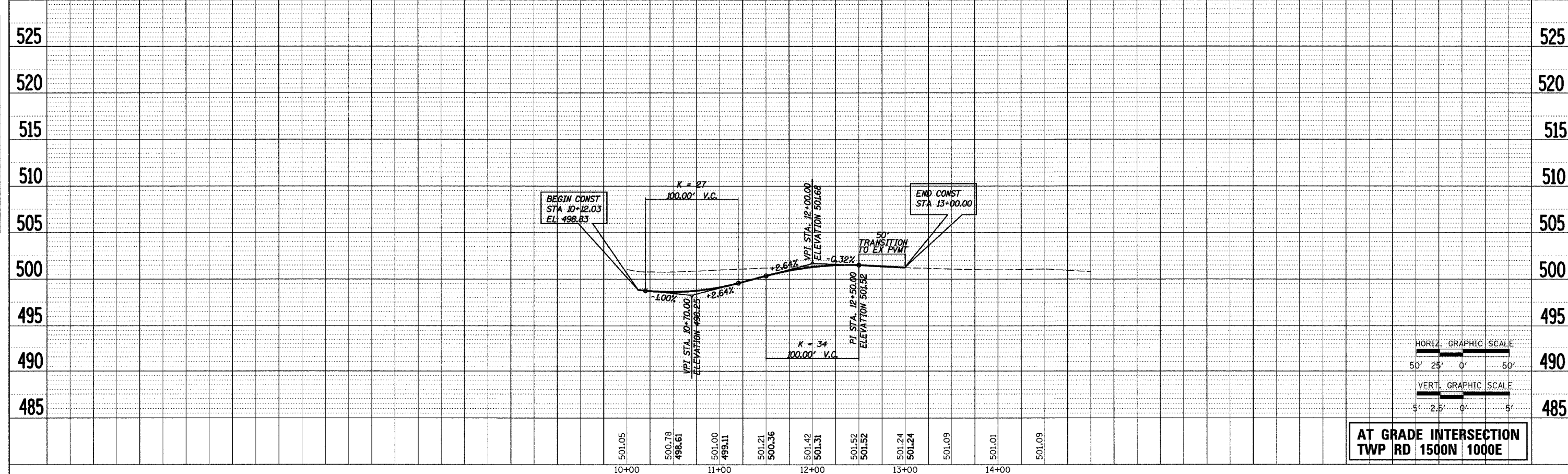


F.A.P. RTE.	SECTION	COUNTY	TOTAL SHEETS	SHEET NO.
328	5R, Y, RS-1	CLAY	376	50
STA.		TO STA.		
FED. ROAD DIST. NO. 7		ILLINOIS	FED. AID PROJECT	
CONTRACT No 94367				



PLAN	SURVEYED	BY	DATE
NOTE BOOK NO.	GRADES CHECKED		
	STRUCTURE NOTATIONS		
	NO.		

PROFILE	SURVEYED	BY	DATE
NOTE BOOK NO.	GRADES CHECKED		
	STRUCTURE NOTATIONS		
	NO.		



**AT GRADE INTERSECTION  
TWP RD 1500N 1000E**

T.R. 1500N 1000E

...\\US45\_BREKDDT\USRD\1500N\_1000E.dwg 12/14/2004 7:09:14 AM