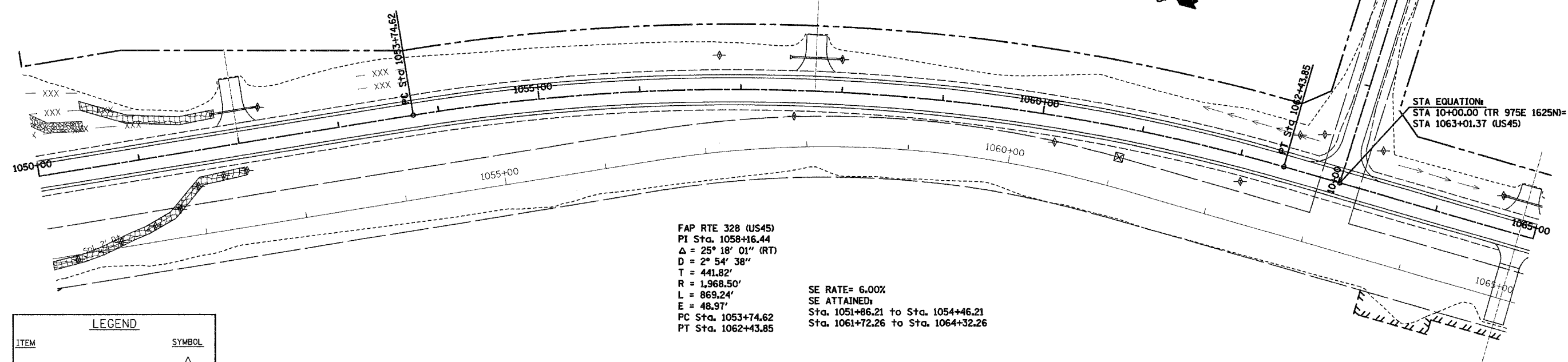


F.A.P. RTE.	SECTION	COUNTY	TOTAL SHEETS	SHEET NO.
328	5R, Y, RS-1	CLAY	376	80

STA. TO STA.
FED. ROAD DIST. NO. ILLINOIS FED. AID PROJECT

CONTRACT No 94367

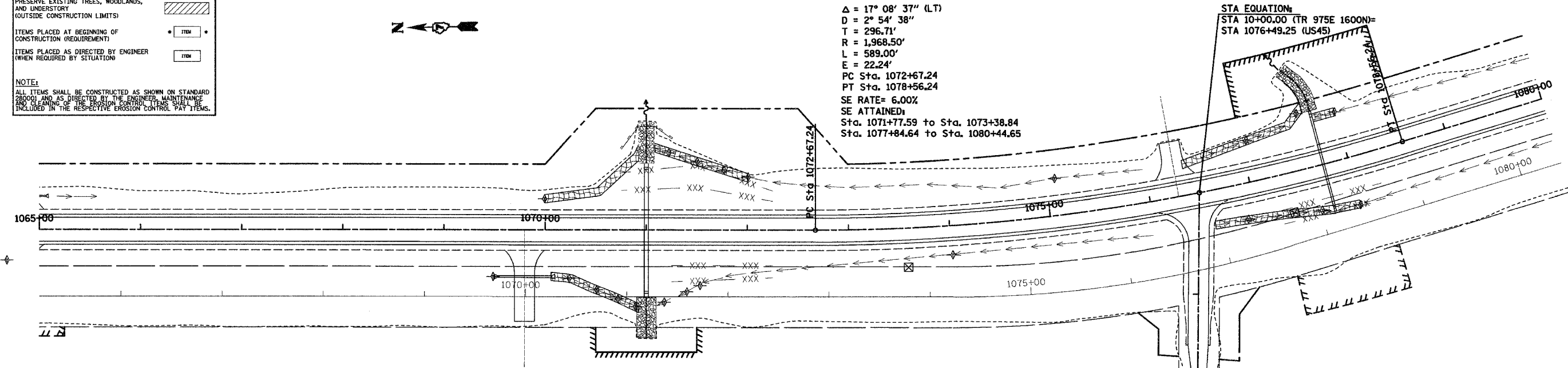


FAP RTE 328 (US45)

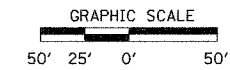
LEGEND

ITEM	SYMBOL
TEMPORARY DITCH CHECKS	
TEMPORARY DITCH CHECKS	
TEMPORARY SILT FENCE	
PERIMETER EROSION BARRIER SILT FENCE	
EROSION CONTROL BLANKET	
PRESERVE EXISTING TREES, WOODLANDS, AND UNDERSTORY (OUTSIDE CONSTRUCTION LIMITS)	
ITEMS PLACED AT BEGINNING OF CONSTRUCTION (REQUIREMENT)	
ITEMS PLACED AS DIRECTED BY ENGINEER (WHEN REQUIRED BY SITUATION)	

NOTE:
 ALL ITEMS SHALL BE CONSTRUCTED AS SHOWN ON STANDARD 280001 AND AS DIRECTED BY THE ENGINEER. MAINTENANCE AND CLEANING OF THE EROSION CONTROL ITEMS SHALL BE INCLUDED IN THE RESPECTIVE EROSION CONTROL PAY ITEMS.



FAP RTE 328 (US45)



REVISIONS	
NAME	DATE

ILLINOIS DEPARTMENT OF TRANSPORTATION
EROSION CONTROL PLAN
 SCALE: VERT. _____
 HORIZ. _____
 DATE: 12/14/04
 DRAWN BY: UJ
 CHECKED BY: JJC

I:\GIS\PROJECTS\328\328_04\328_04_80.dwg 12/14/04 10:23:27 AM