

STATE OF ILLINOIS
DEPARTMENT OF TRANSPORTATION

SHEET 2
OF 4

FAP RTE	SECTION	COUNTY	TOTAL SHEETS	SHEET NO
328	5R, Y, RS-1	CLAY	376	88

STA	TO STA
ILLINOIS	US 45

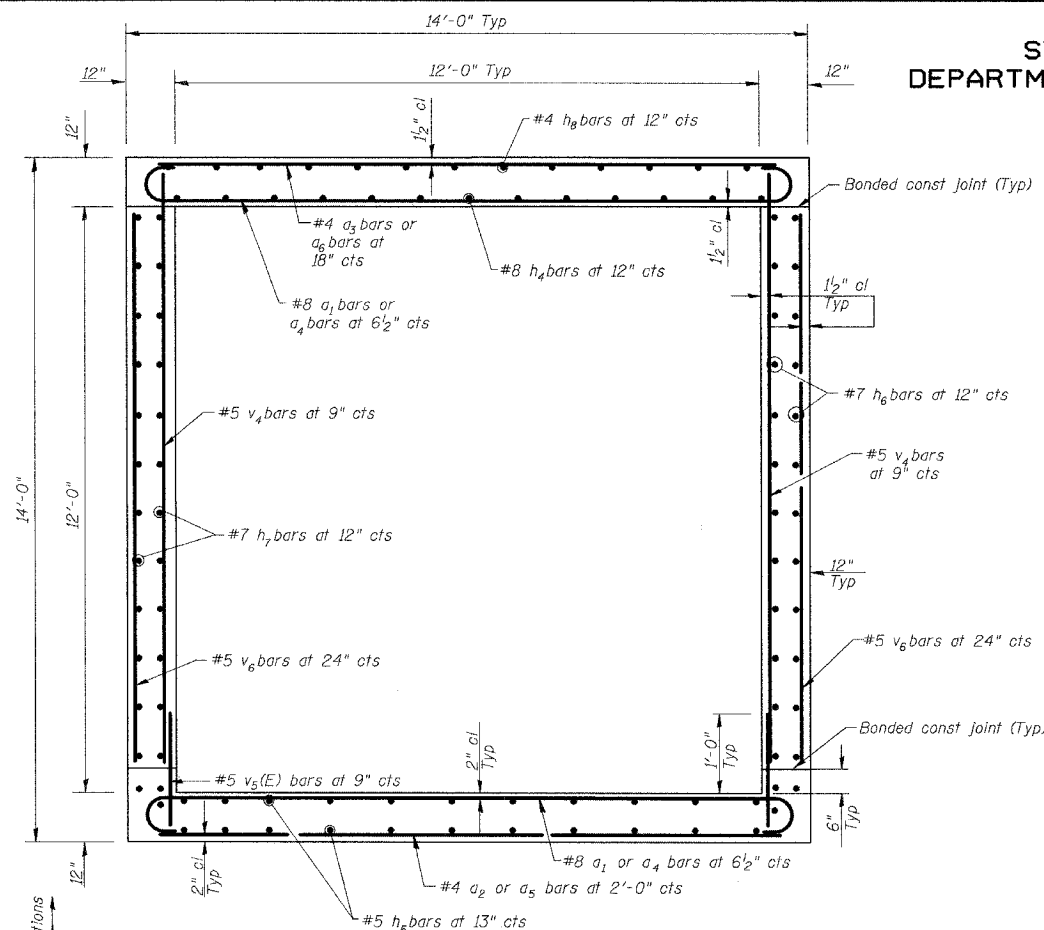
CONTRACT No 94367

**** BILL OF MATERIAL**

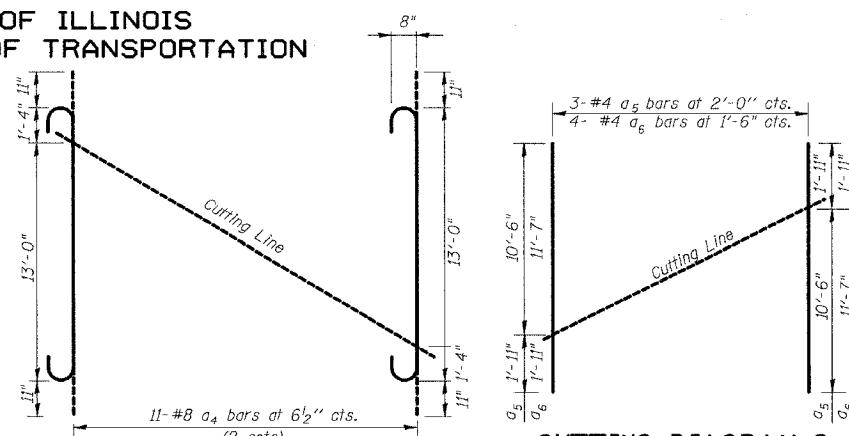
Bar	No.	Size	Length	Shape
a ₁	8	#8	15'-6"	
a ₂	2	#4	12'-3"	
a ₃	2	#4	12'-3"	
a ₄	22	#8	16'-2"	
a ₅	3	#4	12'-5"	
a ₆	4	#4	13'-6"	
a ₇	4	#4	13'-6"	
h ₄	13	#8	9'-10"	
h ₅	24	#5	14'-2"	
h ₆	52	#7	3'-1"	
h ₇	52	#7	9'-0"	
h ₈	13	#4	9'-7"	
h ₉	8	#4	15'-1"	
h _{10(E)}	104	#6	2'-6"	
v ₄	32	#5	12'-2"	
v _{5(E)}	32	#5	2'-6"	
v ₆	14	#5	11'-4"	

** Bill of Material is for two (2) End Sections.
Quantities given for information only.

Note: Weight included with total reinforcing bars on sheet 3 of 4.

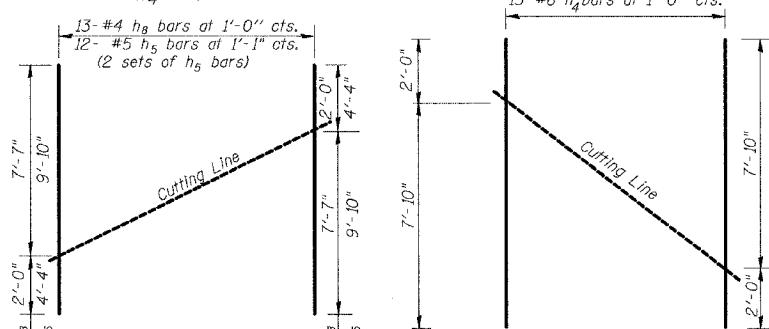


SECTION A-A



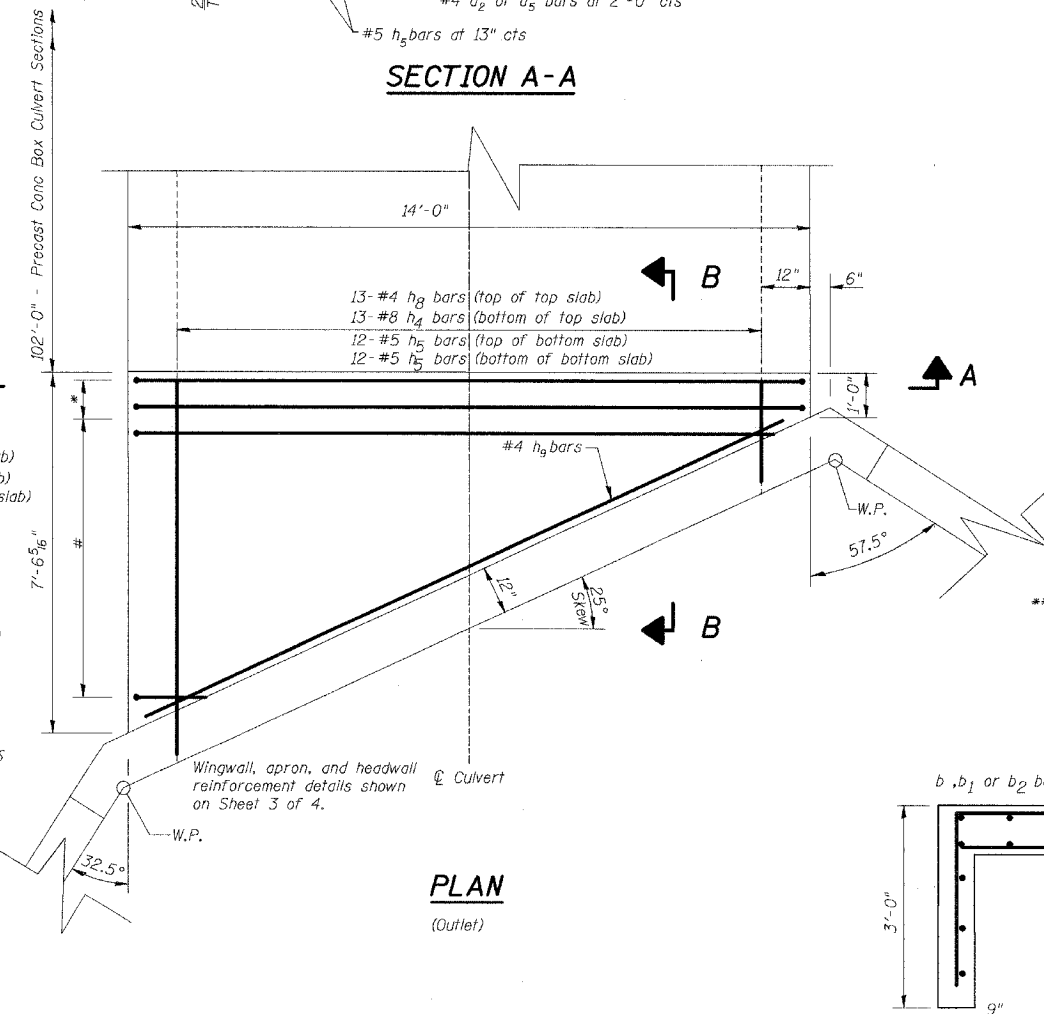
CUTTING DIAGRAM 1
(a₄ bars)

CUTTING DIAGRAM 2
(a₅ and a₆ bars)

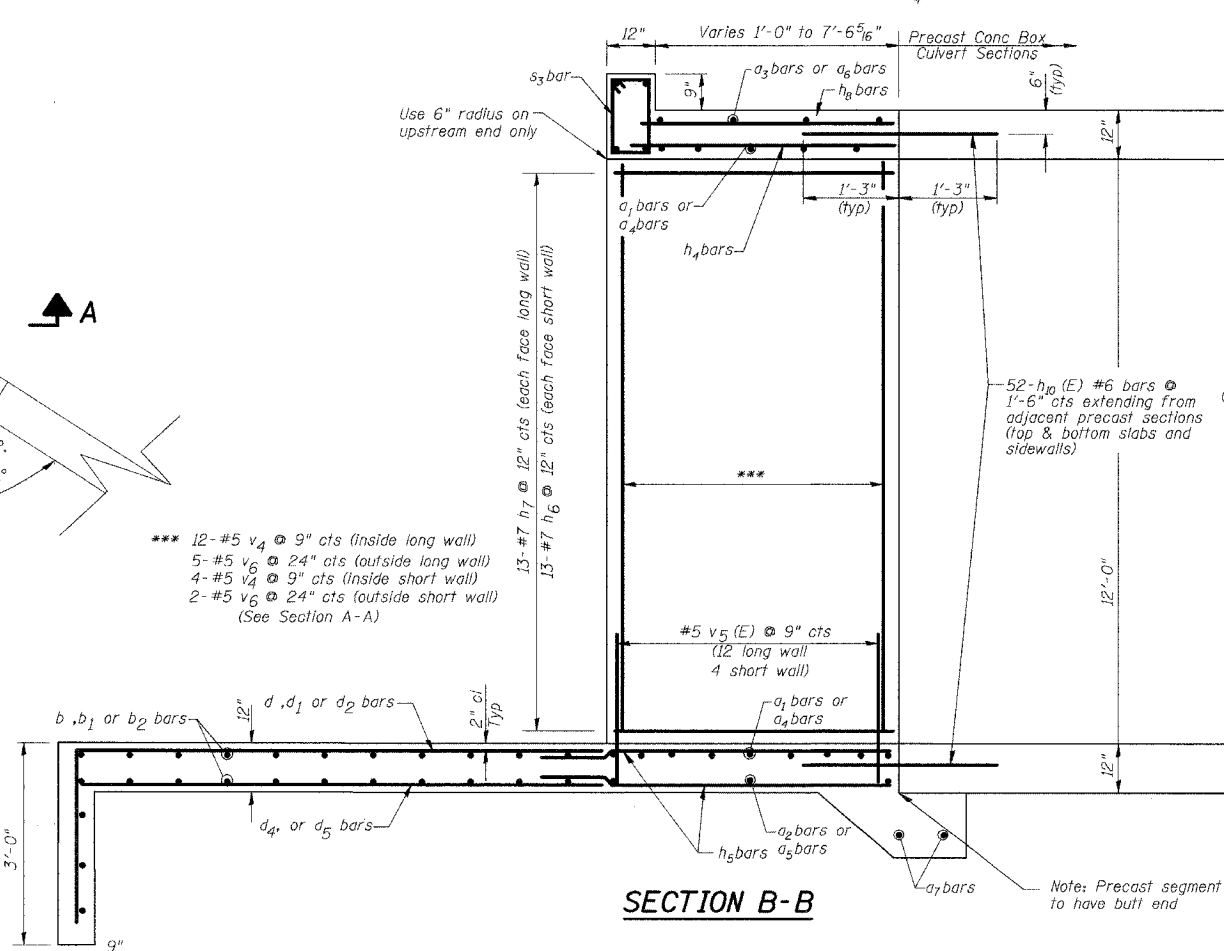


CUTTING DIAGRAM 3
(h₈ bars and h₅ bars)

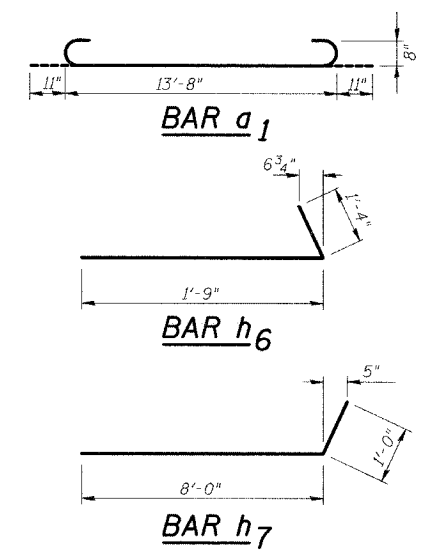
CUTTING DIAGRAM 4
(h₄ bars)



PLAN
(Outlet)



SECTION B-B



CAST-IN-PLACE CULVERT
FAP 328 (US 45) OVER
TRIB TO LITTLE WABASH
SECTION 5R, Y, RS-1
CLAY COUNTY STA 1040+19.21

HR HURST-FROSCHÉ ENGINEERS, INC.
CONSULTING ENGINEERS & ARCHITECTS
1400 E. TREMONT ST.
HILLSBORO, ILLINOIS 62049

DESIGNED	JLG
CHECKED	RPB
DRAWN	BAD
CHECKED	RPB