
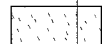

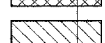
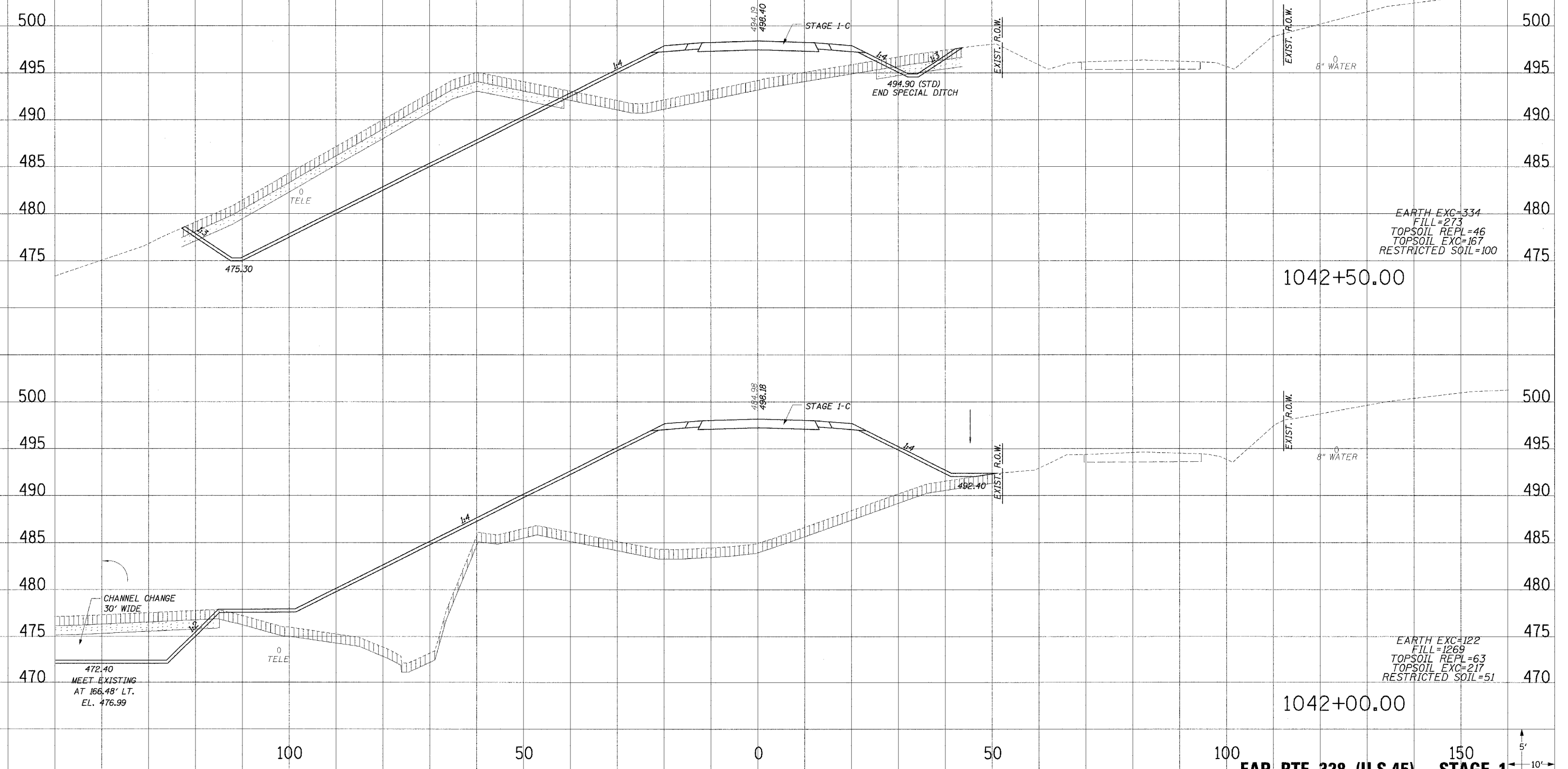


F. A. ETE.	SECTION	COUNTY	TOTAL SHEETS	SHEET NO.
328	5R, Y, RS-1	CLAY	376	148
STA.		TO STA.		
FED. ROAD DIST. NO.	B.LINES	FED. AID PROJECT		

CONTRACT No 94367

**LEGEND**

-  TOPSOIL EXCAVATION
-  REMOVAL & DISPOSAL OF RESTRICTED SOIL (SEE EMBANKMENT SPL PROVISION)
-  PAVEMENT REMOVAL
-  PAVEMENT TO BE BROKEN & LEFT IN PLACE



EARTH EXC=334  
 FILL=273  
 TOPSOIL REPL=46  
 TOPSOIL EXC=167  
 RESTRICTED SOIL=100

EARTH EXC=122  
 FILL=1269  
 TOPSOIL REPL=63  
 TOPSOIL EXC=217  
 RESTRICTED SOIL=51

FAP RTE 328 (U.S.45) - STAGE 1

HLO/14/10  
 TEMPLATE  
 NOTE BOOK  
 AREAS CHECKED  
 NO.

HLO/14/10  
 TEMPLATE  
 NOTE BOOK  
 AREAS CHECKED  
 NO.

12/12/2004 10:02:23 PM