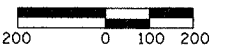
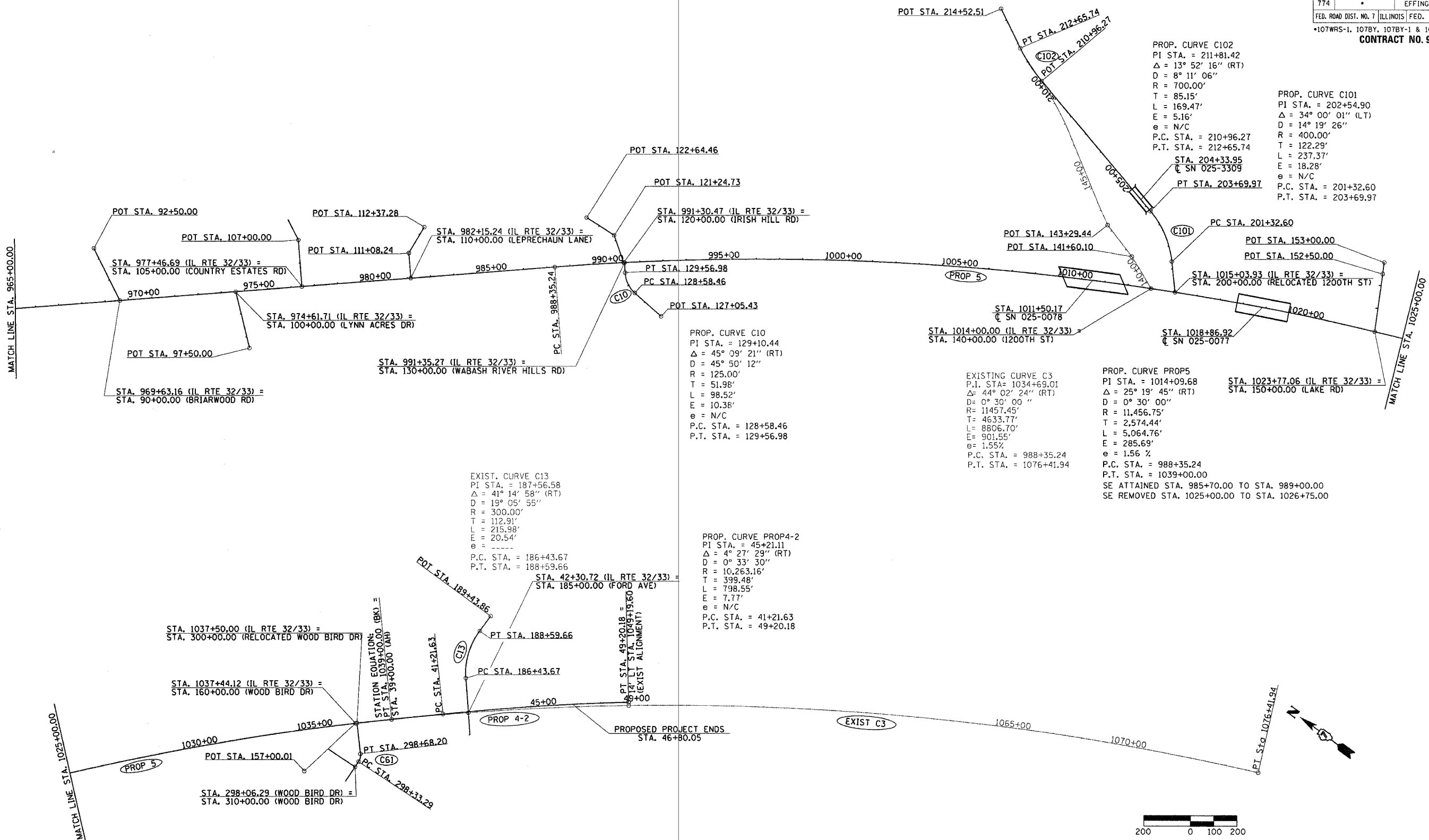


F.A.P. RTE.	SECTION	COUNTY	TOTAL SHEETS	SHEET NO.
774	*	EFFINGHAM	344	31
FED. ROAD DIST. NO. 7 ILLINOIS FED. AID PROJECT				
*107WRS-1, 107BY, 107BY-1 & 107B-2				
<b>CONTRACT NO. 94827</b>				



PROP. CURVE C61  
 PI STA. = 298+51.49  
 $\Delta = 40^\circ 00' 00''$  (LT)  
 $D = 114^\circ 35' 30''$   
 $R = 50.00'$   
 $T = 18.20'$   
 $L = 34.91'$   
 $e = 3.21'$   
 $e = N/C$   
 P.C. STA. = 298+33.29  
 P.T. STA. = 298+68.20

EXIST. CURVE C13  
 PI STA. = 187+56.58  
 $\Delta = 41^\circ 14' 58''$  (RT)  
 $D = 19^\circ 05' 55''$   
 $R = 300.00'$   
 $T = 112.91'$   
 $L = 215.98'$   
 $e = 20.54'$   
 $e =$   
 P.C. STA. = 186+43.67  
 P.T. STA. = 188+59.66

PROP. CURVE C10  
 PI STA. = 129+10.44  
 $\Delta = 45^\circ 09' 21''$  (RT)  
 $D = 45^\circ 50' 12''$   
 $R = 125.00'$   
 $T = 51.98'$   
 $L = 98.52'$   
 $E = 10.38'$   
 $e = N/C$   
 P.C. STA. = 128+58.46  
 P.T. STA. = 129+56.98

PROP. CURVE PROP4-2  
 PI STA. = 45+21.11  
 $\Delta = 4^\circ 27' 29''$  (RT)  
 $D = 0^\circ 33' 30''$   
 $R = 10,263.16'$   
 $T = 399.48'$   
 $L = 798.55'$   
 $E = 7.77'$   
 $e = N/C$   
 P.C. STA. = 41+21.63  
 P.T. STA. = 49+20.18

EXISTING CURVE C3  
 P.I. STA. = 1034+69.01  
 $\Delta = 44^\circ 02' 24''$  (RT)  
 $D = 0^\circ 30' 00''$   
 $R = 11457.45'$   
 $T = 4633.77'$   
 $L = 8806.70'$   
 $E = 901.55'$   
 $e = 1.55\%$   
 P.C. STA. = 988+35.24  
 P.T. STA. = 1076+41.94

PROP. CURVE C102  
 PI STA. = 211+81.42  
 $\Delta = 13^\circ 52' 16''$  (RT)  
 $D = 8^\circ 11' 06''$   
 $R = 700.00'$   
 $T = 85.15'$   
 $L = 169.47'$   
 $E = 5.16'$   
 $e = N/C$   
 P.C. STA. = 210+96.27  
 P.T. STA. = 212+65.74

PROP. CURVE C101  
 PI STA. = 202+54.90  
 $\Delta = 34^\circ 00' 01''$  (LT)  
 $D = 14^\circ 19' 26''$   
 $R = 400.00'$   
 $T = 122.29'$   
 $L = 237.37'$   
 $E = 18.28'$   
 $e = N/C$   
 P.C. STA. = 201+32.60  
 P.T. STA. = 203+69.97

PROP. CURVE PROP5  
 PI STA. = 1014+09.68  
 $\Delta = 25^\circ 19' 45''$  (RT)  
 $D = 0^\circ 30' 00''$   
 $R = 11,456.75'$   
 $T = 2,574.44'$   
 $L = 5,064.76'$   
 $E = 285.69'$   
 $e = 1.56\%$   
 P.C. STA. = 988+35.24  
 P.T. STA. = 1039+00.00  
 SE ATTAINED STA. 985+70.00 TO STA. 989+00.00  
 SE REMOVED STA. 1025+00.00 TO STA. 1026+75.00

REVISIONS	
NAME	DATE

ILLINOIS DEPARTMENT OF TRANSPORTATION  
 HORIZONTAL ALIGNMENT PLAN  
 SHEET 2 OF 2  
 SCALE: 1"=200'  
 DATE 4/22/02  
 DRAWN BY NJV  
 CHECKED BY BKB