

F.A.P. RTE. 774	SECTION	COUNTY	TOTAL SHEETS	SHEET NO.
		EFFINGHAM	344	49
FED. ROAD DIST. NO. 7		ILLINOIS	FED. AID PROJECT	
*107WRS-1, 107BY, 107BY-1 & 107B-2				

CONTRACT NO. 94827
TYPICAL SECTION 9
TYPICAL SECTION 10

SHEET 21
SHEET 21

SHEET 21
SHEET 21

SHEET 21
SHEET 21

SHEET 21
SHEET 21

SHEET 21
SHEET 21

SHEET 21
SHEET 21

SHEET 21
SHEET 21

SHEET 21
SHEET 21

SHEET 21
SHEET 21

SHEET 21
SHEET 21

SHEET 21
SHEET 21

SHEET 21
SHEET 21

SHEET 21
SHEET 21

SHEET 21
SHEET 21

SHEET 21
SHEET 21

SHEET 21
SHEET 21

SHEET 21
SHEET 21

SHEET 21
SHEET 21

SHEET 21
SHEET 21

SHEET 21
SHEET 21

SHEET 21
SHEET 21

SHEET 21
SHEET 21

SHEET 21
SHEET 21

SHEET 21
SHEET 21

SHEET 21
SHEET 21

SHEET 21
SHEET 21

SHEET 21
SHEET 21

SHEET 21
SHEET 21

SHEET 21
SHEET 21

SHEET 21
SHEET 21

SHEET 21
SHEET 21

SHEET 21
SHEET 21

SHEET 21
SHEET 21

SHEET 21
SHEET 21

SHEET 21
SHEET 21

SHEET 21
SHEET 21

SHEET 21
SHEET 21

SHEET 21
SHEET 21

SHEET 21
SHEET 21

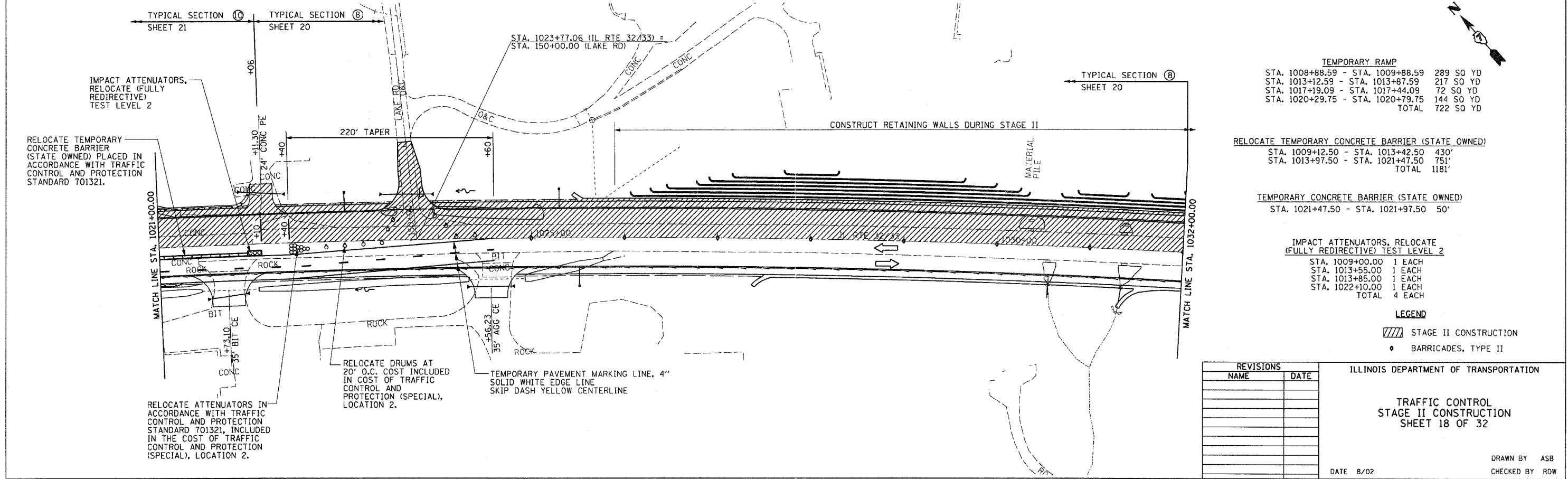
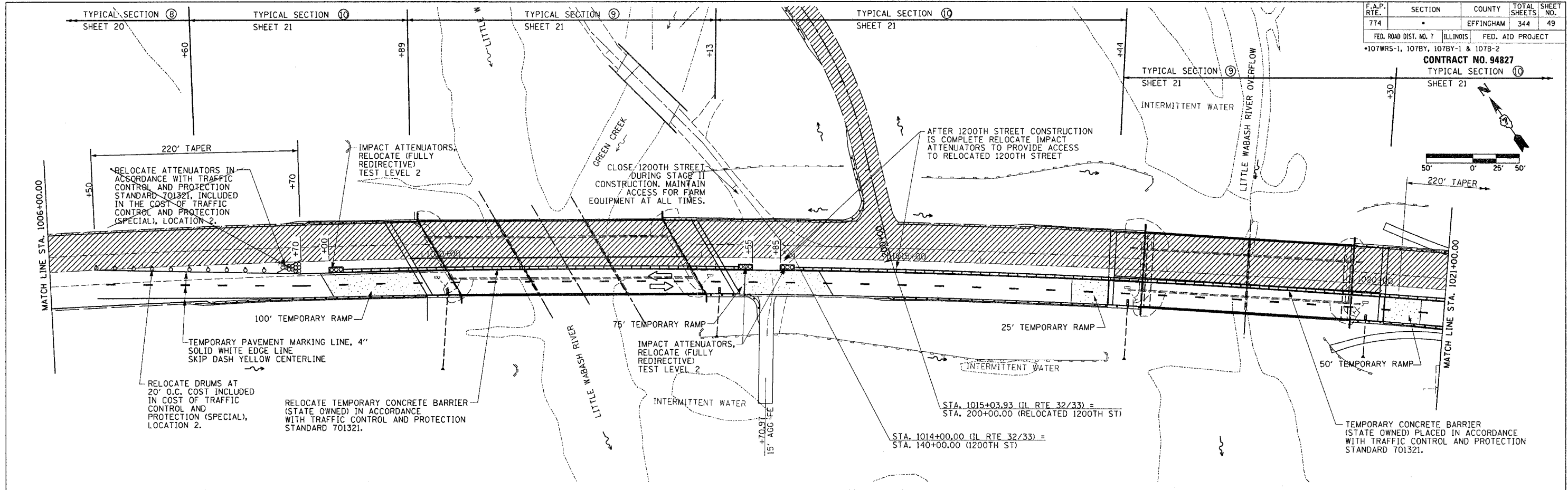
SHEET 21
SHEET 21

SHEET 21
SHEET 21

SHEET 21
SHEET 21

SHEET 21
SHEET 21

SHEET 21
SHEET 21



TEMPORARY RAMP

STA. 1008+88.59 - STA. 1009+88.59	289 SQ YD
STA. 1013+12.59 - STA. 1013+87.59	217 SQ YD
STA. 1017+19.09 - STA. 1017+44.09	72 SQ YD
STA. 1020+29.75 - STA. 1020+79.75	144 SQ YD
TOTAL	722 SQ YD

RELOCATE TEMPORARY CONCRETE BARRIER (STATE OWNED)

STA. 1009+12.50 - STA. 1013+42.50	430'
STA. 1013+97.50 - STA. 1021+47.50	751'
TOTAL	1181'

TEMPORARY CONCRETE BARRIER (STATE OWNED)

STA. 1021+47.50 - STA. 1021+97.50	50'
-----------------------------------	-----

IMPACT ATTENUATORS, RELOCATE (FULLY REDIRECTIVE) TEST LEVEL 2

STA. 1009+00.00	1 EACH
STA. 1013+55.00	1 EACH
STA. 1013+85.00	1 EACH
STA. 1022+10.00	1 EACH
TOTAL	4 EACH

LEGEND
 [Hatched Box] STAGE II CONSTRUCTION
 [Diamond] BARRICADES, TYPE II

REVISIONS	
NAME	DATE

ILLINOIS DEPARTMENT OF TRANSPORTATION
 TRAFFIC CONTROL
 STAGE II CONSTRUCTION
 SHEET 18 OF 32
 DATE 8/02
 DRAWN BY ASB
 CHECKED BY ROW