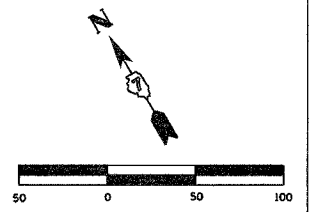
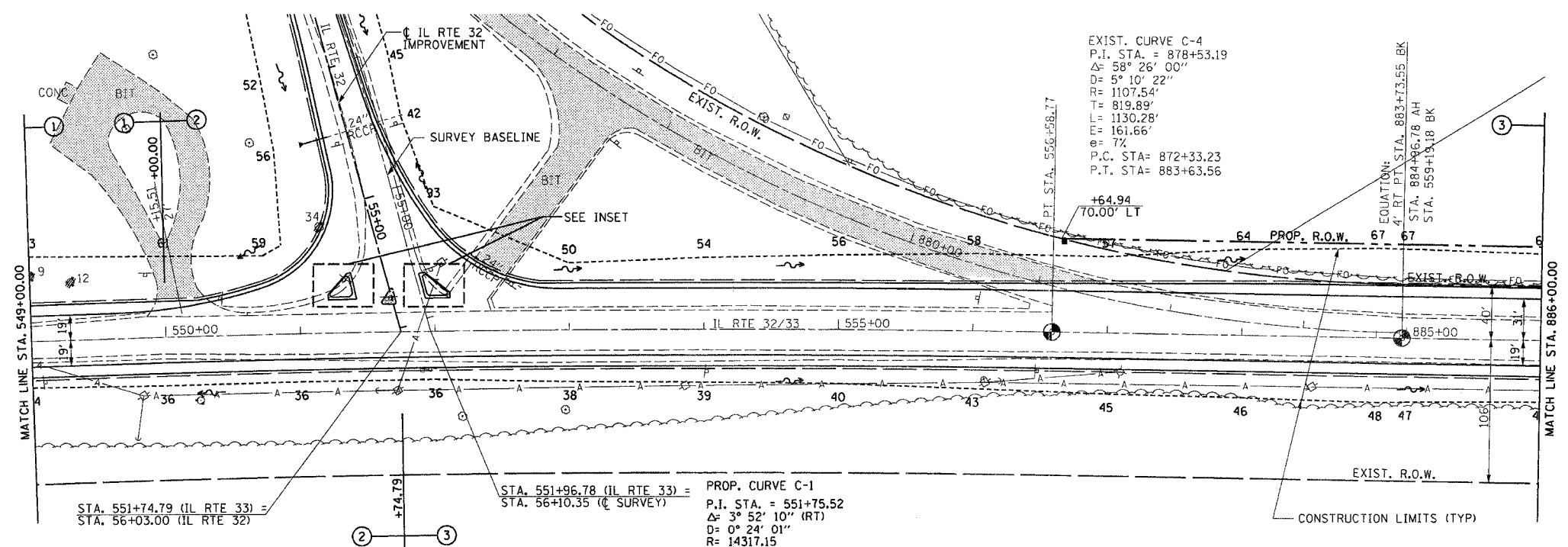


F.A.P. RTE.	SECTION	COUNTY	TOTAL SHEETS	SHEET NO.
774		EFFINGHAM	344	65
STA. 549+00.00		TO STA. 886+00.00		
FED. ROAD DIST. NO. 7 ILLINOIS FED. AID PROJECT				
• 107WRS-1, 107BY, 107BY-1 & 107B-2				
CONTRACT NO. 94827				

PERMANENT SURVEY MARKERS, TYPE I  
 PT STA. 556+58.77 1 EACH  
 STA. 884+96.78 1 EACH  
 TOTAL 2 EACH

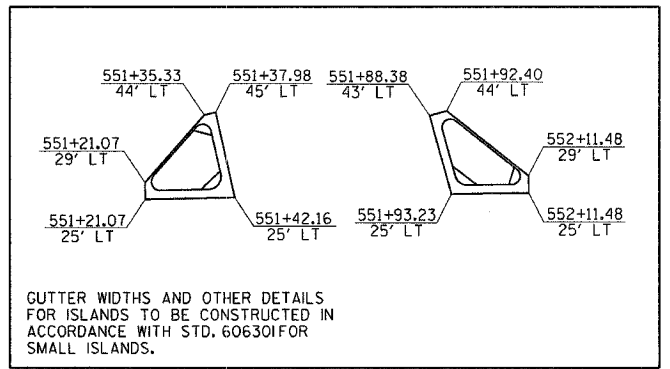


DATE \_\_\_\_\_ BY \_\_\_\_\_  
 SURVEYED \_\_\_\_\_  
 PLAN NOTE BOOK \_\_\_\_\_  
 ALIGNED CHECKED \_\_\_\_\_  
 CHECKED \_\_\_\_\_  
 NO. \_\_\_\_\_



ISLAND REMOVAL  
 LT STA. 551+60.76 - STA. 551+70.27 86 SQ FT

CONCRETE MEDIAN, TYPE SM-6.24  
 LT STA. 551+21.07 - STA. 551+42.16 261 SQ FT  
 LT STA. 551+93.23 - STA. 552+11.48 256 SQ FT  
 TOTAL 517 SQ FT



DATE \_\_\_\_\_ BY \_\_\_\_\_  
 PROFILE SURVEYED \_\_\_\_\_  
 PLAN CHECKED \_\_\_\_\_  
 NOTE BOOK \_\_\_\_\_  
 STRUCTURE NOTATION CHECKED \_\_\_\_\_  
 NO. \_\_\_\_\_

