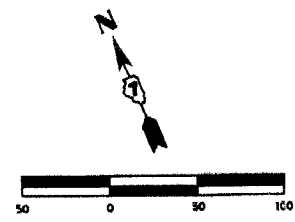


F.A.P. RTE.	SECTION	COUNTY	TOTAL SHEETS	SHEET NO.
774		EFFINGHAM	344	68
STA. 910+00.00 TO STA. 922+00.00				
FED. ROAD DIST. NO. 7 ILLINOIS FED. AID PROJECT				
* 107WRS-1, 107BY, 107BY-1 & 107B-2				
CONTRACT NO. 94827				



PERMANENT SURVEY MARKER, TYPE J
PT STA. 911+43.50 1 EACH

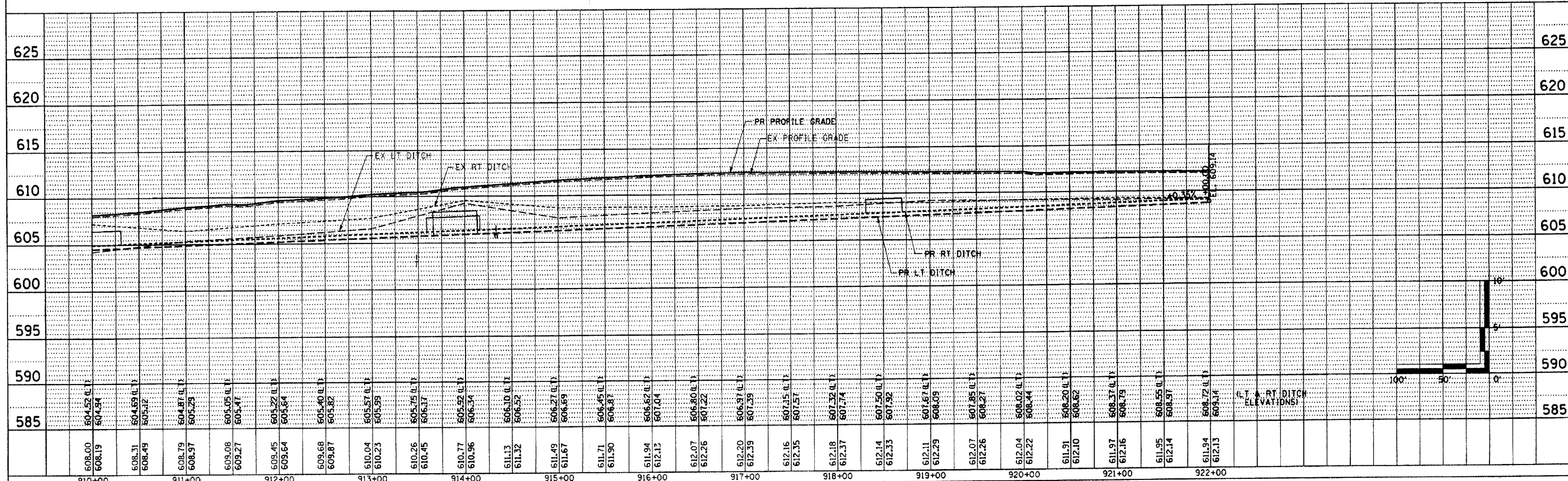
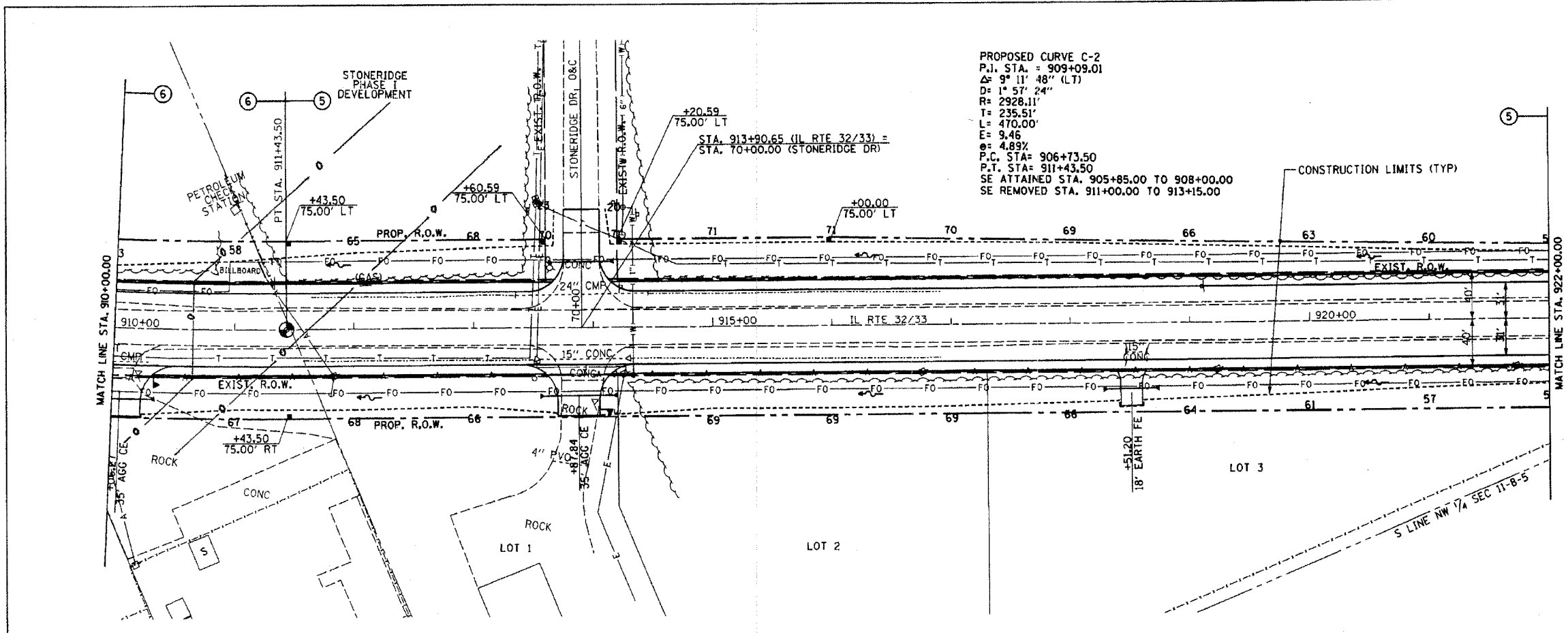
DATE	BY

PLAN
SUBMITTED
NOTED
NOTE BOOK
NO. OF SHEETS
FILE NAME

DATE	BY

PROFILE
SUBMITTED
NOTED
NOTE BOOK
NO. OF SHEETS
FILE NAME

PROPOSED CURVE C-2
P.I. STA. = 909+09.01
 $\Delta = 9^\circ 11' 48''$ (LT)
D = 57' 24"
R = 2928.11'
T = 235.51'
L = 470.00'
E = 3.46'
S = 4.89%
P.C. STA = 906+73.50
P.T. STA = 911+43.50
SE ATTAINED STA. 905+85.00 TO 908+00.00
SE REMOVED STA. 911+00.00 TO 913+15.00



MAIN LINE SHEET 5 OF 18