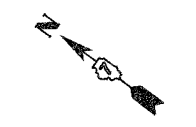


F.A.P. RTE.	SECTION	COUNTY	TOTAL SHEETS	SHEET NO.
774		EFFINGHAM	344	81
STA. 44+00.00		TO STA. 49+20.13		
FED. ROAD DIST. NO. 7 ILLINOIS FED. AID PROJECT				
• 107WRS-1, 107BY, 107BY-1 & 107B-2				
CONTRACT NO. 94827				

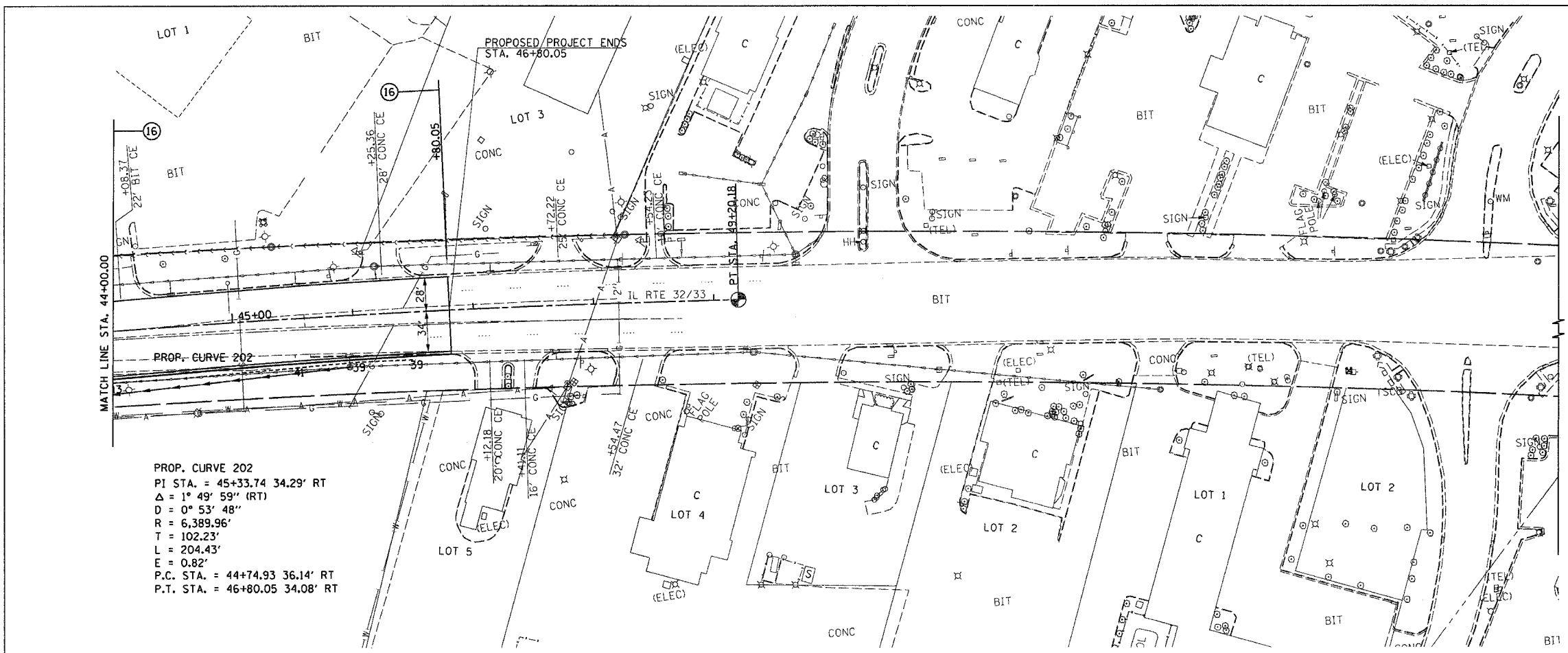


- PERMANENT SURVEY MARKER, TYPE 1
PT STA. 49+20.18 1 EACH
- STORM SEWER REMOVAL, 24"
RT STA. 44+00.00 - STA. 45+95.00 195'
- INLETS TO BE ADJUSTED WITH NEW
TYPE 3 FRAME AND GRATE
RT STA. 45+95.00 1 EACH
- COMBINATION CURB AND GUTTER TYPE B-6.24
RT STA. 44+00.00 - STA. 46+80.05 280'
- MEDIAN REMOVAL PARTIAL DEPTH
STA. 44+00.00 - STA. 45+60.00 1272 SQ FT
- COMBINATION CURB AND GUTTER REMOVAL
RT STA. 44+00.00 - STA. 45+80.05 180'

SEE STORM SEWER
SCHEDULE SHEET 27

- PROP. CURVE PROP4-2
PI STA. = 45+21.11
Δ = 4° 27' 29" (RT)
D = 0° 33' 30"
R = 10,263.16'
T = 399.48'
L = 798.55'
E = 7.77'
e = N/C
P.C. STA = 41+21.63
P.T. STA = 49+20.18
- EXIST. CURVE C-3
P.I. STA. = 1034+75.4
Δ = 44° 02' 00"
D = 0° 30' 00"
R = 11459.2'
T = 4633.6'
L = 8806.7'
E = 901.4'
e = 1.55%
P.C. STA = 988+41.2
P.T. STA = 1076+42.9

PLAN	DATE
SURVEYED BY	
PLOTTED BY	
CHECKED BY	
DATE	



PROP. CURVE 202
PI STA. = 45+33.74 34.29' RT
Δ = 1° 49' 59" (RT)
D = 0° 53' 48"
R = 6,389.96'
T = 102.23'
L = 204.23'
E = 0.82'
P.C. STA. = 44+74.93 36.14' RT
P.T. STA. = 46+80.05 34.08' RT

PROFILE	DATE
SURVEYED BY	
PLOTTED BY	
CHECKED BY	
DATE	

