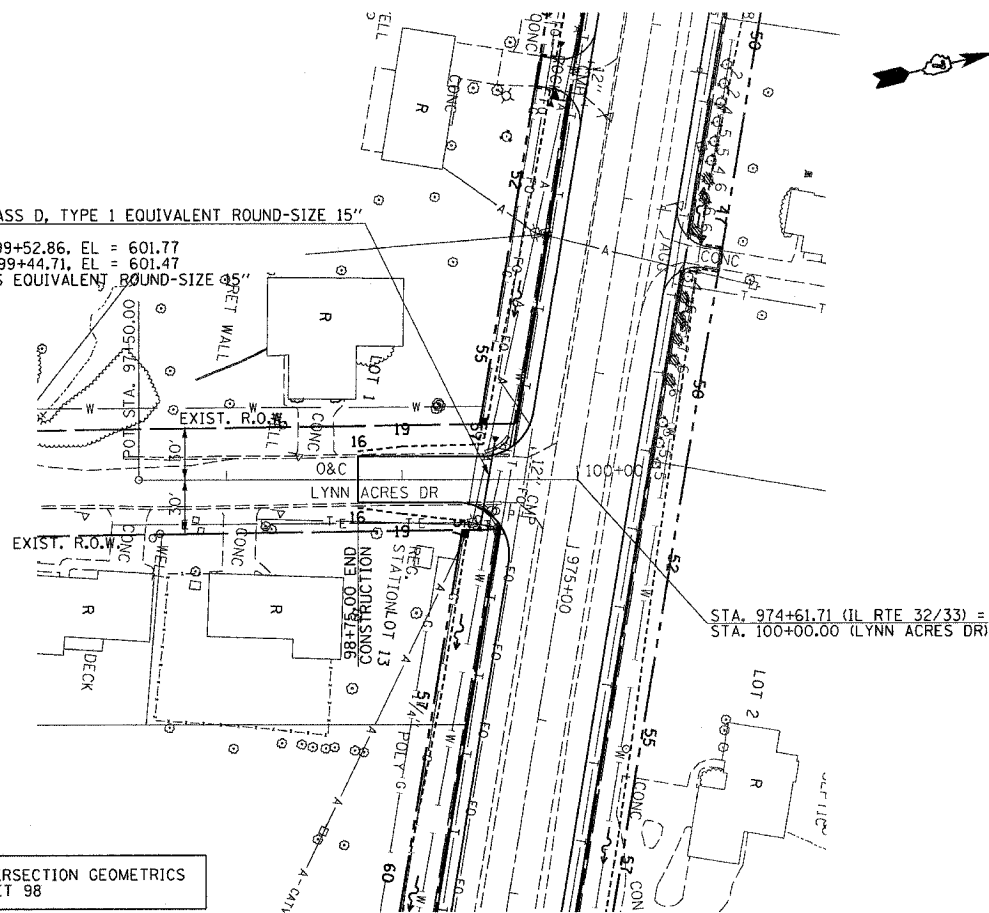


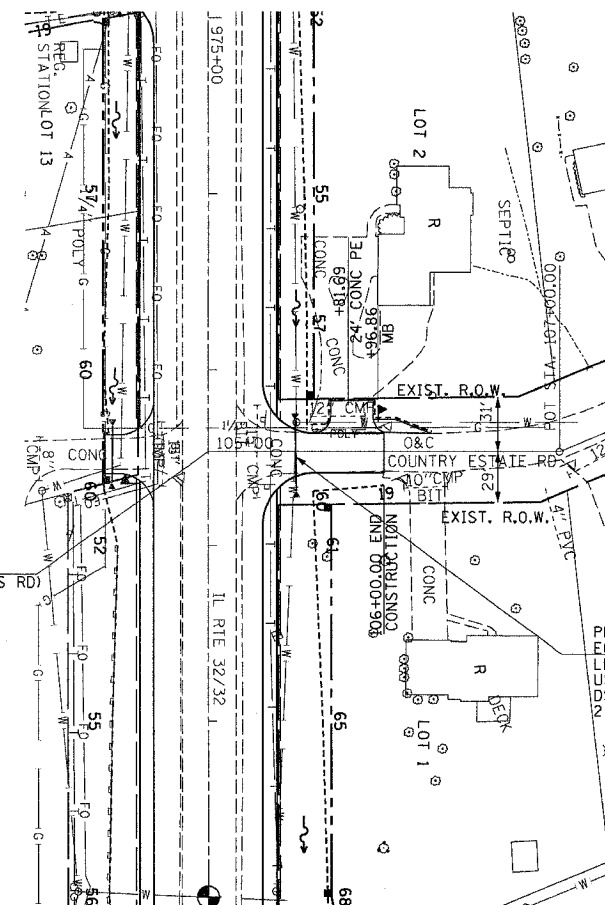
PR PIPE CULVERT, CLASS D, TYPE 1 EQUIVALENT ROUND-SIZE 15"  
 LENGTH = 47'  
 USFL = 21' LT, STA. 99+52.86, EL = 601.77  
 DSFL = 26' RT, STA. 99+44.71, EL = 601.47  
 2 EACH, END SECTIONS EQUIVALENT ROUND-SIZE 30"



FOR INTERSECTION GEOMETRICS  
SEE SHEET 98

STA. 974+46.69 (IL RTE 32/33) =  
 STA. 105+00.00 (COUNTRY ESTATES RD)

PR PIPE CULVERT, CLASS D, TYPE 1  
 EQUIVALENT ROUND-SIZE 15"  
 LENGTH = 40'  
 USFL = 18' LT, STA. 105+49.50, EL = 600.81  
 DSFL = 22' RT, STA. 105+50.16, EL = 600.48  
 2 EACH, END SECTIONS EQUIVALENT ROUND-SIZE 15"



FOR INTERSECTION GEOMETRICS  
SEE SHEET 98

DATE
BY
REVISIONS
PLANNED
ALIGNED
CHECKED
NO.
NOTE BOOK
NO.
FILE NAME

DATE
BY
REVISIONS
PLANNED
GRADES CHECKED
STRUCTURE NOTATION
NO.
NOTE BOOK
NO.
FILE NAME

