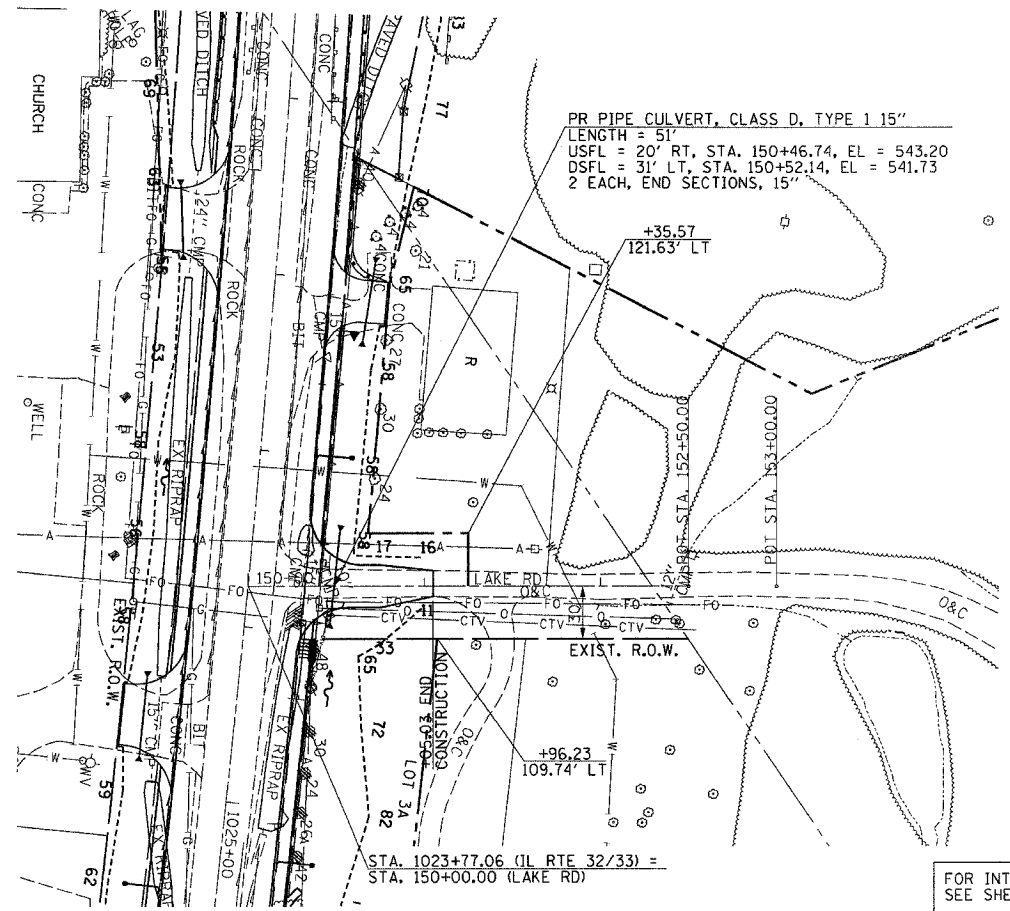


DATE	
BY	
PLAN	
SURVEYED	
ALIGNED	
CHECKED	
NOTE BOOK	
NO. OF WAY CHECKED	
NO.	

DATE	
BY	
PROFILE	
GRADES	
CHECKED	
NOTE BOOK	
NO.	
STRUCTURE	
NOTATIONS	
CURVE	



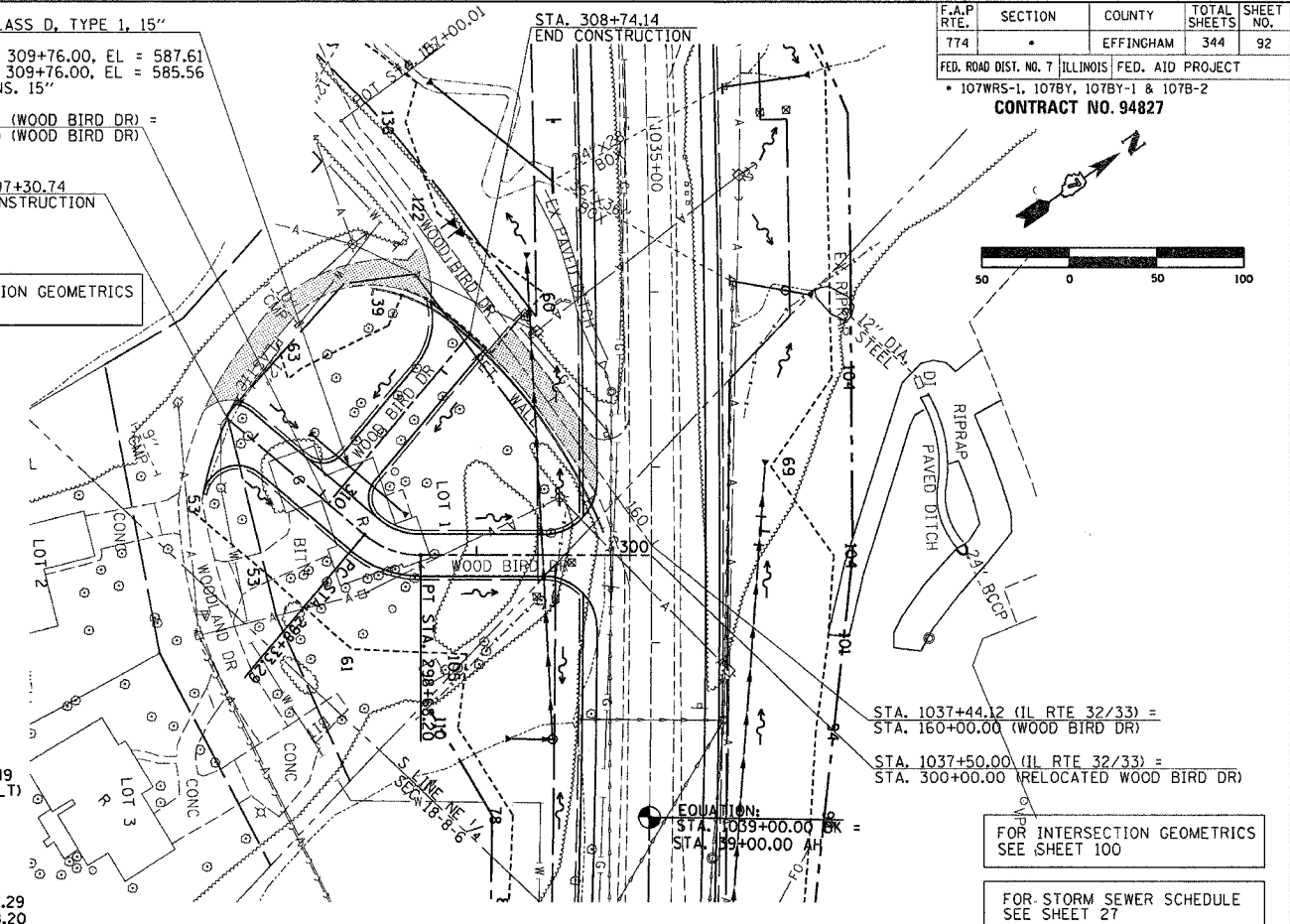
PR PIPE CULVERT, CLASS D, TYPE 1, 15"  
 LENGTH = 65'  
 USFL = 30' RT, STA. 309+76.00, EL. = 587.61  
 DSFL = 35' LT, STA. 309+76.00, EL. = 585.56  
 2 EACH, END SECTIONS, 15"

STA. 298+06.24 (WOOD BIRD DR) =  
 STA. 310+00.00 (WOOD BIRD DR)

STA. 297+30.74  
 END CONSTRUCTION

FOR INTERSECTION GEOMETRICS  
 SEE SHEET 100

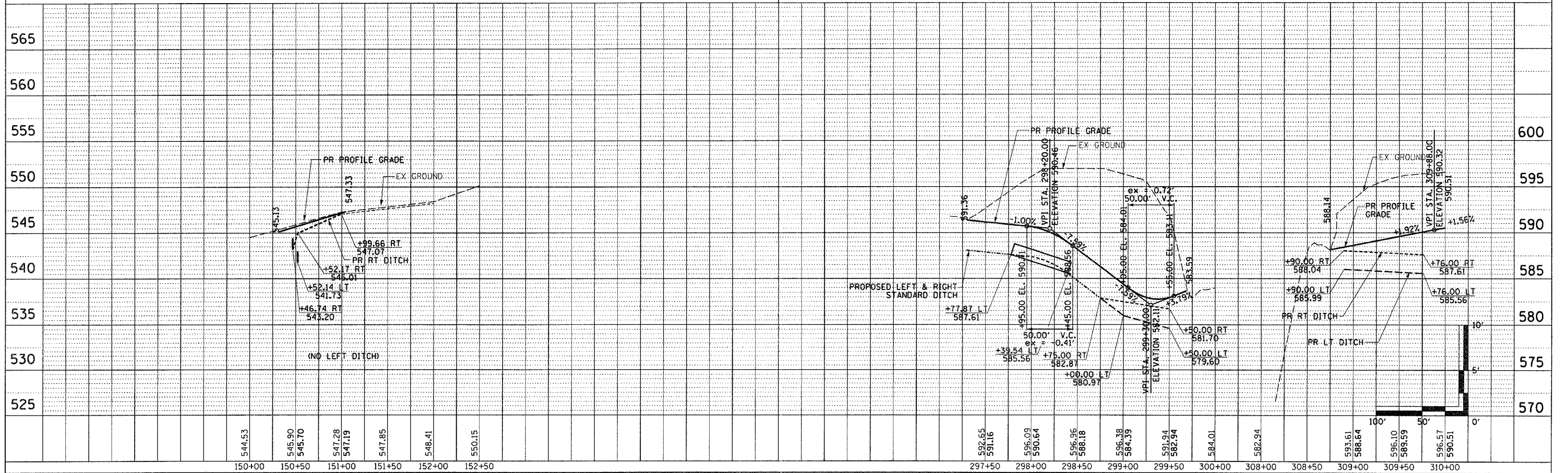
PROP. CURVE C61  
 PI STA. = 298+51.49  
 $\Delta = 40^\circ 00' 00''$  (LT)  
 $D = 114^\circ 35' 30''$   
 $R = 50.00'$   
 $T = 18.20'$   
 $L = 34.91'$   
 $E = 3.21'$   
 $e = N/C$   
 P.C. STA = 298+33.29  
 P.T. STA = 298+68.20



F.A.P. RTE.	SECTION	COUNTY	TOTAL SHEETS	SHEET NO.
774		EFFINGHAM	344	92
FED. ROAD DIST. NO. 7 ILLINOIS FED. AID PROJECT				
107WRS-1, 107BY, 107BY-1 & 107B-2				
CONTRACT NO. 94827				

FOR INTERSECTION GEOMETRICS  
 SEE SHEET 100

FOR STORM SEWER SCHEDULE  
 SEE SHEET 27



PROPOSED LEFT & RIGHT  
 STANDARD DITCH

LAKE RD & WOOD BIRD DR PUBLIC ROAD SHEET 11 OF 12