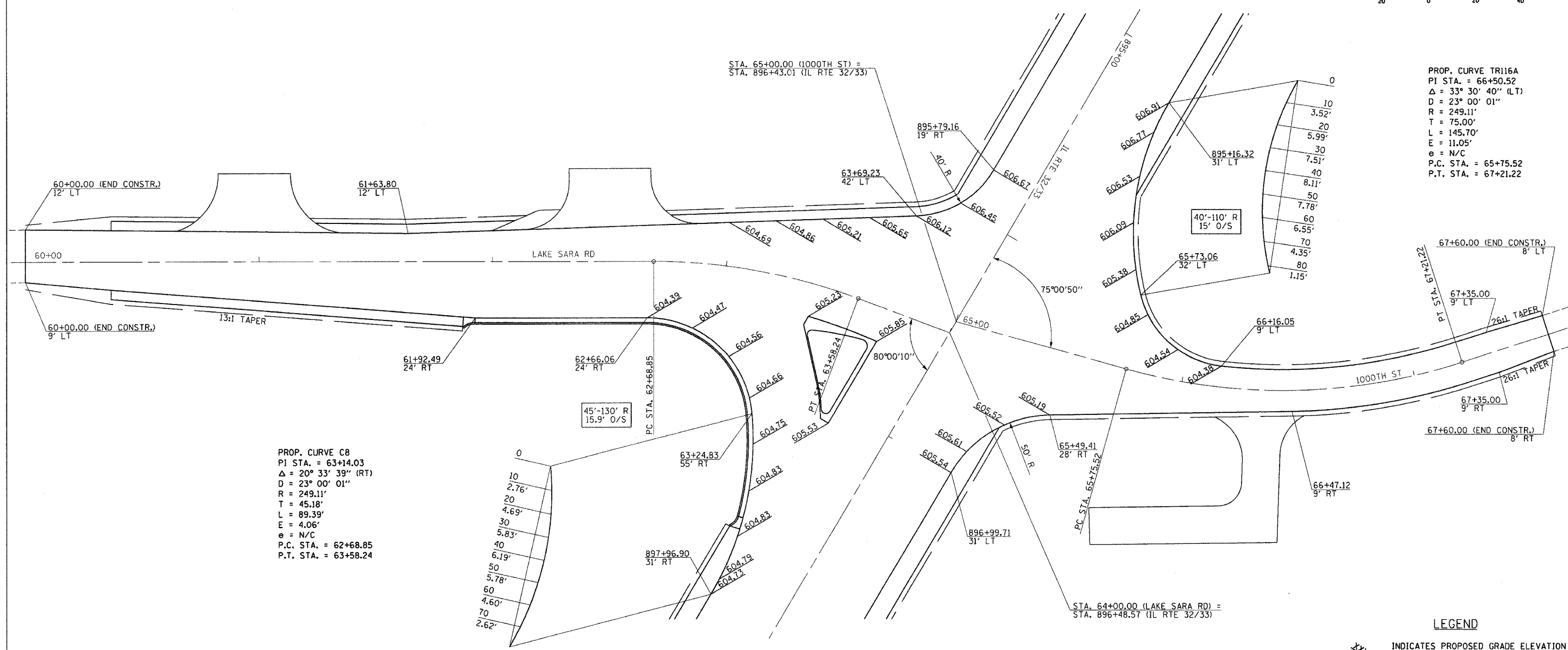
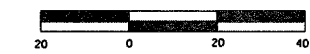


F.A.P. RTE.	SECTION	COUNTY	TOTAL SHEETS	SHEET NO.
774	*	EFFINGHAM	344	96
FED. ROAD DIST. NO. 7 ILLINOIS FED. AID PROJECT				
*107WRS-1, 107BY, 107BY-1 & 107B-2				
CONTRACT NO. 94827				



PROP. CURVE C8
 PI STA. = 63+14.03
 $\Delta = 20^\circ 33' 39''$ (RT)
 $D = 23^\circ 00' 01''$
 $R = 249.11'$
 $T = 45.18'$
 $L = 89.39'$
 $E = 4.06'$
 $e = N/C$
 P.C. STA. = 62+68.85
 P.T. STA. = 63+58.24

PROP. CURVE TR116A
 PI STA. = 66+50.52
 $\Delta = 33^\circ 30' 40''$ (LT)
 $D = 23^\circ 00' 01''$
 $R = 249.11'$
 $T = 75.00'$
 $L = 145.70'$
 $E = 11.05'$
 $e = N/C$
 P.C. STA. = 65+75.52
 P.T. STA. = 67+21.22

LEGEND

XXX.XX INDICATES PROPOSED GRADE ELEVATION
 INTERVAL AROUND CURVES IS 20'
 UNLESS NOTED

REVISIONS	
NAME	DATE

ILLINOIS DEPARTMENT OF TRANSPORTATION
 INTERSECTION GEOMETRICS
 SHEET 3 OF 8

LAKE SARA RD

DATE 8/02
 DRAWN BY MLO
 CHECKED BY SJK