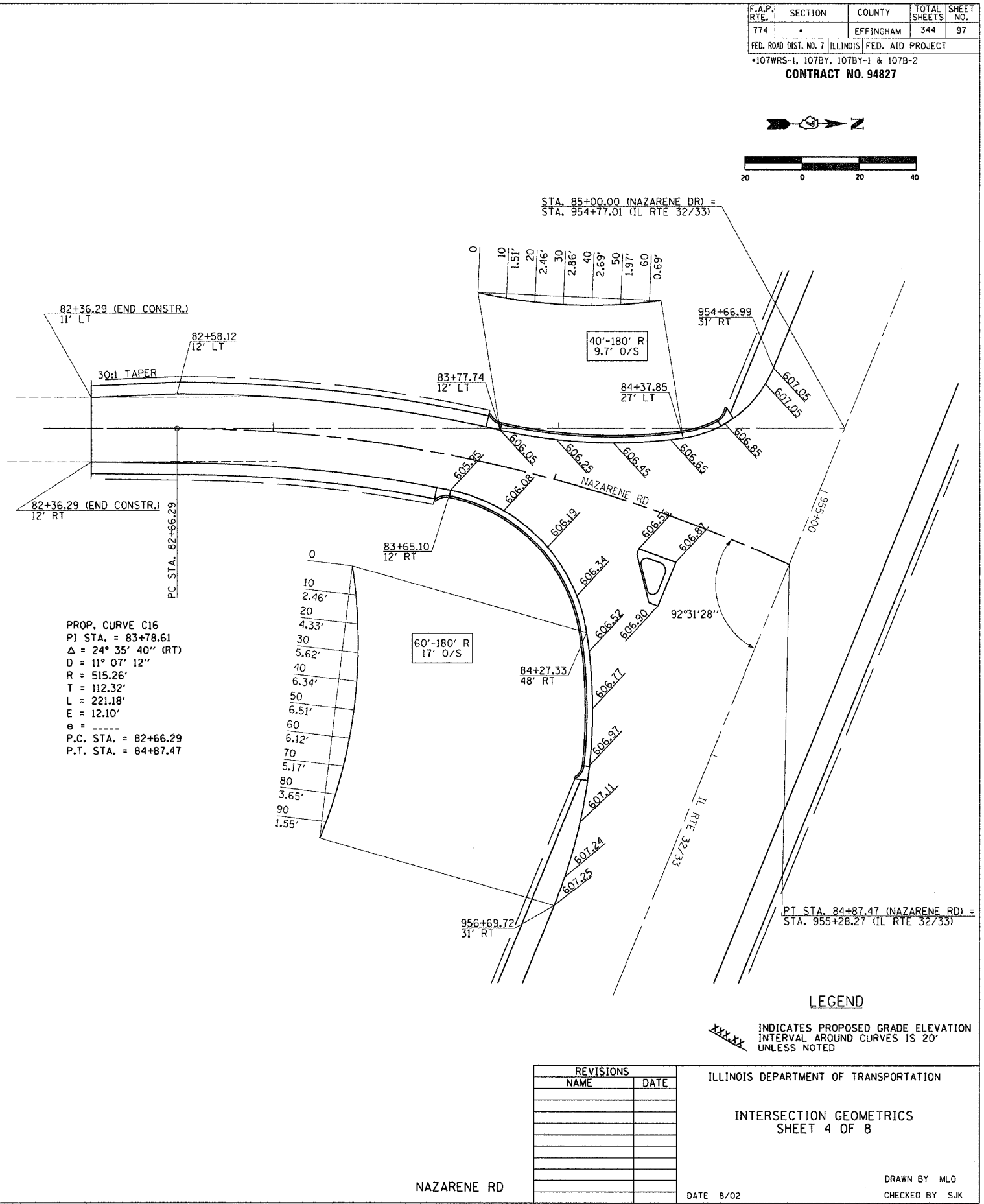
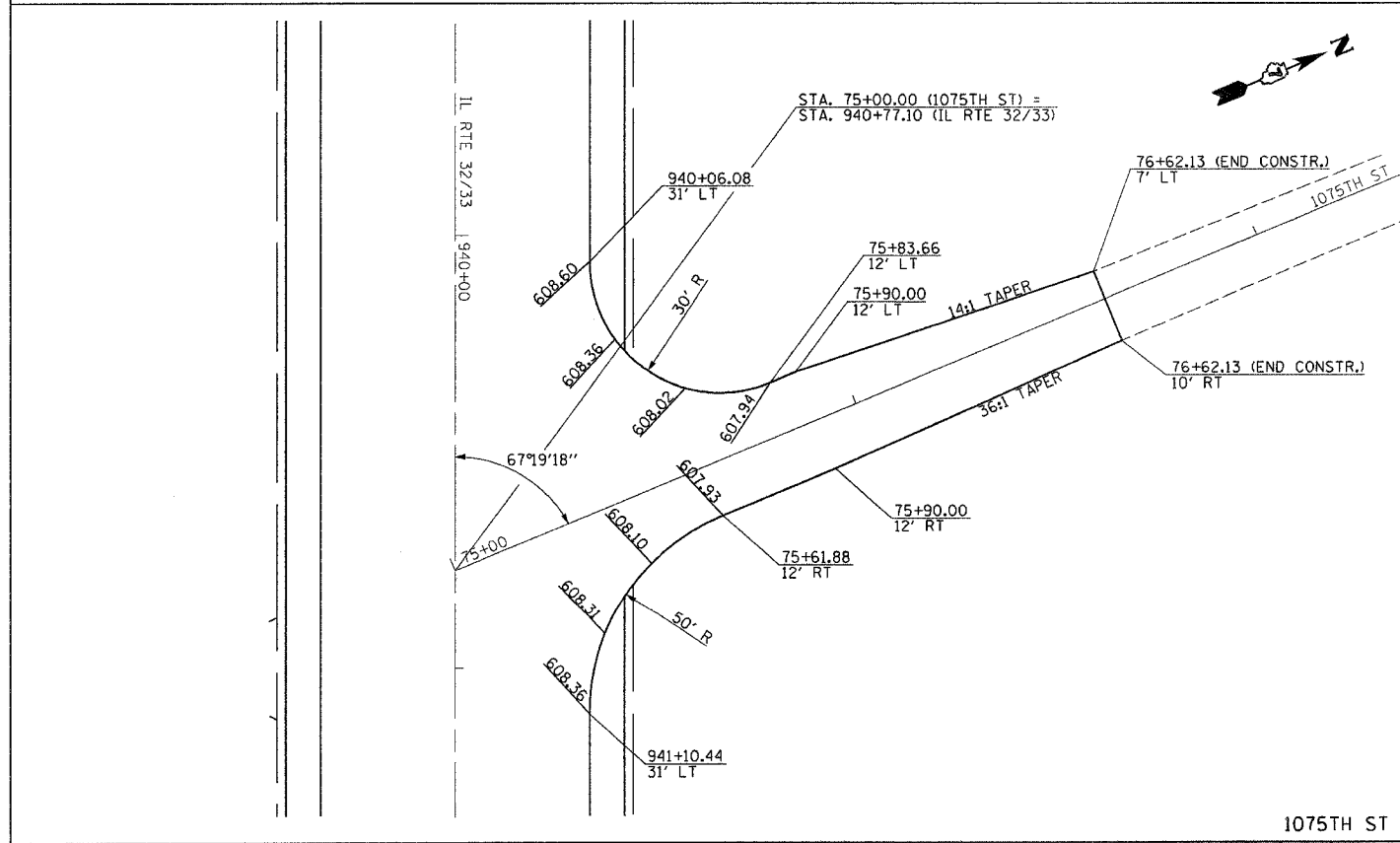
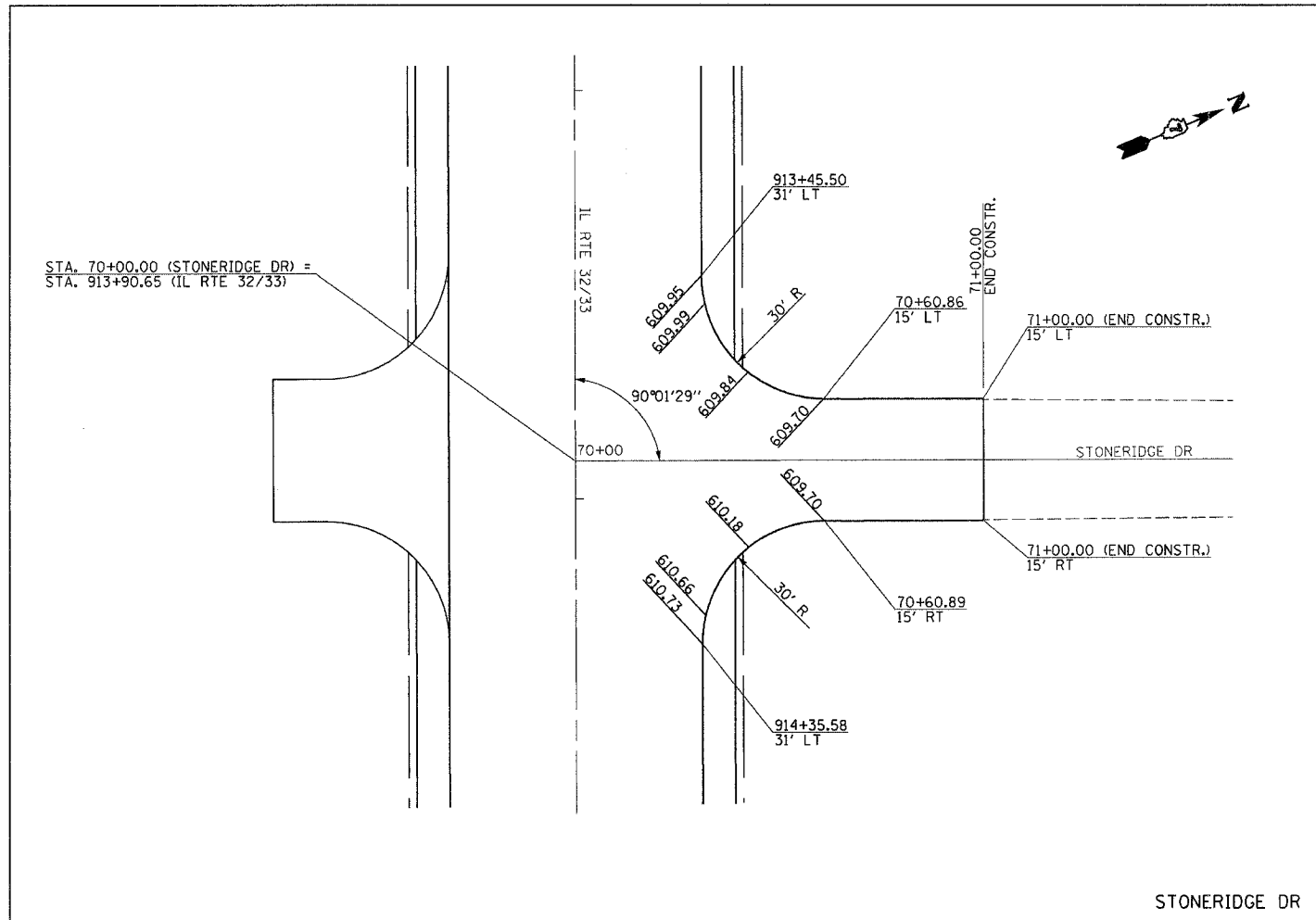
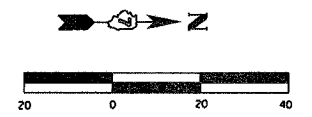


F.A.P. RTE.	SECTION	COUNTY	TOTAL SHEETS	SHEET NO.
774		EFFINGHAM	344	97

FED. ROAD DIST. NO. 7 ILLINOIS FED. AID PROJECT
 *107WRS-1, 107BY, 107BY-1 & 107B-2
CONTRACT NO. 94827



PROP. CURVE C16
 P.I. STA. = 83+78.61
 $\Delta = 24^\circ 35' 40''$ (RT)
 $D = 11^\circ 07' 12''$
 $R = 515.26'$
 $T = 112.32'$
 $L = 221.18'$
 $E = 12.10'$
 $\theta = \text{---}$
 P.C. STA. = 82+66.29
 P.T. STA. = 84+87.47

LEGEND

XXX-XX INDICATES PROPOSED GRADE ELEVATION INTERVAL AROUND CURVES IS 20' UNLESS NOTED

REVISIONS	
NAME	DATE

ILLINOIS DEPARTMENT OF TRANSPORTATION
 INTERSECTION GEOMETRICS
 SHEET 4 OF 8

DATE 8/02
 DRAWN BY MLO
 CHECKED BY SJK