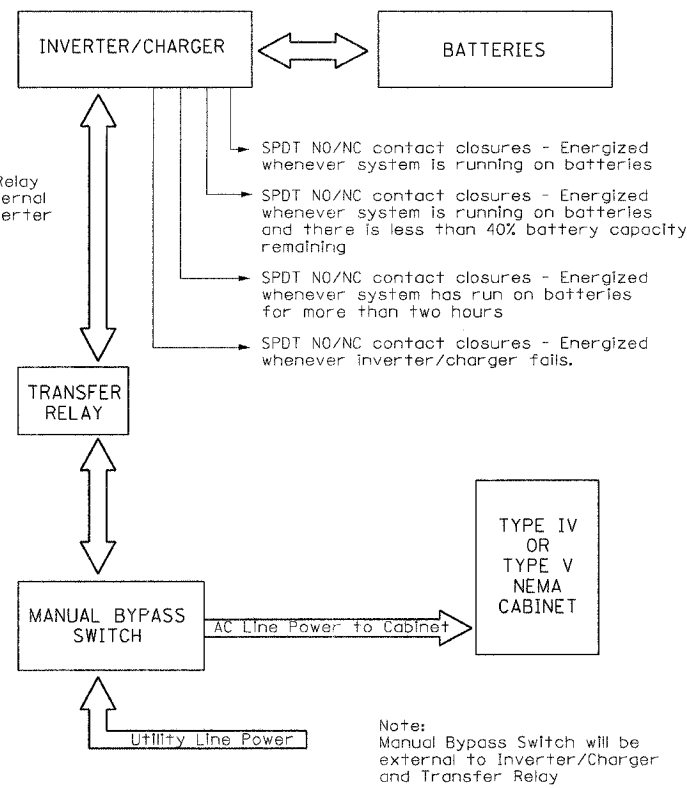
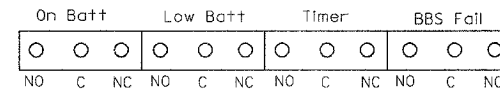


- Notes:
1. TB - #8 Terminal Blocks
  2. NO - Normally Open
  3. NC - Normally Closed
  4. NO/NC contacts shall all toggle simultaneously with one single manually operated switch.
  5. Manual Bypass Switch shall only switch line. Neutral and Equipment Ground are not switched and shall be connected to NEMA Cabinet Buses.

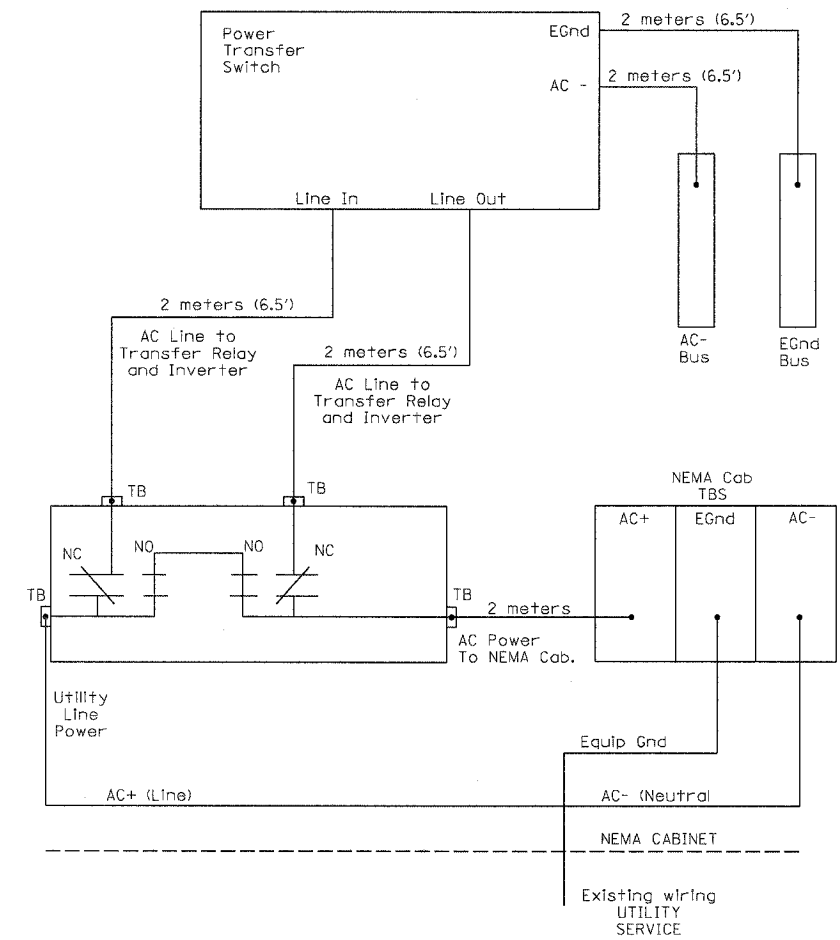


**UPS BLOCK DIAGRAM**



- Notes:
1. NO/NC contacts may either share or use separate commons.

Relay contacts (NO/NC) available on panel-mounted terminal block (typical)



**UPS UTILITY POWER CONNECTION**

REVISIONS	
NAME	DATE

ILLINOIS DEPARTMENT OF TRANSPORTATION

FORD AVENUE  
TRAFFIC SIGNAL PLANS  
SHEET 3 OF 4

DATE 8/02

DRAWN BY MLO  
CHECKED BY BWD