

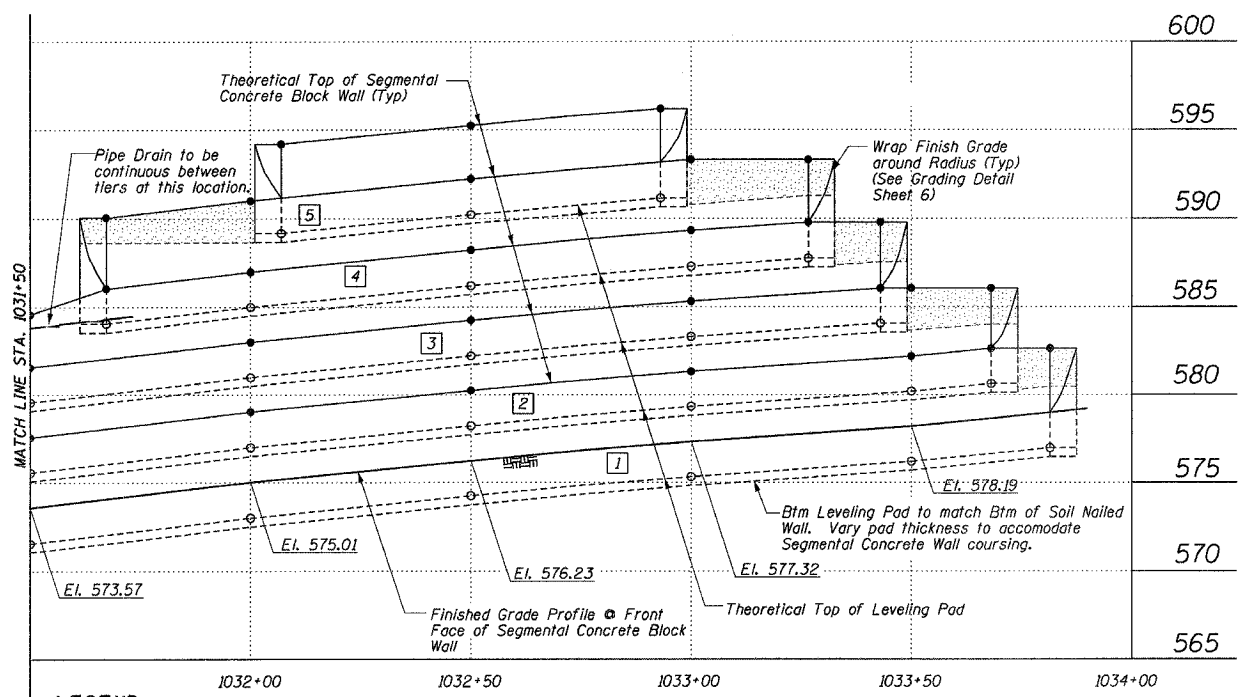
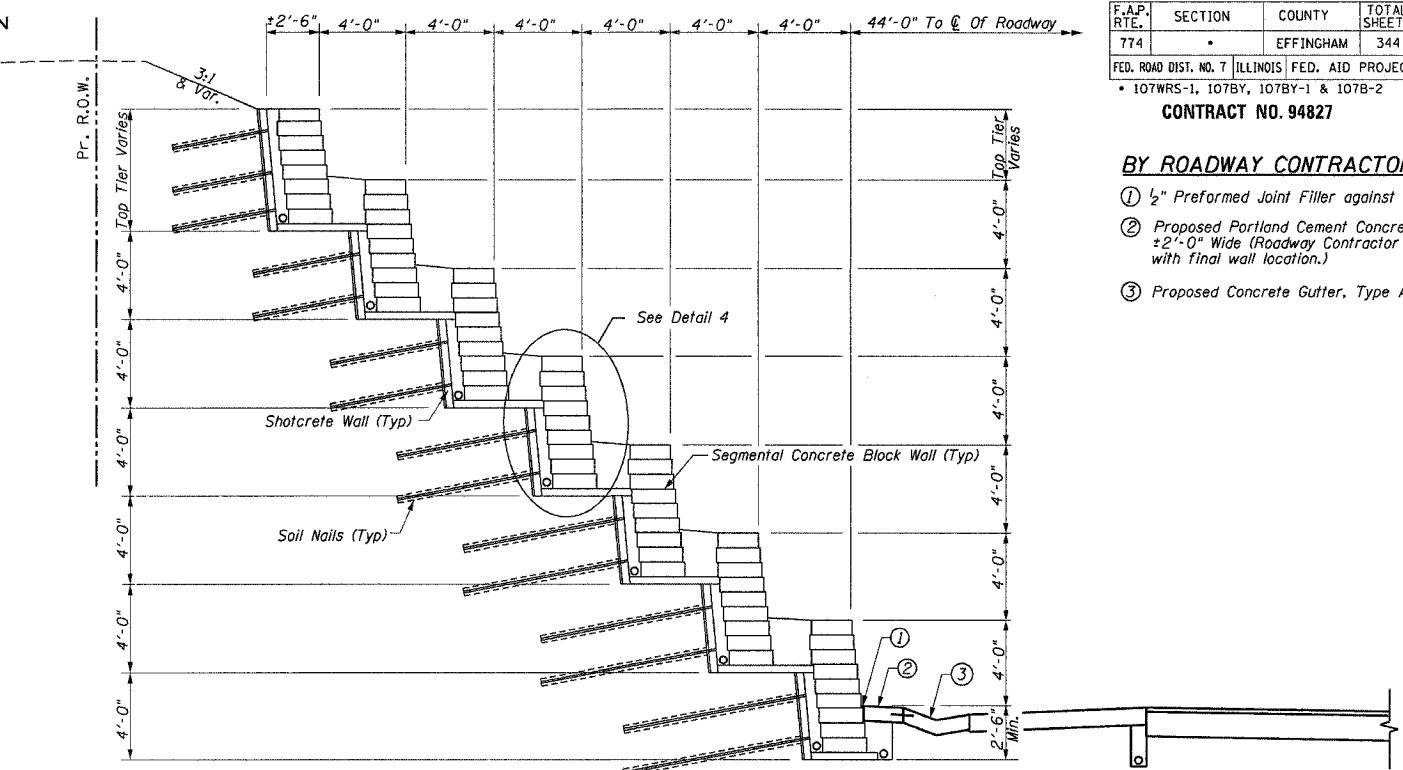
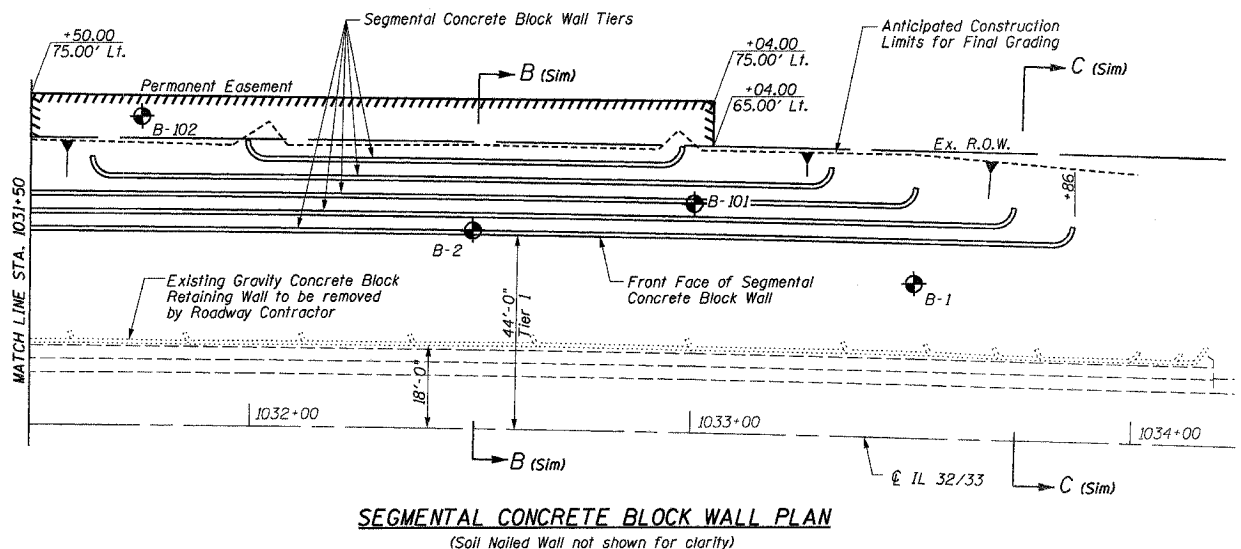
F.A.P. RTE.	SECTION	COUNTY	TOTAL SHEETS	SHEET NO.
774		EFFINGHAM	344	124

OF 14 SHEETS

FED. ROAD DIST. NO. 7 ILLINOIS FED. AID PROJECT
* 107WRS-1, 107BY, 107BY-1 & 107B-2
CONTRACT NO. 94827

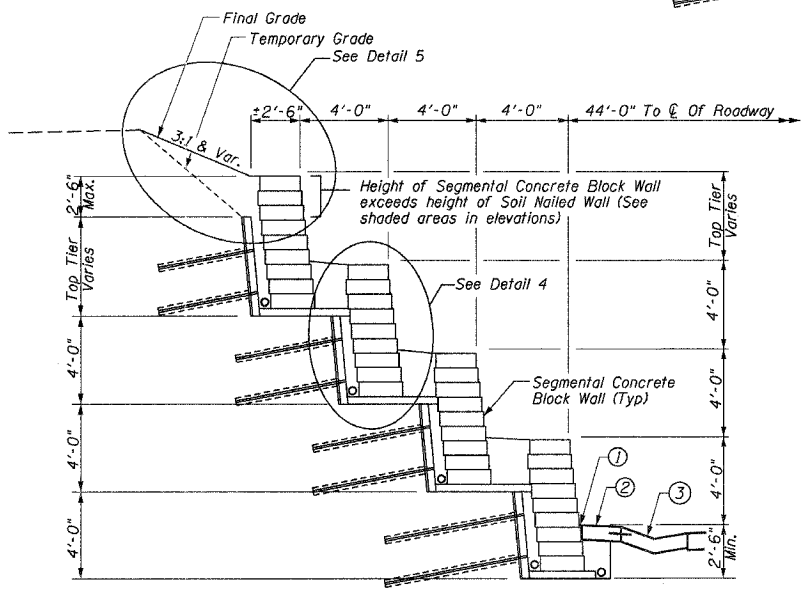
BY ROADWAY CONTRACTOR:

- ① 1/2" Preformed Joint Filler against Retaining Wall
- ② Proposed Portland Cement Concrete Shoulder, 6" ±2'-0" Wide (Roadway Contractor to coordinate width with final wall location.)
- ③ Proposed Concrete Gutter, Type A

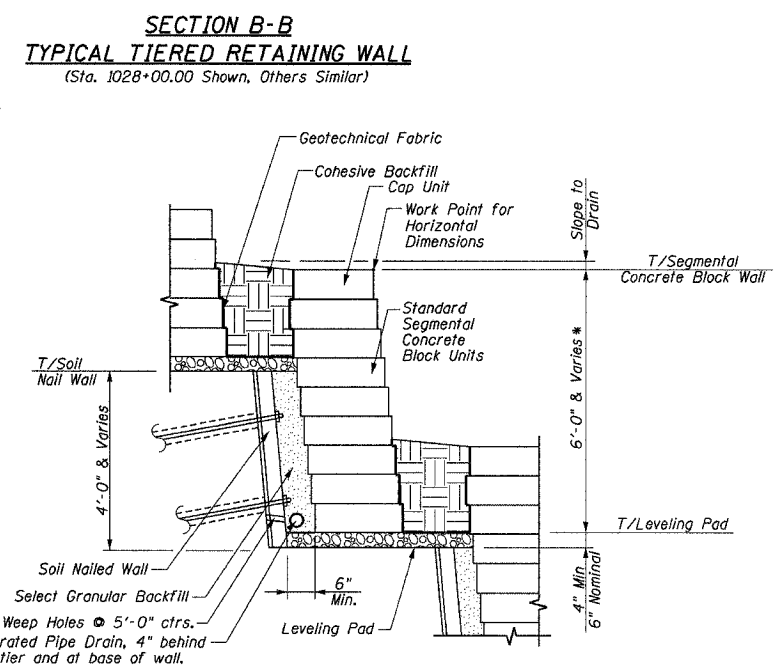


- LEGEND**
- Denotes Top of Wall Work Point.
 - Denotes Btm of Wall Work Point
 - See Sheet 6 for Wall Elevations.
 - Area where height of Segmental Concrete Block Wall exceeds height of Soil Nailed Wall. See Section C-C.
 - Denotes Tier No.

SEGMENTAL CONCRETE BLOCK WALL ELEVATION

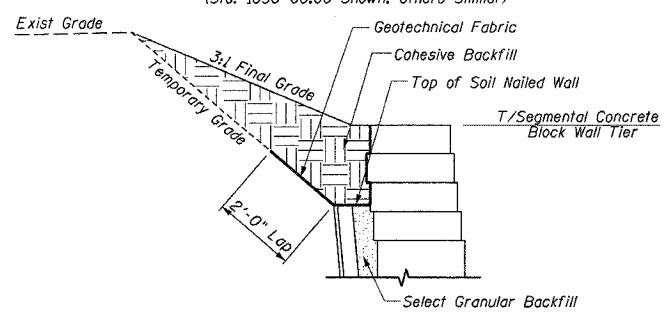


SECTION C-C TYPICAL TIERED RETAINING WALL
(Sta. 1030+00.00 Shown, Others Similar)



DETAIL 4
Typical Segmental Concrete Block Wall Tier

* Note: Block size, batter, setback & no. of courses per Wall Supplier Design (See Special Provision)



DETAIL 5

SEGMENTAL CONCRETE BLOCK WALL
ILLINOIS ROUTE 32/33
F.A.P. ROUTE 774
SECTION 107 WRS-1, 107BY,
107BY-1 & 107B-2
EFFINGHAM COUNTY
RETAINING WALL
STA. 1026+03.00 LT. TO STA. 1033+86.00 LT.
STRUCTURE NUMBER 025-W008