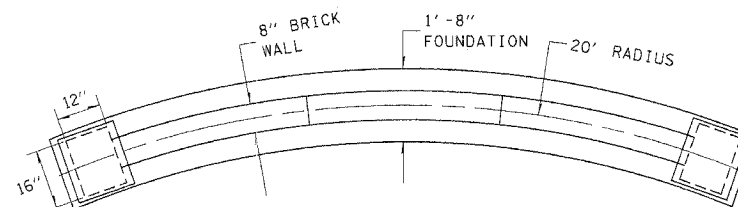
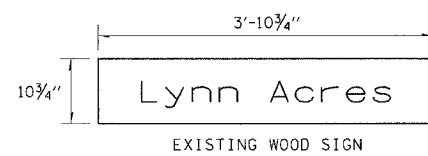
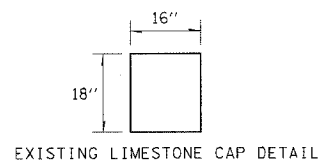
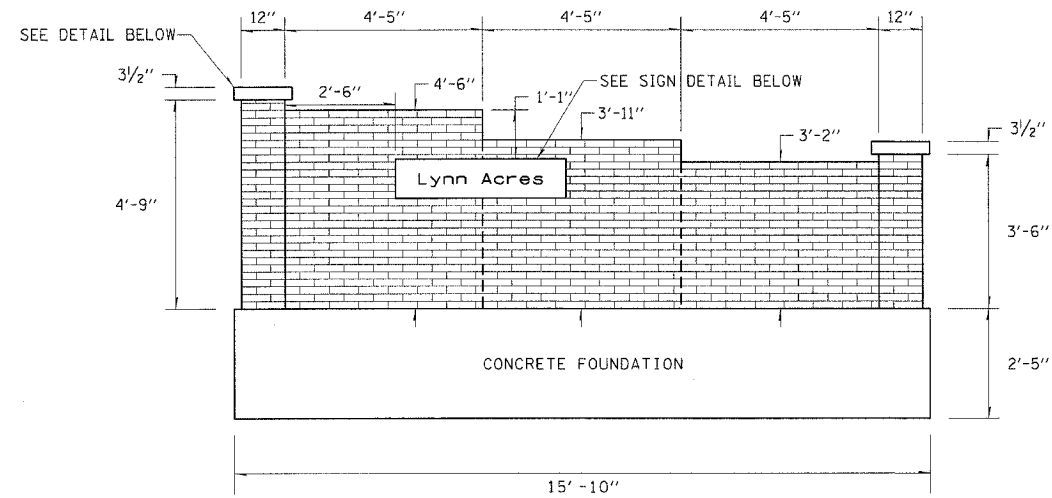
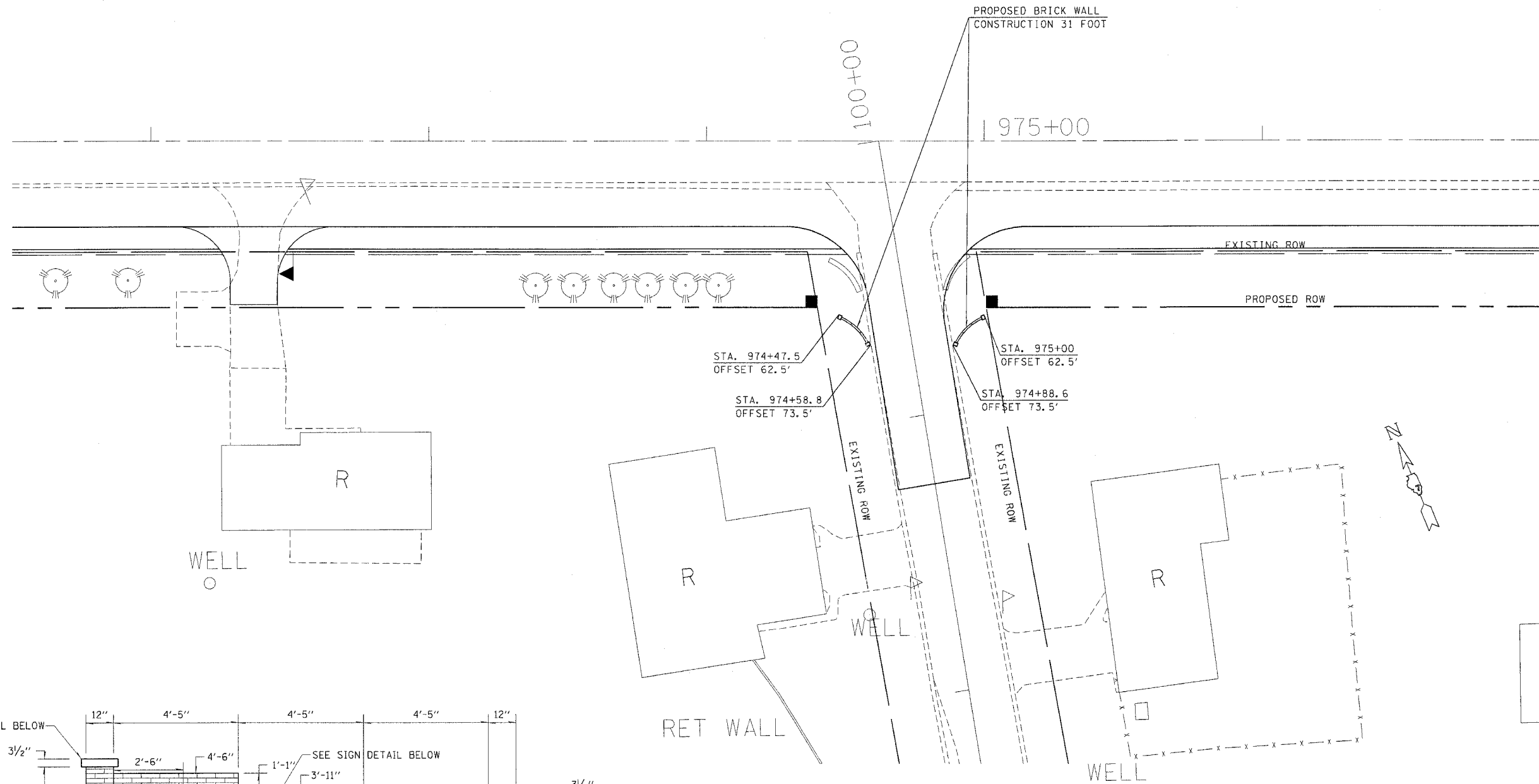


MKS  
8/25/04  
\\94827d\0120\pb.dgn  
BED

ITE.	SECTION	COUNTY	TOTAL SHEETS	SHEET NO.
774	.	EFFINGHAM	344	124J
FED. ROAD DIST. NO. 7		FED. AID PROJECT NO.		

CONTRACT NO. 94827  
• 107WRS-4,107BY,107BY-1 & 107B-2



NOTES:

1. REMOVE "LYNN ACRES" SIGN AND LIMESTONE COLUMN CAPS AS SHOWN ON THE PLANS AND SAVE FOR REUSE.
2. REMOVE EXISTING BRICK WALL ENTRANCE AND CONCRETE FOUNDATION.
3. CONSTRUCT THE PROPOSED CONCRETE FOUNDATION FLUSH WITH THE GROUND AT PROPOSED LOCATION AS SHOWN ON THE PLANS.
4. CONSTRUCT THE BRICK WALL ENTRANCE AS DETAILED IN THE PLANS. MATCH THE EXISTING BRICK COLOR AND RADIUS OF BRICK ENTRANCE DETAIL.
5. ATTACHED "LYNN ACRES" SIGN AND REPLACE THE LIMESTONE COLUMN CAPS.

REVISIONS	
NAME	DATE

ILLINOIS DEPARTMENT OF TRANSPORTATION

**BRICK ENTRANCE  
DETAIL**

SCALE: VERT.  
HORIZ.  
DATE

DRAWN BY  
CHECKED BY