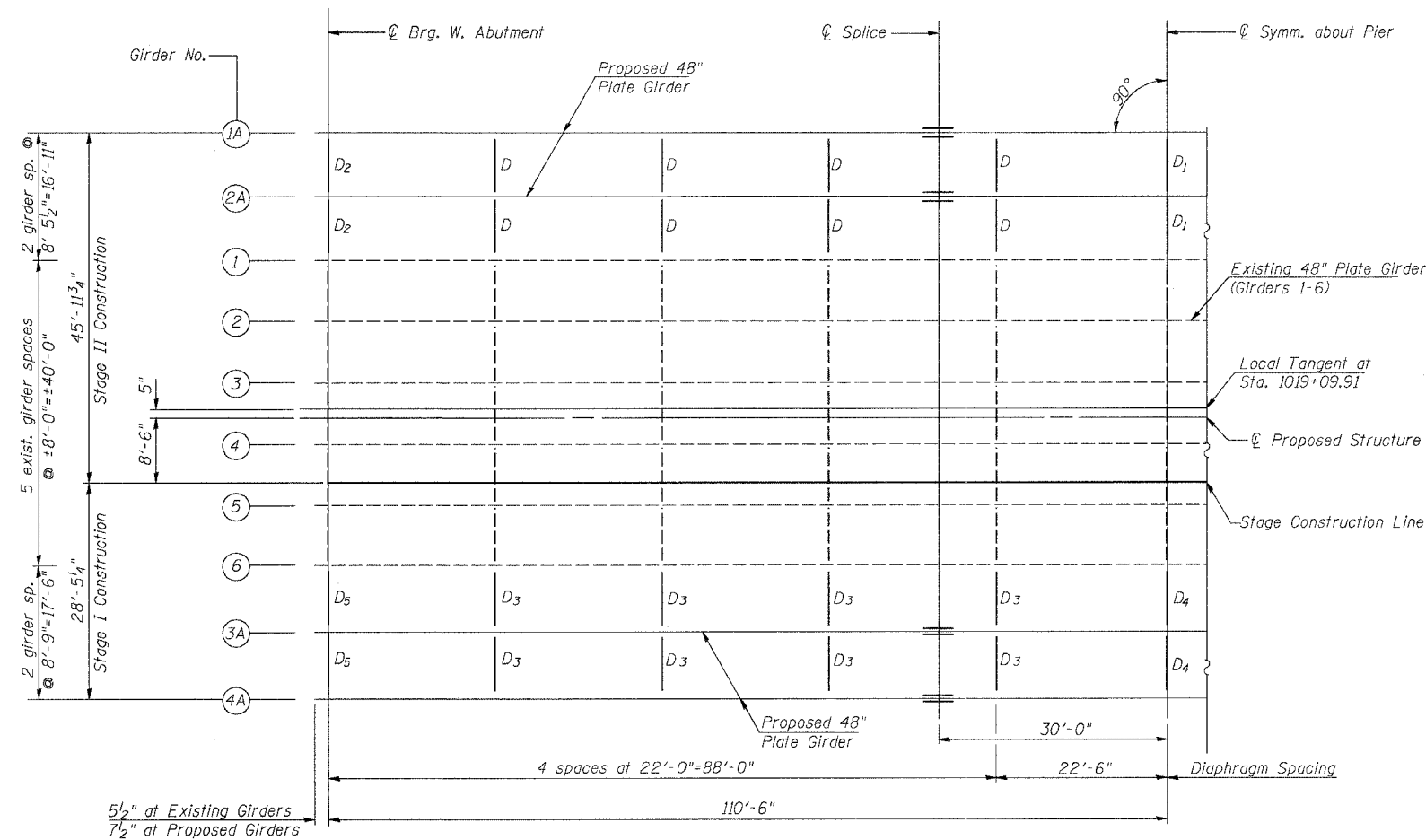
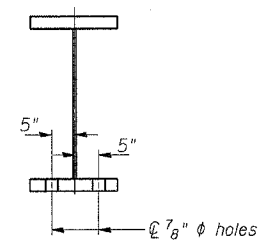


ROUTE NO.	SECTION	COUNTY	TOTAL SHEETS	SHEET NO.	SHEET NO. 12 26 SHEETS
F.A.P. RTE. 774	107BY-1	EFFINGHAM	344	278	
FED. ROAD DIST. NO. 7 ILLINOIS FED. AID PROJECT-					
CONTRACT NO. 94827					



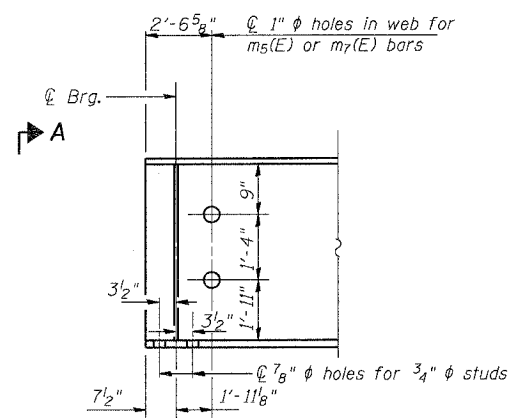
**FRAMING PLAN**



**VIEW A-A**

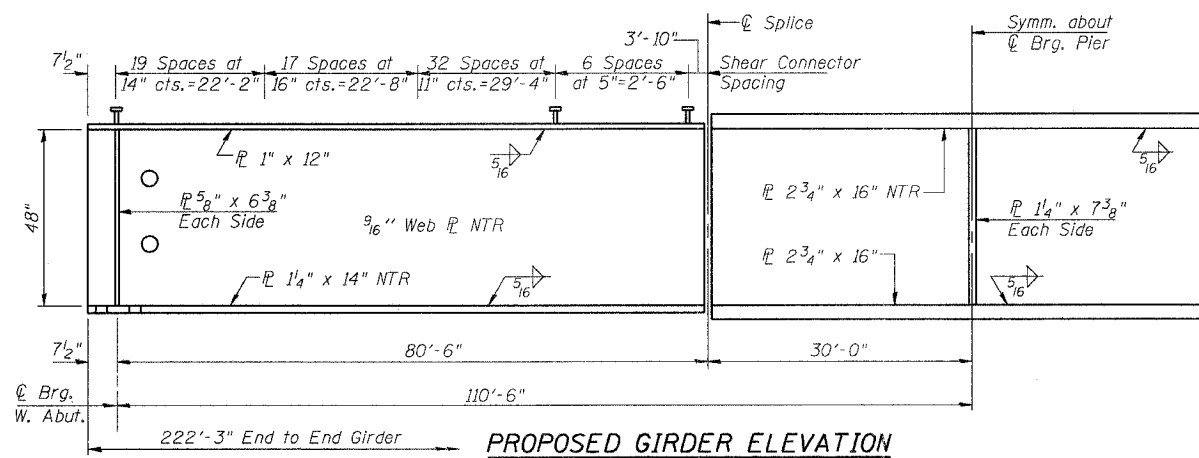
**NOTE**

Existing diaphragms along  $\bar{C}$  bearing at Abutments shall be cleaned and left in place. Cost of cleaning is included with Concrete Superstructure.



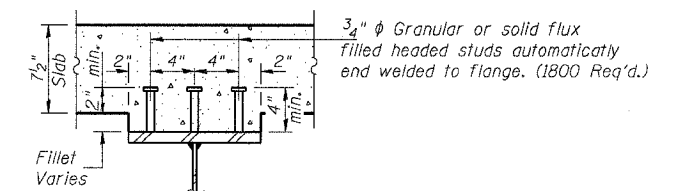
**DETAIL AT ABUTMENT**

Showing hole locations



**PROPOSED GIRDER ELEVATION**

"NTR" denotes plates to which notch toughness requirements are applicable.



**SHEAR STUD DETAIL**

Work this Sheet with Sheet 13 of 26.

SHEET TITLE		STRUCTURAL STEEL	
PROJECT	IL RTE. 32/33 OVER LITTLE WABASH RIVER OVERFLOW F.A.P. RTE. 774 SECTION 107BY-1 EFFINGHAM COUNTY STATION 1018+86.92 STRUCTURE NO. 025-0077	PROJECT NO.	02017
SCALE		DATE	
DRAWN BY	TFG	CHECKED BY	KPS/CME/MCB
DRAWING NO.			
<b>COOMBE-BLOXDORF P.C.</b> Engineers/Land Surveyors Springfield, Illinois Design Firm License No. 184-002708		12	OF 26 SHTS