

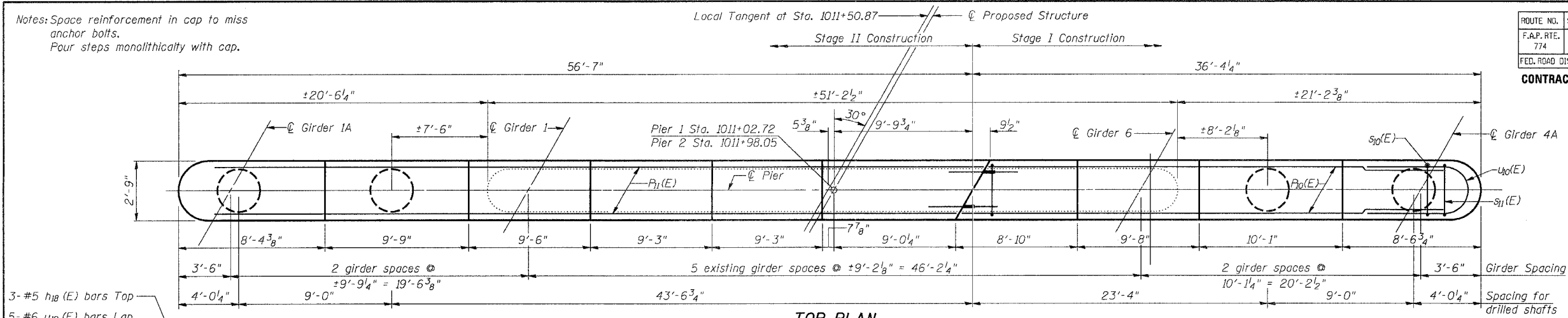
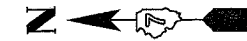
Notes: Space reinforcement in cap to miss anchor bolts.
Pour steps monolithically with cap.

Local Tangent at Sta. 1011+50.87

Stage II Construction Stage I Construction

ROUTE NO.	SECTION	COUNTY	TOTAL SHEETS	SHEET NO.	SHEET NO. 24 29 SHEETS
F.A.P. RTE. 774	107BY	EFFINGHAM	344	316	
FED. ROAD DIST. NO. 7 ILLINOIS FED. AID PROJECT-					

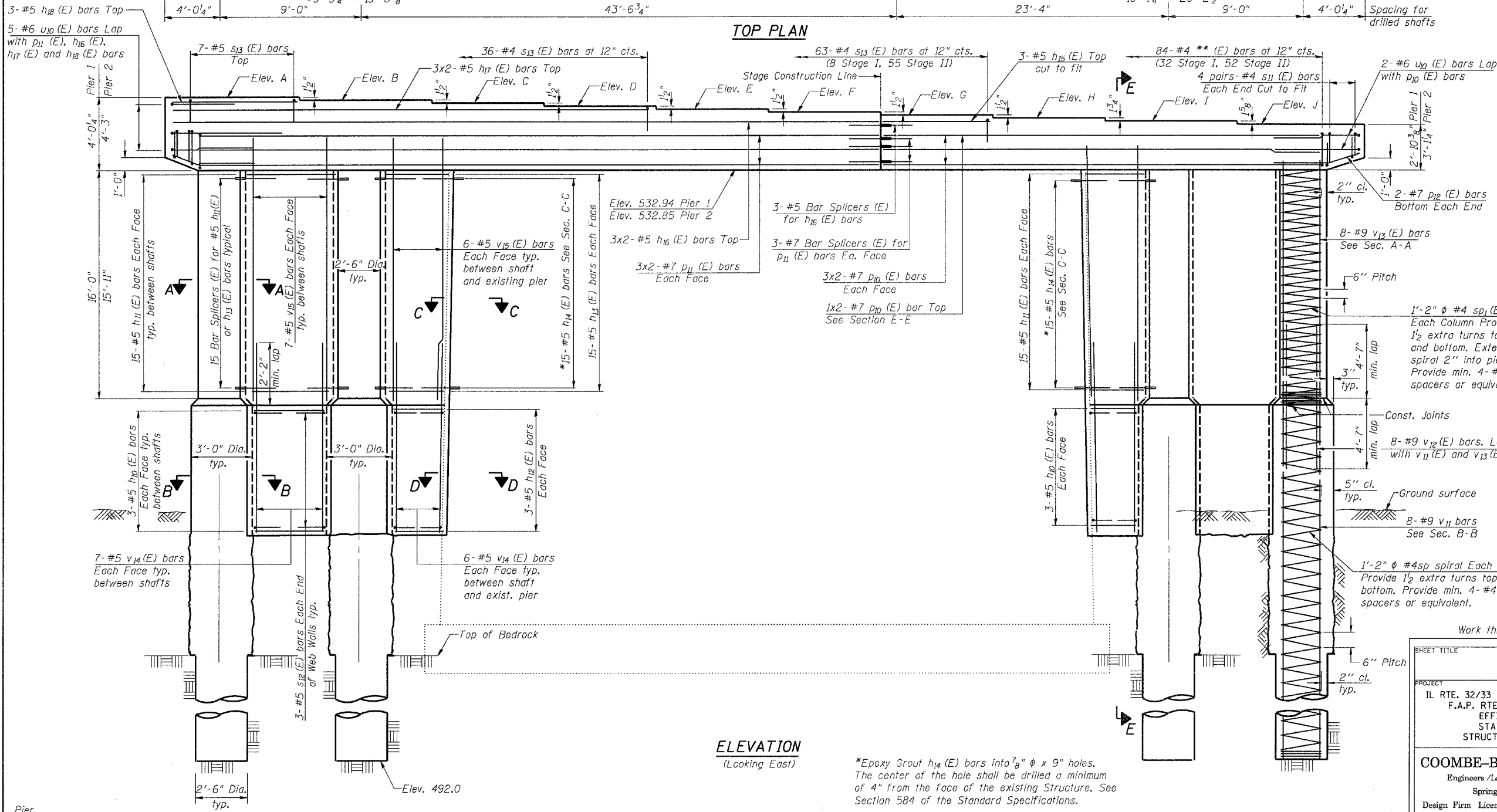
CONTRACT NO. 94827



TOP PLAN

TABLE of ELEVATIONS

Elev.	Pier 1	Pier 2
A	536.96	537.10
B	536.83	536.97
C	536.71	536.85
D	536.58	536.73
E	536.46	536.60
F	536.34	536.48
G	536.21	536.36
H	536.09	536.23
I	535.93	536.08
J	535.80	535.95



ELEVATION
(Looking East)

*Epoxy Grout h14 (E) bars into 7/8" ϕ x 9" holes. The center of the hole shall be drilled a minimum of 4" from the face of the existing Structure. See Section 584 of the Standard Specifications.

Min. Bar Lap

- #5 bar = 1'-8" web wall
- #5 bar = 3'-0" cap
- #7 bar = 4'-10"

Work this Sheet with Sheet 25 of 29.

SHEET TITLE		PIERS	
PROJECT	IL RTE. 32/33 OVER LITTLE WABASH RIVER	PROJECT NO.	02017
F.A.P. RTE.	774 SECTION 107BY	SCALE	
COUNTY	EFFINGHAM COUNTY	DATE	
STATION	1011+50.17	DRAWN BY	TFG
STRUCTURE NO.	025-0078	CHECKED BY	GJB/MCB
COOMBE-BLOXDORF P.C.		24	
Engineers/Land Surveyors		OF 29 SHTS	
Springfield, Illinois			
Design Firm License No. 184-002703			

DATE: 5/15/2007

SCALE: 1/4" = 1'-0"