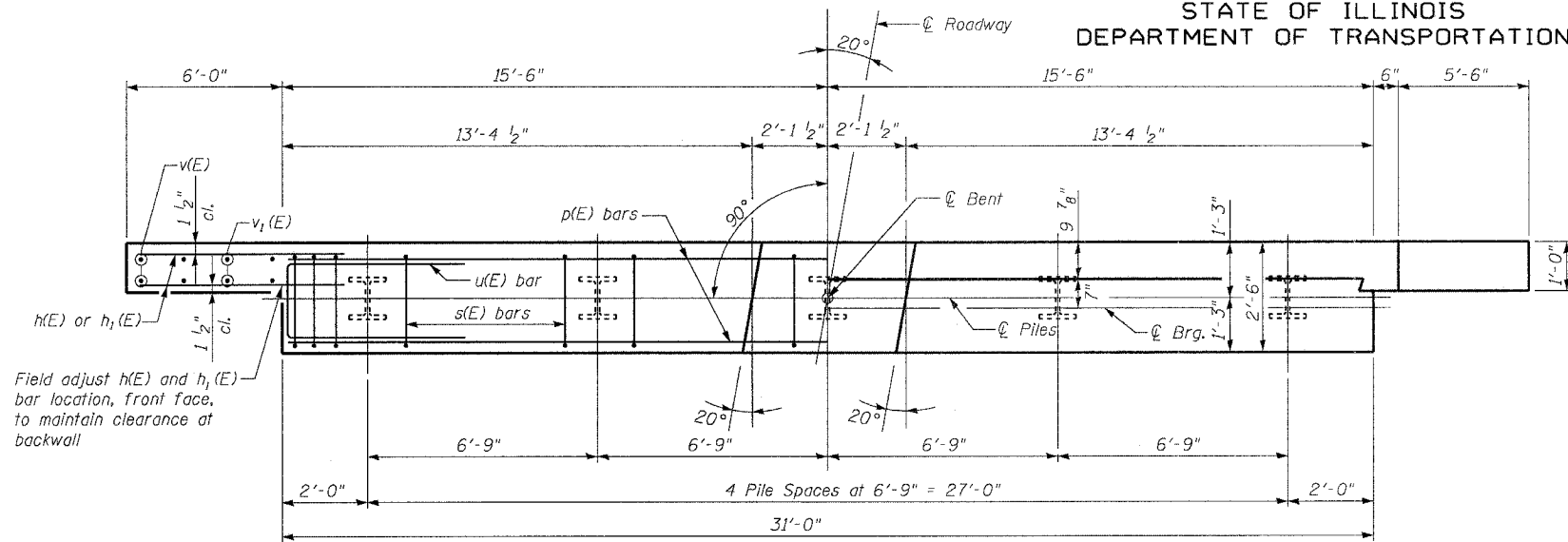


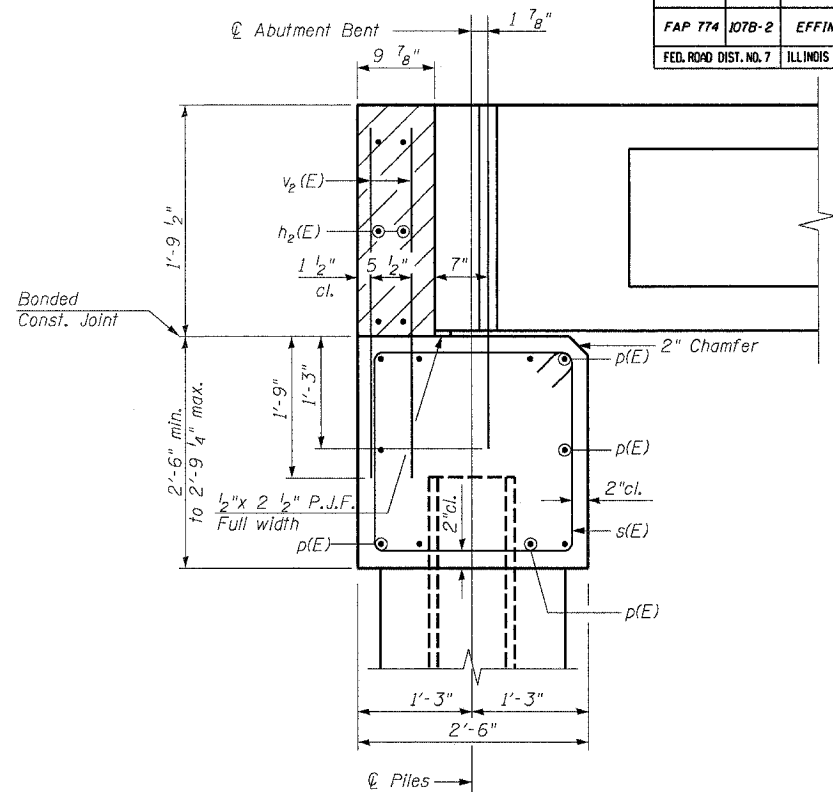
STATE OF ILLINOIS  
DEPARTMENT OF TRANSPORTATION

ROUTE NO.	SECTION	COUNTY	SHEETS	"SET"	SHEET NO. 5
FAP 774	107B-2	EFFINGHAM	344	326	8 SHEETS
FED. ROAD DIST. NO. 7	ILLINOIS FED. AID PROJECT-				

CONTRACT NO. 94827

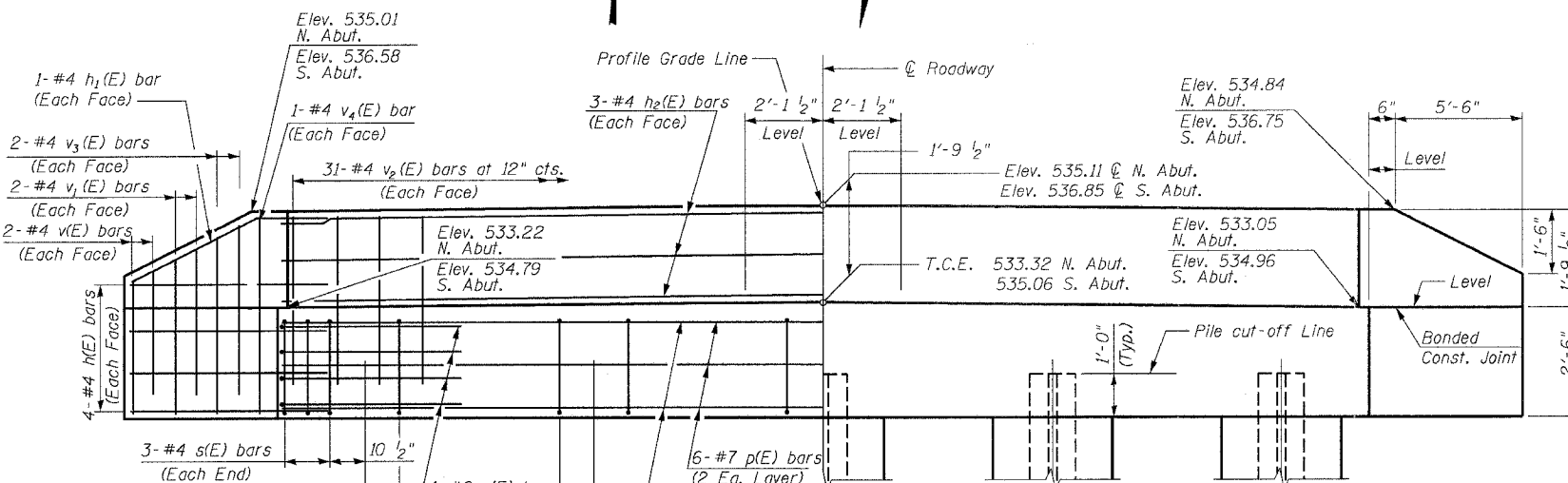


PLAN



SECTION THRU ABUTMENT

(At Right Angles)



ELEVATION

(North Abutment Looking North)  
(South Abutment Looking South)  
T.C.E. = Top of Cap Elevation

NOTES

1. The Backwall and the portion of the Wingwalls above the bonded construction joint shall be cast against the in-place beam.
2. Reinforcement bars shall conform to AASHTO M 31, M 42 or M 53, Grade 60.
3. Reinforcement bars designated (E) shall be epoxy coated.
4. Hatched area to be poured after beam is placed.

BAR s(E)

BAR u(E)

BAR h1(E)

BILL OF MATERIAL FOR ONE ABUTMENT

Bar	No.	Size	Length	Shape
h(E)	16	#4	8'-0"	—
h1(E)	4	#4	7'-7"	—
h2(E)	6	#4	30'-8"	—
p(E)	10	#7	30'-8"	—
s(E)	30	#4	9'-5"	□
u(E)	8	#6	11'-1"	—
v(E)	8	#4	2'-7"	—
v1(E)	8	#4	3'-0"	—
v2(E)	62	#4	3'-5"	—
v3(E)	8	#4	3'-6"	—
v4(E)	4	#4	4'-0"	—
Concrete Structures		Cu. Yd.	11.0	
Reinforcement Bars, Epoxy Coated		Pound	1381	
Furnishing Steel Piles HP12x53		Foot	153	
Driving Steel Piles		Foot	153	
*Test Pile Steel HP12x53		Each	1	
Concrete Encasement		Cu. Yd.	1.75	
Structure Excavation		Cu. Yd.	35.5	
Porous Granular Embankment		Cu. Yd.	26.5	

\*At North Abutment only

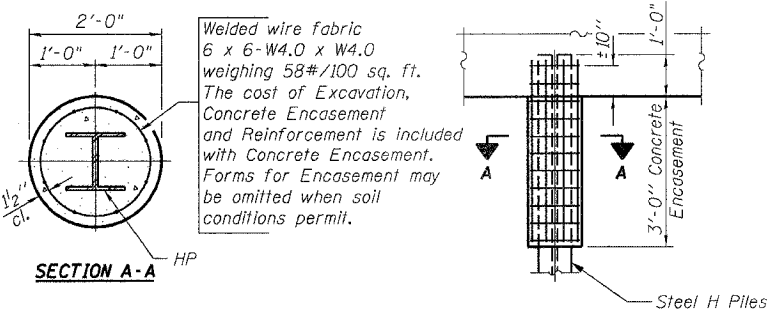
PILE DATA (2-ABUTMENTS)

Type HP12x53  
Capacity Driven to Refusal\*  
Estimated Length 34 Feet  
Number Required 9  
Test Pile 1 In North Abutment  
\*Allows for 7 Tons of negative skin friction

DESIGN STRESSES

$f'_c = 3,500 \text{ psi}$   
 $f_y = 60,000 \text{ psi}$

DESIGNED	TMM
CHECKED	KCM
DRAWN	CAR
CHECKED	TMM



PILE ENCASEMENT DETAIL AT ABUTMENT

PLANS/306-3305-001 04/26/04 09:41:20 AM