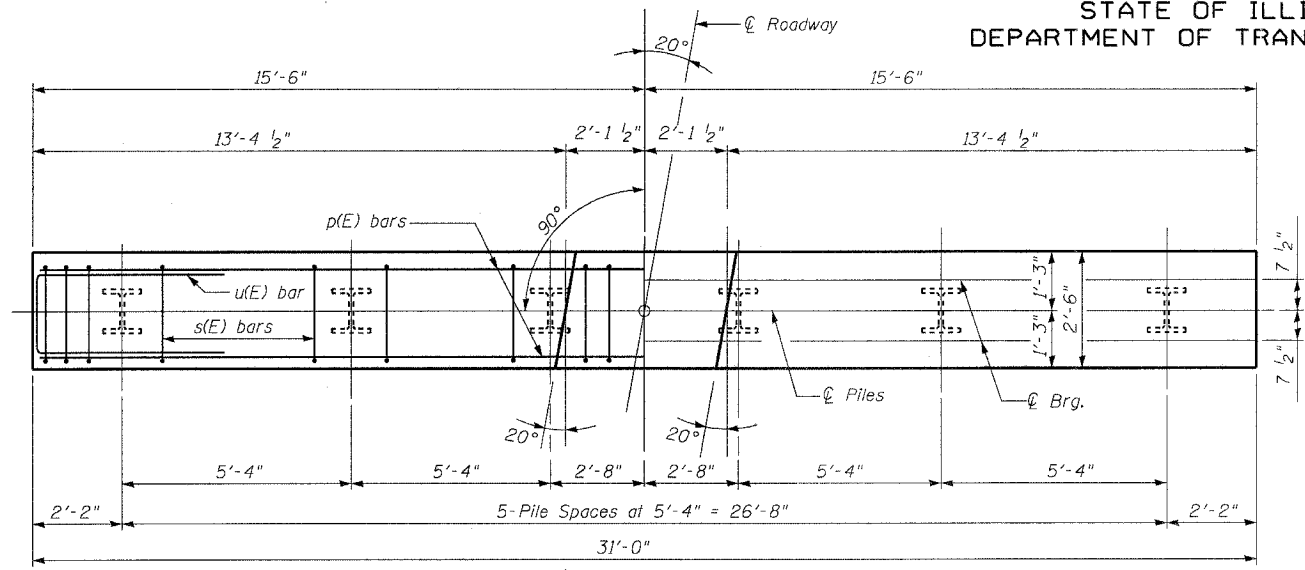


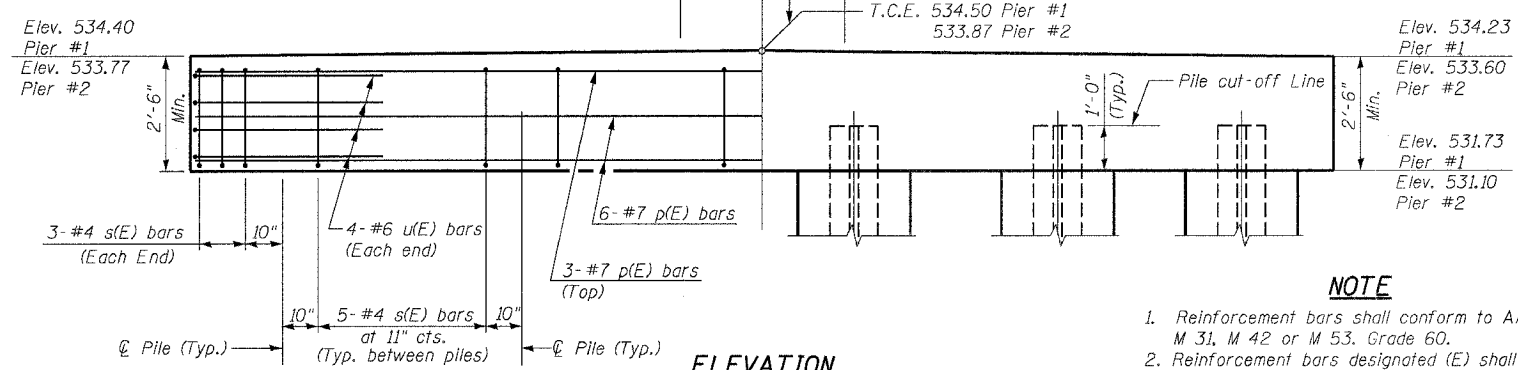
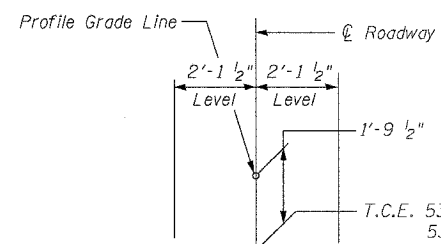
STATE OF ILLINOIS
DEPARTMENT OF TRANSPORTATION

ROUTE NO.	SECTION	COUNTY	SHEETS	"SET"	SHEET NO. 6
FAP 774	107B-2	EFFINGHAM	344	327	8 SHEETS
FED. ROAD DIST. NO. 7		ILLINOIS		FED. AID PROJECT-	

CONTRACT NO. 94827



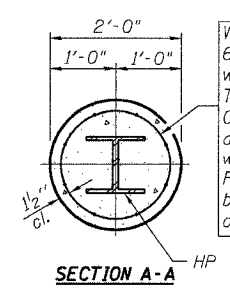
PLAN



ELEVATION
(Pier #1 Looking North)
(Pier #2 Looking North)
T.C.E. = Top of Cap Elevation

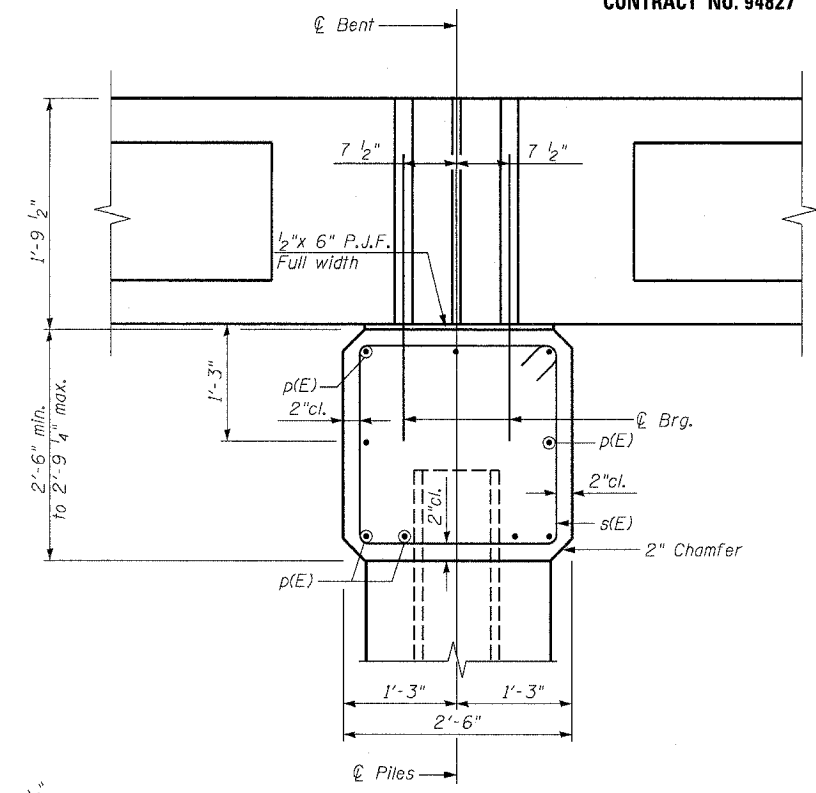
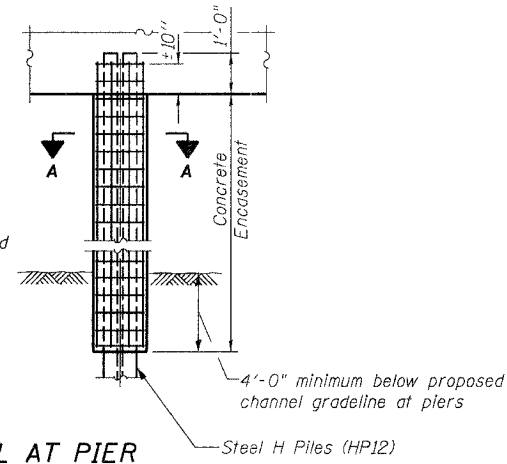
NOTE

1. Reinforcement bars shall conform to AASHTO M 31, M 42 or M 53, Grade 60.
2. Reinforcement bars designated (E) shall be epoxy coated.

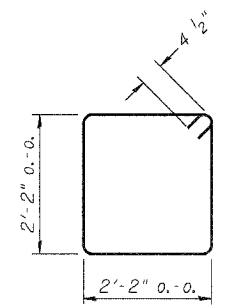


SECTION A-A

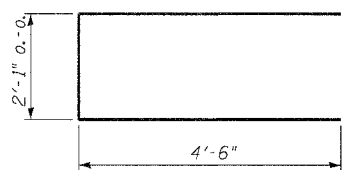
PILE ENCASEMENT DETAIL AT PIER



SECTION THRU PIER
(At Right Angles)



BAR s(E)



BAR u(E)

BILL OF MATERIAL
FOR ONE PIER

Bar	No.	Size	Length	Shape	
p(E)	9	#7	30'-8"	—	
s(E)	31	#4	9'-5"	□	
u(E)	8	#6	11'-1"	—	
Concrete Structures				Cu. Yd.	7.7
Reinforcement Bars, Epoxy Coated				Pound	892
Furnishing Steel Piles HP12x53				Foot	187
Driving Steel Piles				Foot	187
*Test Pile Steel HP12x53				Each	1
Concrete Encasement				Cu. Yd.	13.95
Underwater Structure Excavation Protection Location 1				Each	1
Underwater Structure Excavation Protection Location 2				Each	1

*At Pier #1 only

PILE DATA (2-PIERS)

Type	HP12x53
Capacity	Driven to Refusal
Estimated Length	34 Feet
Number Required	11
Test Pile	1 In Pier #1

PILE BENT PIER
1200th STREET OVER GREEN CREEK
FAP RTE. 774, SECTION 107B-2
EFFINGHAM COUNTY
STATION 204+33.91
S.N. 025-3309

DESIGNED	TMM
CHECKED	KCM
DRAWN	CAR
CHECKED	TMM