

T 8 N-R 6 E 3rd P.M. DOUGLAS TWP

F.A.P. RTE.	SECTION	COUNTY	TOTAL SHEETS	SHEET NO.
774		EFFINGHAM	344	342

SHEET NO. 13
15 SHEETS

EXIST. CURVE C61
PI STA. = 298+51.49
Δ = 40° 00' 00" (RT)
D = 114° 35' 30"
R = 50.00'
T = 18.20'
L = 34.91'
E = 3.21'
e = N/C
P.C. STA. = 298+33.29
P.T. STA. = 298+68.20

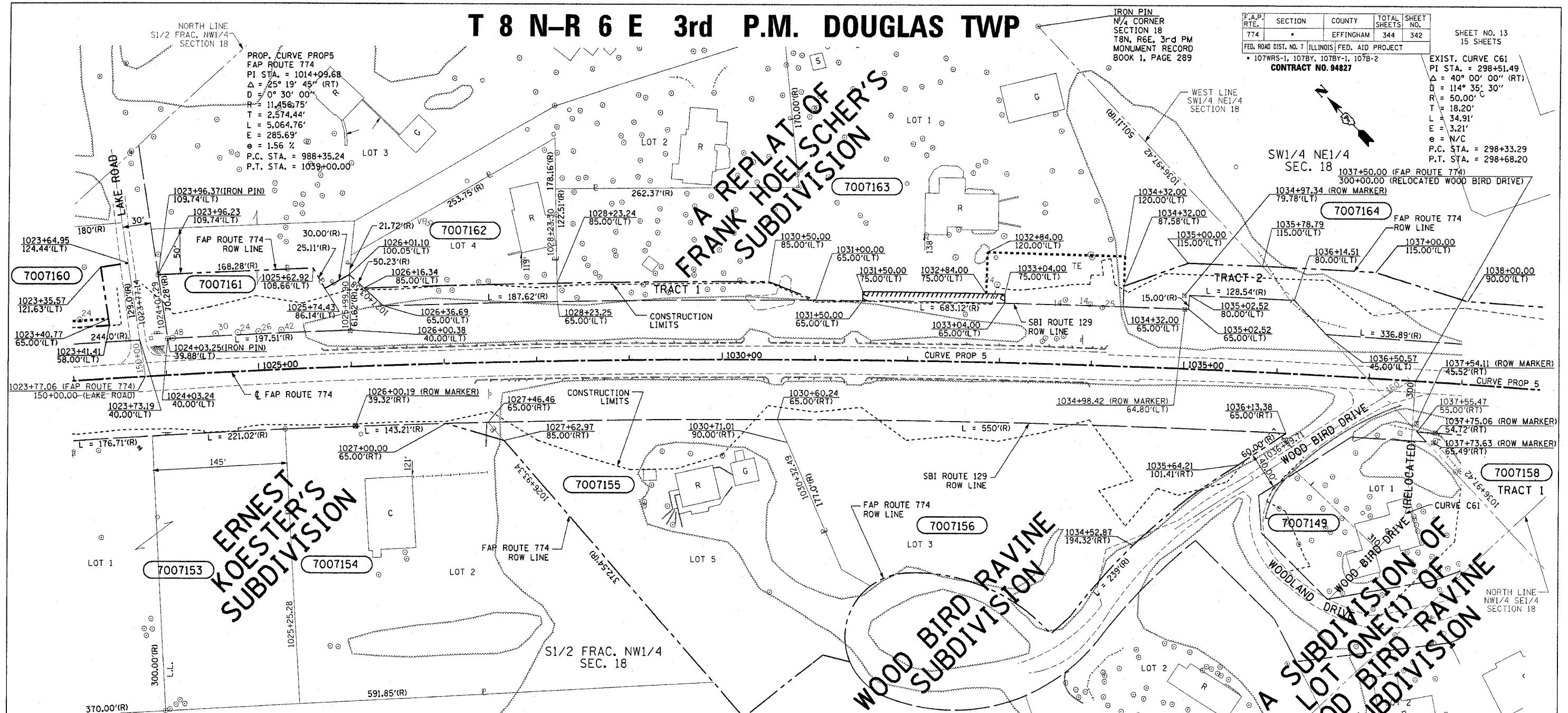
CONTRACT NO. 94827

A REPLAT OF
FRANK HOELSCHER'S
SUBDIVISION

ERNEST
KOESTER'S
SUBDIVISION

WOOD BIRD RAVINE
SUBDIVISION

A SUBDIVISION OF
LOT ONE (C) OF
WOOD BIRD RAVINE
SUBDIVISION



UTILITIES:

TELEPHONE- ILLINOIS CONSOLIDATED TELEPHONE COMPANY
VERIZON NORTH INC.

GAS- AMEREN CIPS

ELECTRICITY- NORRIS ELECTRIC COOPERATIVE
AMEREN CIPS

WATER- E J WATER CORPORATION
LAKE SARA AREA WATER COOPERATIVE, INC.
CITY OF EFFINGHAM

SEWER- CITY OF EFFINGHAM

T.V. CABLE- AT & T MEDIA SERVICE

PARCEL	OWNER	ADD AREA TAKEN	EXIST. AREA	EASEMENT	REM. AREA	INST	MICRO FILM NO RECORDED	DATE	BOOK	PAGE	AREA	SOLD EXCESS
7007149	WILFORD MILLER ET AL		33,443		0							
7007153	CROSSROADS FREE WILL BAPTIST CHURCH		3,051		1,192,491							
	TRACT 1		1,097		1,041,900							
	TRACT 2		1,954		150,591							
7007154	THOMAS L. NEASE		464		98,441							
7007155	TODD A. GARTNER		70,218		0							
7007156	DORRIS E. GARTNER		72,309		0							
7007160	PATRICK MAPES		6,570	2,736	20,329							
7007162	RICHARD J. HOELSCHER		3,961		21,449							
7007161	TIMOTHY H. LAUE		13,440		87,120							
7007163	FRANK HOELSCHER		11,047	9,530	150,419							
	TRACT 2		5,119		150,419							
	TRACT 3		5,928		150,419							
7007164	CENTRAL ILLINOIS PUBLIC SERVICE COMPANY		25,538		915,410							

CONTRACT NO. 94827

FIELD BOOK NO 449, 450, 451, 452 & 452B

(R) RECORDED DISTANCE

○ - IRON PIN
■ - ROW MARKER

NOTE: TEMPORARY EASEMENTS ARE NEEDED AS A WORK AREA.

NOTE: ALL AREAS ARE IN SQUARE FEET UNLESS OTHERWISE NOTED.

NOTE: BEARINGS ARE REFERENCED TO THE ILLINOIS STATE PLANE COORDINATE SYSTEM EAST ZONE DATUM OF 1983

STATION	OFFSET	LABEL
1024+03.25	39.88'(LT)	IRON PIN
1023+96.37	109.74'(LT)	IRON PIN

PROJECT	SECTION	107WRS-1 107BY, 107BY-1 107B-2
STATION	1023+00.00	TO
STATION	1038+00.00	
COUNTY	EFFINGHAM	
SCALE	1"=50'	

SHEET 13 OF 15

MKS
10/7/04
94827\plansheet13.d

DRAWN BY:
WRITTEN BY:
CHECKED BY:
INSPECTED BY:

JOB NO. R-97-007-00

BLANK, WESSELINK, COOK & ASSOCIATES

ENGINEERS - CONSULTANTS
DECATUR, ILLINOIS

F.A.P. 774 (IL RTE 32/33) SEC 107WRS-1, 107BY, 107BY-1 & 107B-2

EFFINGHAM COUNTY

Revised 10-21-04