

T 8 N-R 6 E 3rd P.M. DOUGLAS TWP

F.A.P. RTE.	SECTION	COUNTY	TOTAL SHEETS	SHEET NO.
774		EFFINGHAM	344	344

SHEET NO. 15
15 SHEETS

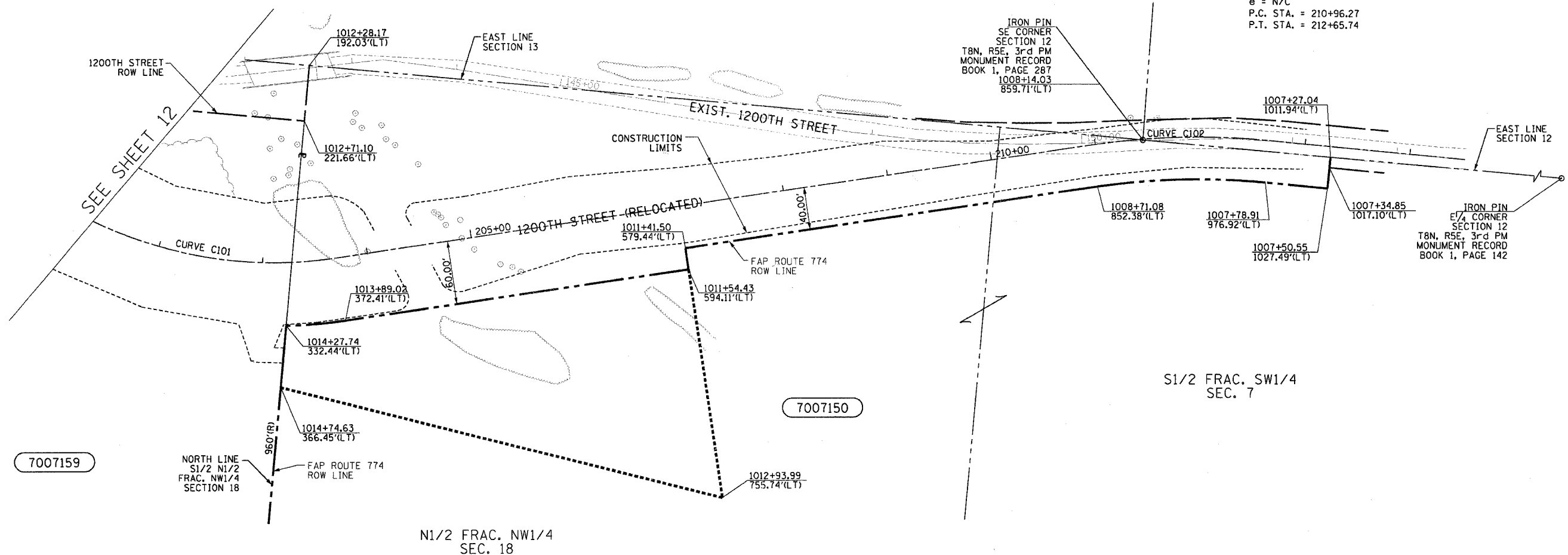
FED. ROAD DIST. NO. 7 ILLINOIS FED. AID PROJECT
* 107WRS-1, 107BY, 107BY-1, 107B-2
CONTRACT NO. 94827

PROP. CURVE C101
RELOCATED 1200TH STREET
PI STA. = 202+54.90 =
STA. 1014+39.51, 246.44'(LT)
FAP ROUTE 774
Δ = 34° 00' 01" (LT)
D = 14° 19' 26"
R = 400.00'
T = 122.29'
L = 237.37'
E = 18.28'
e = N/C
P.C. STA. = 201+32.60
P.T. STA. = 203+69.97

PROP. CURVE C102
RELOCATED 1200TH STREET
PI STA. = 211+81.42 =
STA. 1007+88.51, 888.39'(LT)
FAP ROUTE 774
Δ = 13° 52' 16" (RT)
D = 8° 11' 06"
R = 700.00'
T = 85.15'
L = 169.47'
E = 5.16'
e = N/C
P.C. STA. = 210+96.27
P.T. STA. = 212+65.74



1 2 3 4 5 6 7 8 9
10 11 12 13 14 15 16 17 18
19 20 21 22 23 24 25 26 27
28 29 30 31 32 33 34 35 36
37 38 39 40 41 42 43 44 45
46 47 48 49 50 51 52 53 54
55 56 57 58 59 60 61 62 63



S1/2 FRAC. SW1/4
SEC. 7

N1/2 FRAC. NW1/4
SEC. 18

LIST OF IRON PINS, PIPES OR MONUMENTS TO BE PROTECTED

STATION	OFFSET	LABEL
1008+14.03	859.71'(LT)	IRON PIN

FIELD BOOK NO 449, 450, 451,
452 & 452B
(R) RECORDED DISTANCE
⊙ - IRON PIN

NOTE: ALL AREAS ARE IN SQUARE FEET
UNLESS OTHERWISE NOTED.
NOTE: BEARINGS ARE REFERENCED TO THE
ILLINOIS STATE PLANE COORDINATE
SYSTEM EAST ZONE DATUM OF 1983

RIGHT OF WAY PLANS
FAP ROUTE 774

PROJECT	SECTION	107WRS-1 107BY, 107BY-1 107B-2
STATION	1007+27.04	
STATION	1015+27.37	
COUNTY	EFFINGHAM	
SCALE	1"=50'	
SHEET 15 OF 15		

UTILITIES:

TELEPHONE-	ILLINOIS CONSOLIDATED TELEPHONE COMPANY VERIZON NORTH INC.
GAS-	AMEREN CIPS
ELECTRICITY-	NORRIS ELECTRIC COOPERATIVE AMEREN CIPS
WATER-	E J WATER COORORATION LAKE SARA AREA WATER COOPERATIVE, INC. CITY OF EFFINGHAM
SEWER-	CITY OF EFFINGHAM
T.V. CABLE-	AT & T MEDIA SERVICE

PARCEL	OWNER	ADD AREA TAKEN	EXIST. AREA	EASEMENT	REM. AREA	INST	MICRO FILM NO RECORDED	DATE	BOOK	PAGE	AREA	SOLD EXCESS
7007159	STEPHEN KOESTER, AS SUCCESSOR TRUSTEE	380,222			0							
7007150	IOLENE KOESTER	101,062	19,495	54,344	2,309,438							

DRAWN BY: NJV
WRITTEN BY: TLS
CHECKED BY: BKB
INSPECTED BY: RMD

JOB NO. R-97-007-00