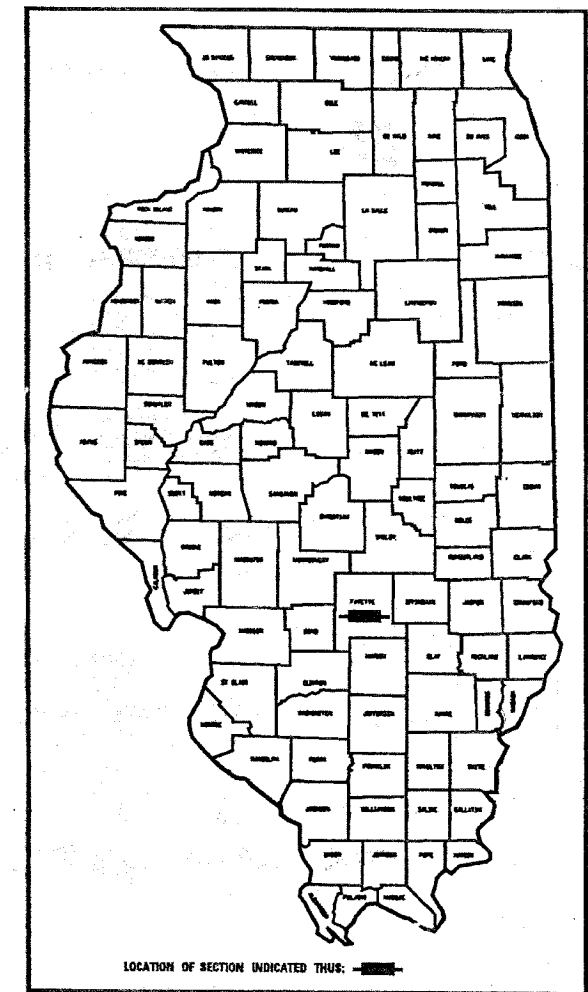


94941

FAP NO.	SECTION	COUNTY	TOTAL SHEETS	SHEET NO.
752	(106-22)TS	FAYETTE	24	1

D-97-009-02

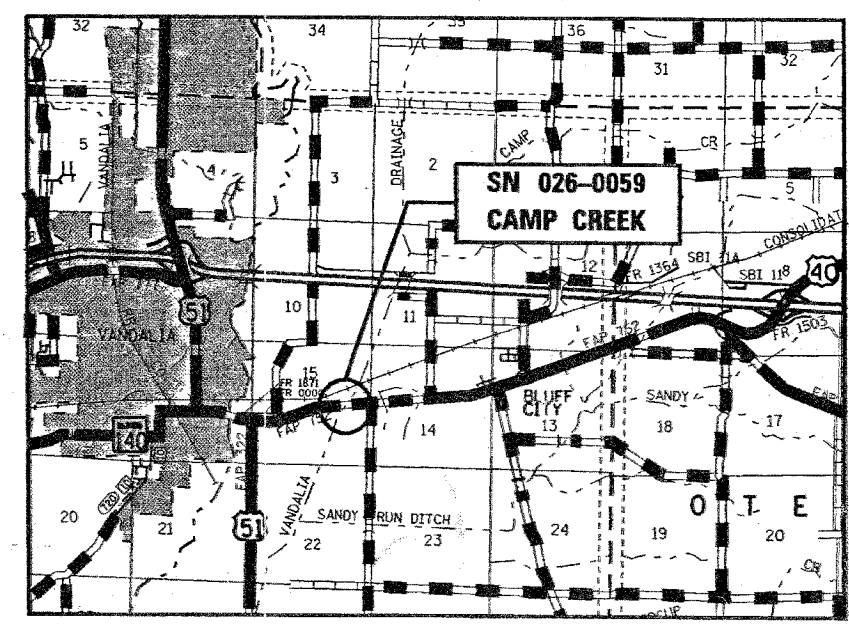


LOCATION OF SECTION INDICATED THUS: [Symbol]

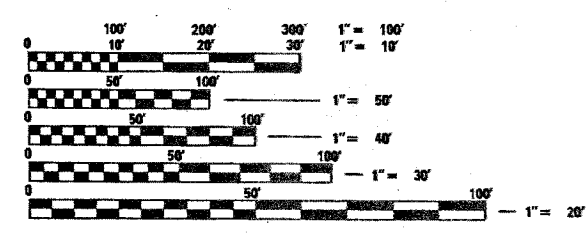
STATE OF ILLINOIS
 DEPARTMENT OF TRANSPORTATION
 DIVISION OF HIGHWAYS
**PLANS FOR PROPOSED
 FEDERAL HIGHWAY PROJECT**

FAP ROUTE 752 (US 40)
 SECTION (U-2BR-1)BR
 FAYETTE COUNTY

C-97-032-02



LOCATION MAP



FULL SIZE PLANS HAVE BEEN PREPARED USING STANDARD ENGINEERING SCALES, REDUCED SIZED PLANS WILL NOT CONFORM TO STANDARD SCALES, IN MAKING MEASUREMENTS ON REDUCED PLANS, THE ABOVE SCALES MAY BE USED.

J.U.L.I.E.
 JOINT UTILITY LOCATION INFORMATION FOR EXCAVATION
 1-800-892-0123

CONTRACT NO. 94941

TOWNSHIP : SALEM T2N R2E

ADT : 4427 (2006)

GROSS LENGTH = 369
 NET LENGTH = 369

FEET = .07 MILES
 FEET = .07 MILES

SEAL

PRINTED BY THE AUTHORITY OF
 THE STATE OF ILLINOIS

STATE OF ILLINOIS
 DEPARTMENT OF TRANSPORTATION
 DIVISION OF HIGHWAYS

SUBMITTED Dec. 21 20 04
Christ H. Reed
 DISTRICT ENGINEER

February 4, 20 05
Mike Naeff
 ENGINEER OF PROJECT DEVELOPMENT AND IMPLEMENTATION

February 4, 20 05
Victor Maden
 ENGINEER OF DESIGN AND ENVIRONMENT

 DIRECTOR, DIVISION OF HIGHWAYS

MKS 8/19/04
 \94941\d00902pa.dgn
 REV. 1
 1 2 3 4 5 6 7 8 9
 10 11 12 13 14 15 16 17 18
 19 20 21 22 23 24 25 26 27
 28 29 30 31 32 33 34 35 36
 37 38 39 40 41 42 43 44 45
 46 47 48 49 50 51 52 53 54
 55 56 57 58 59 60 61 62 63

PROJECT ENGINEER : TIMMIE ALLEN
 SQUAD LEADER :
 DESIGNER :
 TELEPHONE : 217/342-3951 EX 316