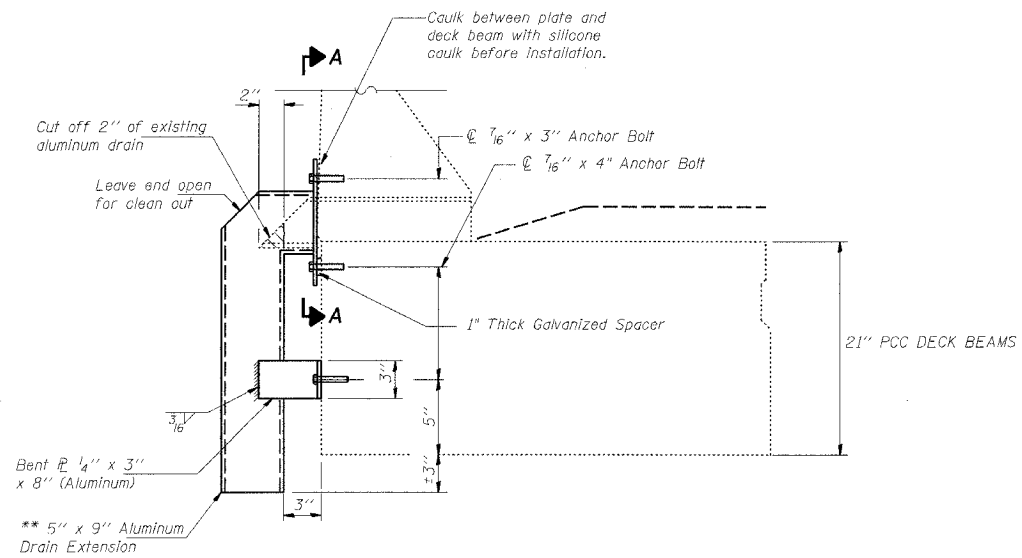


teasleyck
 teasleyck*+_DATE_
 c:\projects\94941d\d00902pa.dgn

FD

| FAP FILE | SECTION | COUNTY | TOTAL SHEETS | SHEET NO. |
|-----------------------|-----------|----------------------|--------------|-----------|
| 752 | (106-2)TS | FAYETTE | | 17 |
| FED. ROAD DIST. NO. 7 | ALIGNMENT | FED. AID PROJECT NO. | | |

CONTRACT NO. 94941

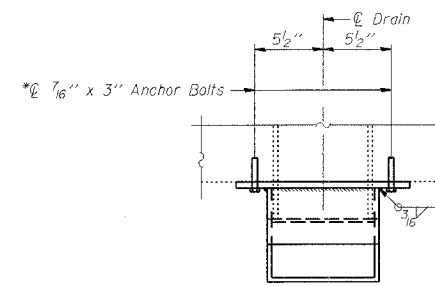


FLOOR DRAIN EXTENSION DETAIL

** 3/16" Aluminum Sheets (Welded)
 ASTM: B209 alloy 6061-T6.

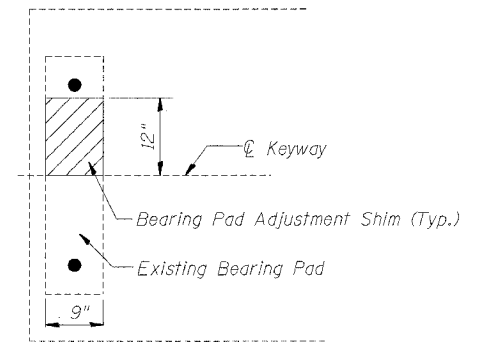
(24 REQUIRED)

SEE SHEET 10 OF 24 FOR
 LOCATIONS. NO EXTENSIONS
 REQUIRED IN SPAN 8.



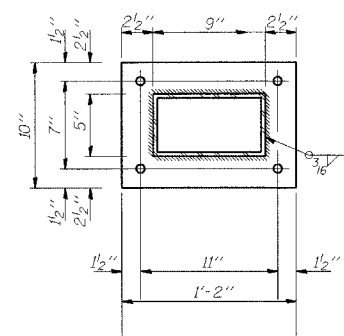
TOP PLAN

*Drill and grout, Grade 3 epoxy
 one hour minimum cure.



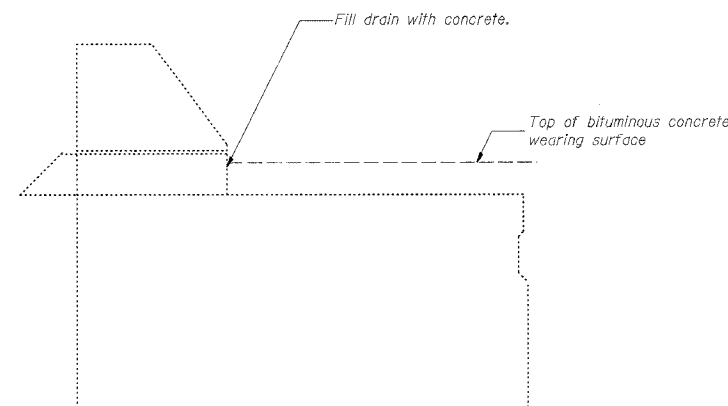
BEARING PAD ADJUSTMENT DETAIL

PLAN QUANTITY IS ESTIMATED.
 LOCATIONS TO BE DETERMINED IN
 THE FIELD. SEE SPECIAL PROVISIONS



SECTION A-A

1/4" x 10" x 1'-2" (Aluminum)

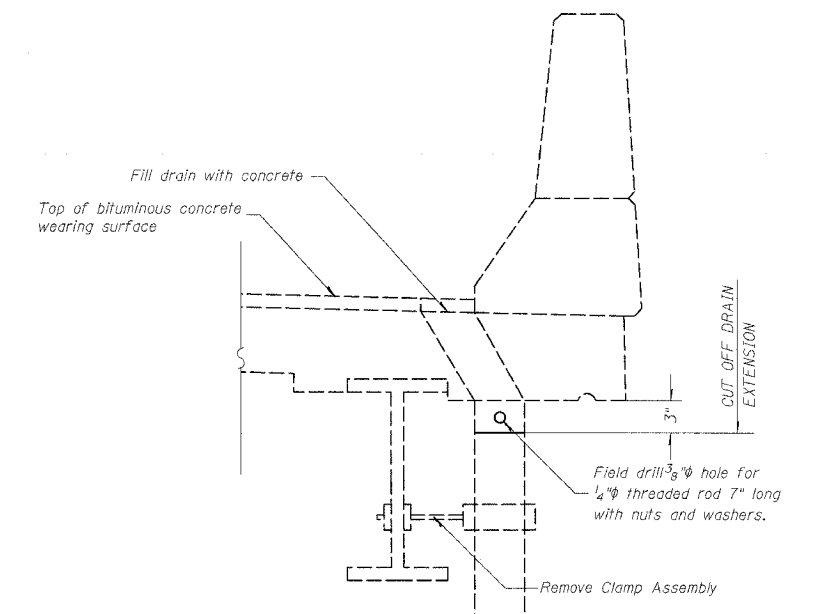


PLUG EXISTING DECK DRAIN

SPANS 1 THRU 6

(QUANTITY = 14 EACH)

SEE SHEET 10 OF 24 FOR
 LOCATIONS.



PLUG EXISTING DECK DRAIN

SPAN 7

(QUANTITY = 2 EACH)

SEE SHEET 11 OF 24 FOR
 LOCATIONS.

| REVISIONS | |
|-----------|------|
| NAME | DATE |
| | |
| | |
| | |
| | |
| | |
| | |
| | |
| | |
| | |
| | |

ILLINOIS DEPARTMENT OF TRANSPORTATION

**BEARING PAD ADJUSTMENT
 & FLOOR DRAIN EXTENSION/
 ELIMINATION DETAILS**

SCALE: VERT.
 HORIZ.
 DATE

DRAWN BY
 CHECKED BY